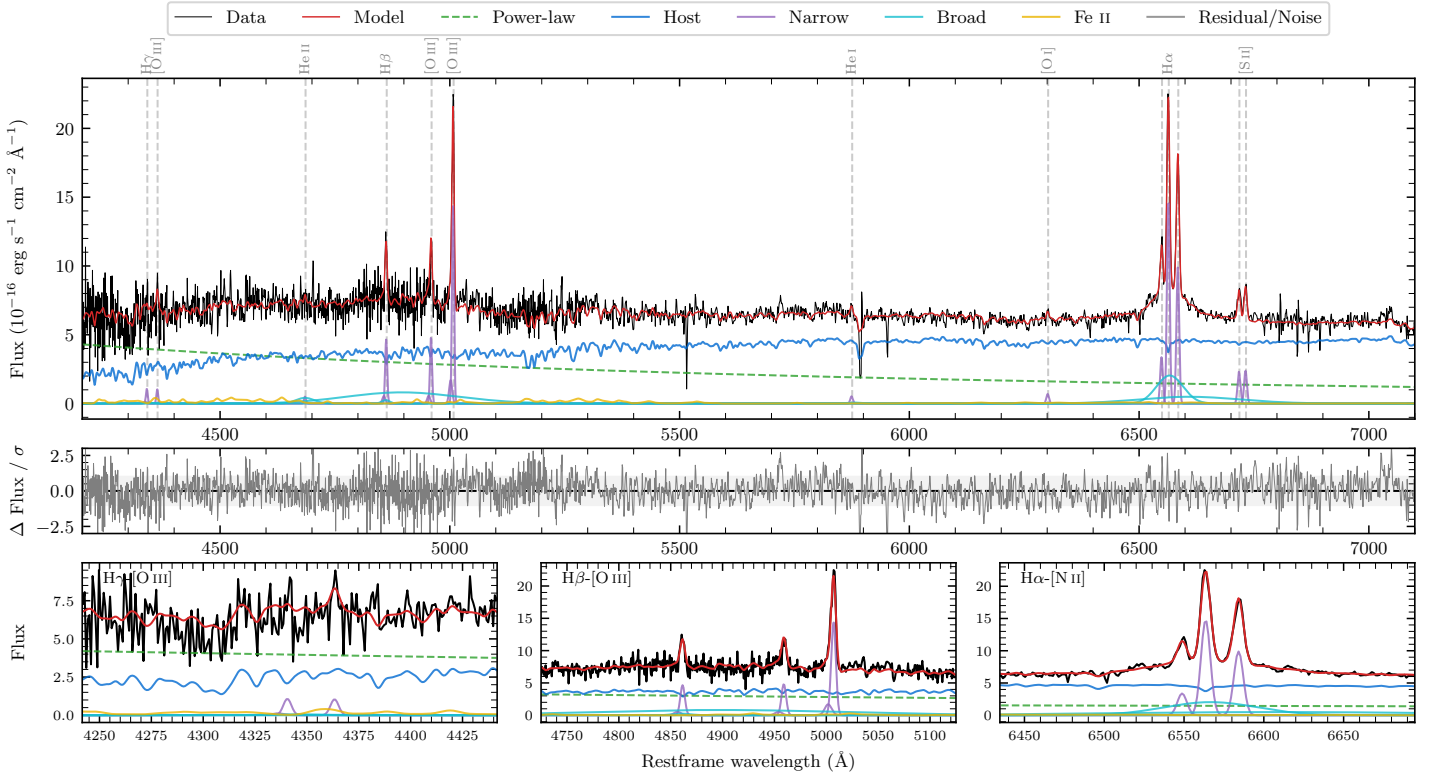
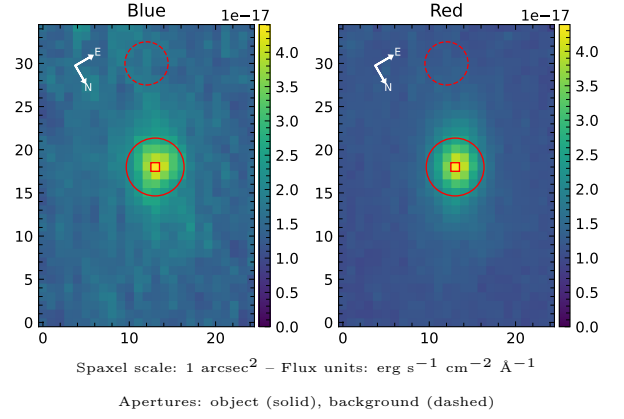


LEDA 3080556

Spectrum ID	22267460_sp1	Spectrum Type	Bad
Alt name	g0404473-034757	Quality Flag	bad_blue
z	0.0689	AGN reference	6dFGS
RA, Dec	61.1972, -3.7992	MW $E(B - V)$	0.081
MJD	60260.61	Power law α_ν	0.42 ± 0.07
SNR/Å B/R	8.7/15.7	$\log L_{5100, \text{AGN}}$	43.20 ± 0.03
Obs Airmass	1.13	$\log H\beta_{\text{Br}}/[O \text{ III}]$	—
SMSS ID	22267460	$\log M_{L5100}/M_\odot$	—
Closest SMSS	None < 15"	$\log M_{\text{H}\alpha}/M_\odot$	7.34 ± 0.04
SMSS Mean r_{psf}	16.4 ± 0.1	$\log M_{\text{H}\beta}/M_\odot$	—
2MASS K_{ext}	12.6 ± 0.1	$\log M_{[\text{O III}]} / M_\odot$	—



Emission Line Measurements

Line	$\log L$ (erg s $^{-1}$)	FWHM (km s $^{-1}$)	σ (km s $^{-1}$)	EW (Å)
H γ Narrow	39.89 ± 0.27	337 ± 63	181 ± 27	1.66 ± 0.67
Hγ Broad	—	—	—	—
[O III] 4364	39.81 ± 0.26	318 ± 63	135 ± 25	1.40 ± 0.57
He II Narrow	39.52 ± 0.38	318 ± 63	135 ± 25	0.87 ± 0.53
He II Broad	—	—	—	—
H β Narrow	40.57 ± 0.06	337 ± 63	181 ± 27	10.60 ± 0.75
Hβ Broad	—	—	—	—
[O III] 5007	41.07 ± 0.02	337 ± 63	181 ± 27	36.26 ± 0.82
He I Narrow	39.64 ± 0.23	318 ± 63	135 ± 25	1.96 ± 0.60
He I Broad	39.62 ± 0.44	1989 ± 63	845 ± 25	1.87 ± 1.69
[O I] 6300	39.79 ± 0.13	318 ± 63	135 ± 25	3.30 ± 0.62
H α Narrow	41.13 ± 0.01	318 ± 63	135 ± 25	80.17 ± 0.88
Hα Broad	41.55 ± 0.02	3594 ± 110	2367 ± 87	211.14 ± 5.38
[N II] 6585	40.96 ± 0.01	318 ± 63	135 ± 25	54.24 ± 0.81
[S II] 6718	40.34 ± 0.05	318 ± 63	135 ± 25	13.58 ± 0.91
[S II] 6732	40.35 ± 0.04	318 ± 63	135 ± 25	14.09 ± 0.90

Emission Summary

H α Broad SNR	3.24
H β Broad SNR	0.33
H γ Broad SNR	0.00
AGN frac	0.44
Host frac	0.56
$\log L_{5100, \text{Host}}$	43.31
Fe II/H β	—
Fe II/[O III]	—

Quality Flags

spurious_hab/hbb	0/1
15100	2
balmer	2
balmer_snr	2
hb_width	2
balmer_width	2