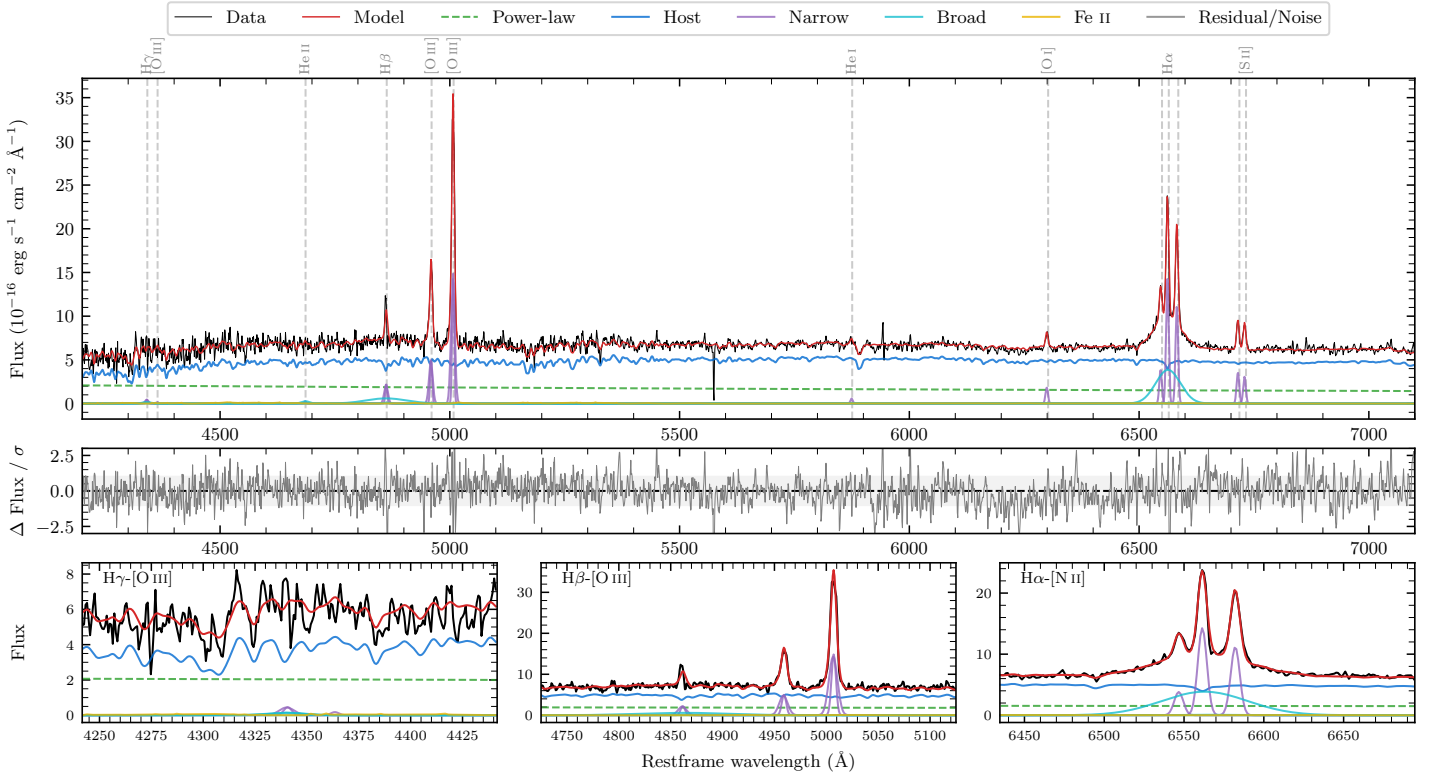
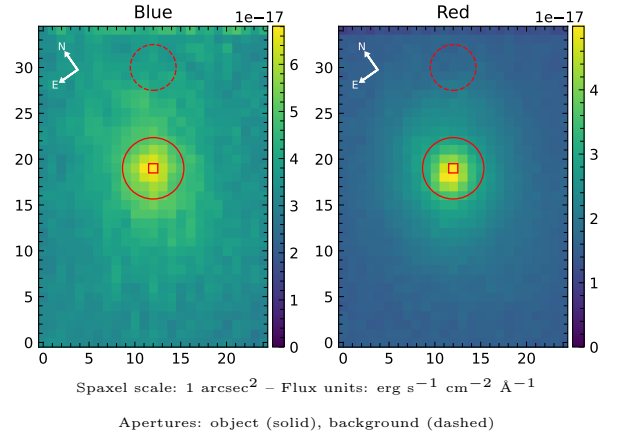


# MCG-05-10-008

Spectrum ID	18019672_sp1	Spectrum Type	Sy 1.8
Alt name	g0403174-304810	Quality Flag	good
$z$	0.0602	AGN reference	6dFGS
RA, Dec	60.8224, -30.8026	MW $E(B - V)$	0.011
MJD	60607.69	Power law $\alpha_\nu$	$-1.29 \pm 0.09$
SNR/ $\text{\AA}$ B/R	10.7/22.1	$\log L_{5100, \text{AGN}}$	$42.91 \pm 0.03$
Obs Airmass	1.01	$\log H\beta_{\text{Br}}/[\text{O III}]$	$-0.52 \pm 0.08$
SMSS ID	18019672	$\log M_{L5100}/M_\odot$	$7.92 \pm 0.12$
Closest SMSS	13.86", 18019671	$\log M_{\text{H}\alpha}/M_\odot$	$7.04 \pm 0.03$
SMSS Mean $r_{\text{psf}}$	$16.0 \pm 0.1$	$\log M_{\text{H}\beta}/M_\odot$	$7.78 \pm 0.13$
2MASS $K_{\text{ext}}$	$12.5 \pm 0.1$	$\log M_{[\text{O III}]} / M_\odot$	$8.16 \pm 0.12$



## Emission Line Measurements

Line	$\log L$ (erg s $^{-1}$ )	FWHM (km s $^{-1}$ )	$\sigma$ (km s $^{-1}$ )	EW ( $\text{\AA}$ )
H $\gamma$ Narrow	$39.75 \pm 0.29$	$409 \pm 63$	$214 \pm 25$	$3.19 \pm 1.14$
<b>H<math>\gamma</math> Broad</b>	—	—	—	—
[O III] 4364	—	—	—	—
He II Narrow	—	—	—	—
He II Broad	$39.74 \pm 0.35$	$1243 \pm 63$	$528 \pm 25$	$3.23 \pm 1.58$
H $\beta$ Narrow	$40.49 \pm 0.05$	$409 \pm 63$	$214 \pm 25$	$18.75 \pm 1.05$
<b>H<math>\beta</math> Broad</b>	<b><math>40.81 \pm 0.08</math></b>	<b><math>5517 \pm 762</math></b>	<b><math>2291 \pm 45</math></b>	<b><math>38.46 \pm 3.47</math></b>
[O III] 5007	$41.33 \pm 0.01$	$409 \pm 63$	$214 \pm 25$	$132.02 \pm 1.14$
He I Narrow	$39.53 \pm 0.15$	$309 \pm 62$	$129 \pm 25$	$2.37 \pm 0.48$
He I Broad	$39.42 \pm 0.47$	$3688 \pm 63$	$1566 \pm 25$	$1.83 \pm 1.64$
[O I] 6300	$40.07 \pm 0.04$	$309 \pm 62$	$129 \pm 25$	$8.52 \pm 0.58$
H $\alpha$ Narrow	$40.97 \pm 0.01$	$309 \pm 62$	$129 \pm 25$	$70.82 \pm 0.63$
<b>H<math>\alpha</math> Broad</b>	<b><math>41.39 \pm 0.01</math></b>	<b><math>2852 \pm 75</math></b>	<b><math>1060 \pm 25</math></b>	<b><math>183.39 \pm 1.74</math></b>
[N II] 6585	$40.87 \pm 0.01$	$309 \pm 62$	$129 \pm 25$	$55.79 \pm 0.60$
[S II] 6718	$40.38 \pm 0.02$	$309 \pm 62$	$129 \pm 25$	$18.24 \pm 0.52$
[S II] 6732	$40.32 \pm 0.03$	$309 \pm 62$	$129 \pm 25$	$15.93 \pm 0.54$

## Emission Summary

H $\alpha$ Broad SNR	6.67
H $\beta$ Broad SNR	1.25
H $\gamma$ Broad SNR	0.64
AGN frac	0.28
Host frac	0.72
$\log L_{5100, \text{Host}}$	43.31
Fe II/H $\beta$	0.29
Fe II/[O III]	0.09

## Quality Flags

spurious_hab/hbb	0/0
15100	1
balmer	1
balmer_snr	2
hb_width	0
balmer_width	1