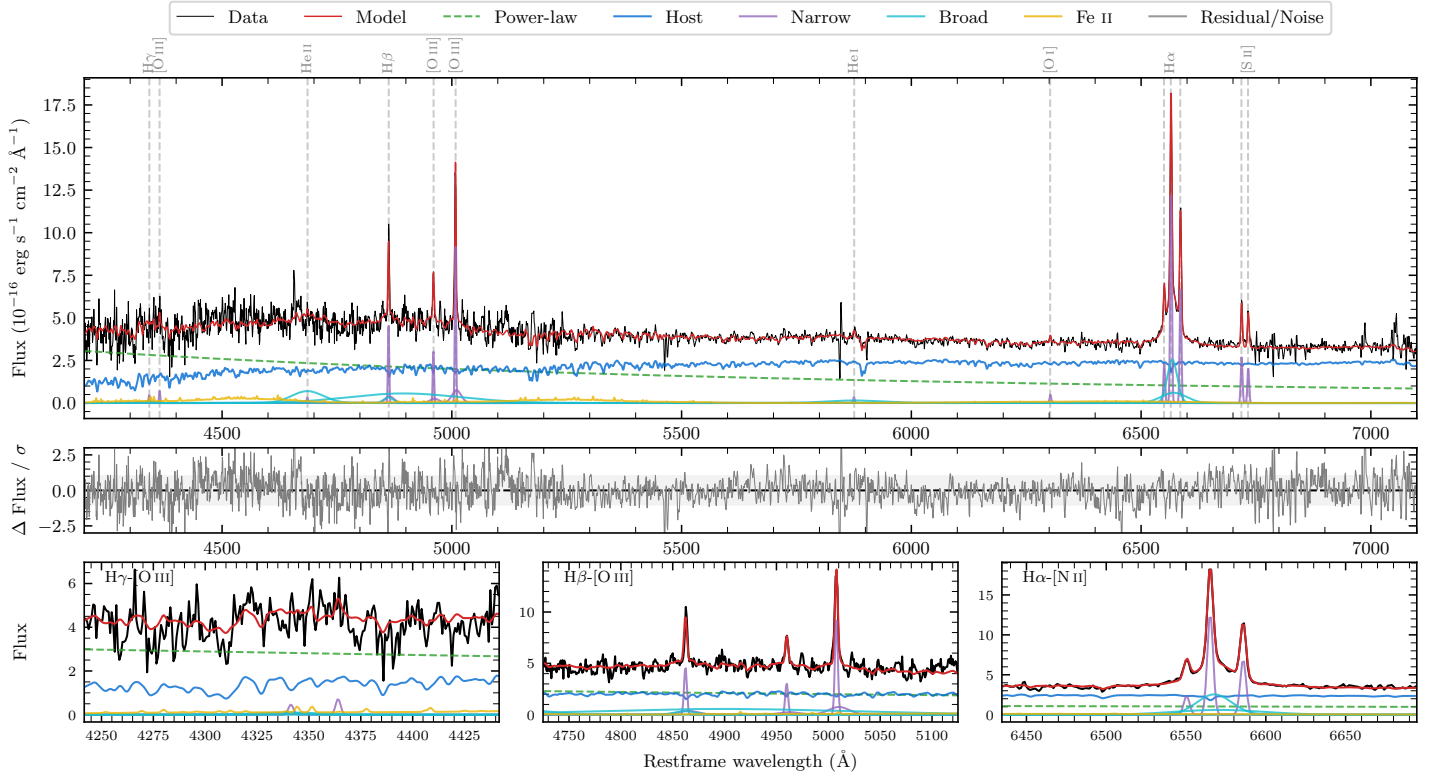
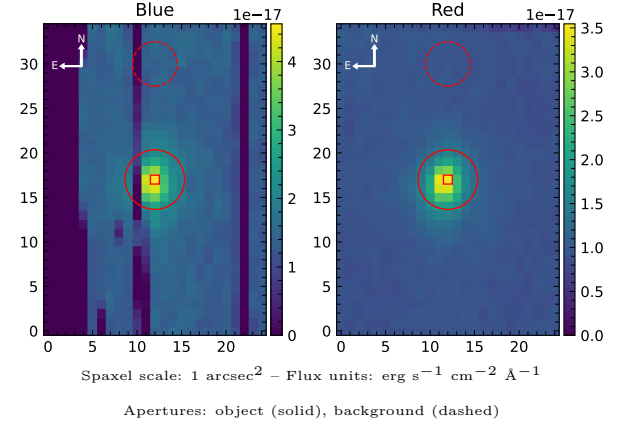


6dFGS gJ034623.7-441625

Spectrum ID	504582544_sp1	Spectrum Type	Sy 1.8+
Alt name	g0346237-441625	Quality Flag	good
z	0.0781	AGN reference	6dFGS
RA, Dec	56.5986, -44.2736	MW $E(B - V)$	0.010
MJD	60255.61	Power law α_ν	0.44 ± 0.06
SNR/ \AA B/R	9.6/15.9	$\log L_{5100, \text{AGN}}$	43.17 ± 0.02
Obs Airmass	1.04	$\log H\beta_{\text{Br}}/[\text{O III}]$	< -0.55
SMSS ID	504582544	$\log M_{L5100}/M_\odot$	—
Closest SMSS	None $< 15''$	$\log M_{H\alpha}/M_\odot$	6.30 ± 0.05
SMSS Mean r_{psf}	17.2 ± 0.2	$\log M_{H\beta}/M_\odot$	—
2MASS K_{ext}	13.2 ± 0.2	$\log M_{[\text{O III}]} / M_\odot$	—



Emission Line Measurements

Line	$\log L$ (erg s $^{-1}$)	FWHM (km s $^{-1}$)	σ (km s $^{-1}$)	EW (Å)
H γ Narrow	—	—	—	—
Hγ Broad	—	—	—	—
[O III] 4364	39.55 ± 0.28	205 ± 62	83 ± 25	0.84 ± 0.37
He II Narrow	39.25 ± 0.39	205 ± 62	83 ± 25	0.51 ± 0.36
He II Broad	—	—	—	—
H β Narrow	40.61 ± 0.06	209 ± 63	379 ± 37	12.61 ± 1.17
Hβ Broad	< 40.33	—	—	—
[O III] 5007	40.92 ± 0.03	209 ± 63	379 ± 37	27.57 ± 1.24
He I Narrow	39.36 ± 0.22	205 ± 62	83 ± 25	1.13 ± 0.35
He I Broad	40.56 ± 0.11	7054 ± 63	2995 ± 25	17.82 ± 2.21
[O I] 6300	39.54 ± 0.13	205 ± 62	83 ± 25	2.05 ± 0.69
H α Narrow	40.97 ± 0.01	205 ± 62	83 ± 25	60.74 ± 0.53
Hα Broad	41.26 ± 0.01	1333 ± 68	597 ± 29	117.04 ± 1.82
[N II] 6585	40.71 ± 0.01	205 ± 62	83 ± 25	33.48 ± 0.48
[S II] 6718	40.31 ± 0.05	205 ± 62	83 ± 25	14.05 ± 0.88
[S II] 6732	40.20 ± 0.04	205 ± 62	83 ± 25	10.84 ± 0.59

Emission Summary

H α Broad SNR	7.01
H β Broad SNR	0.74
H γ Broad SNR	0.00
AGN frac	0.51
Host frac	0.49
$\log L_{5100, \text{Host}}$	43.15
Fe II/H β	—
Fe II/[O III]	—

Quality Flags

spurious_hab/hbb	0/1
15100	2
balmer	2
balmer_snr	2
hb_width	2
balmer_width	2