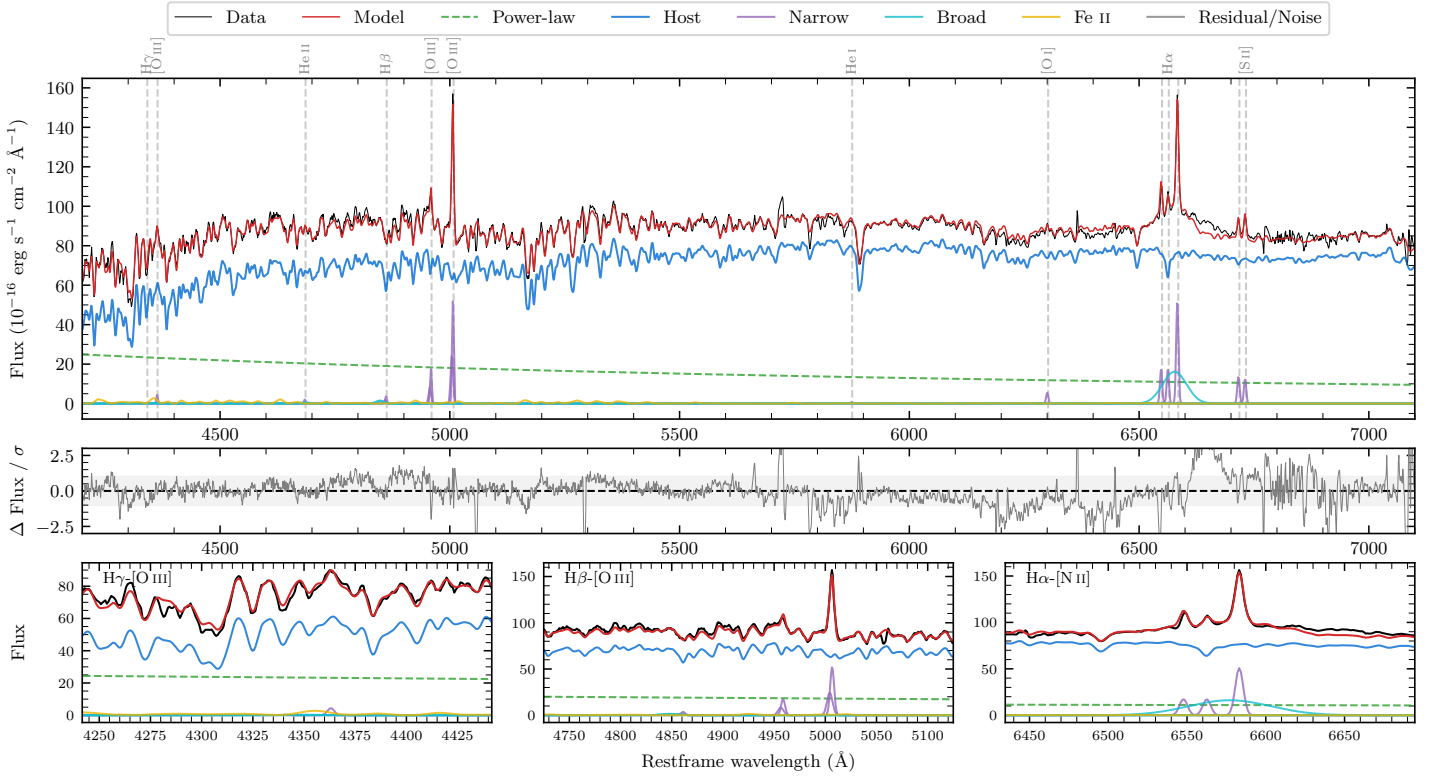
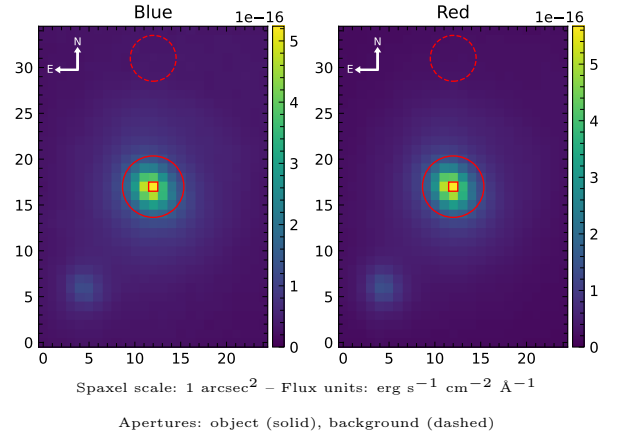


# MCG-04-09-052

Spectrum ID	20851826_sp1	Spectrum Type	Sy 1.8
Alt name	g0342037-211440	Quality Flag	good
$z$	0.0142	AGN reference	6dFGS
RA, Dec	55.5156, -21.2446	MW $E(B - V)$	0.027
MJD	60260.53	Power law $\alpha_\nu$	$-0.17 \pm 0.11$
SNR/ $\text{\AA}$ B/R	30.5/48.7	$\log L_{5100, \text{AGN}}$	$42.62 \pm 0.03$
Obs Airmass	1.10	$\log H\beta_{\text{Br}}/[\text{O III}]$	$-0.80 \pm 0.14$
SMSS ID	20851826	$\log M_{L5100}/M_\odot$	$6.46 \pm 0.04$
Closest SMSS	None $< 15''$	$\log M_{\text{H}\alpha}/M_\odot$	$6.60 \pm 0.06$
SMSS Mean $r_{\text{psf}}$	$12.8 \pm 0.1$	$\log M_{\text{H}\beta}/M_\odot$	$5.85 \pm 0.11$
2MASS $K_{\text{ext}}$	$8.6 \pm 0.0$	$\log M_{[\text{O III}]} / M_\odot$	$6.32 \pm 0.06$



## Emission Line Measurements

Line	$\log L$ (erg s $^{-1}$ )	FWHM (km s $^{-1}$ )	$\sigma$ (km s $^{-1}$ )	EW ( $\text{\AA}$ )
H $\gamma$ Narrow	—	—	—	—
<b>H<math>\gamma</math> Broad</b>	—	—	—	—
[O III] 4364	$38.95 \pm 0.26$	$274 \pm 62$	$116 \pm 25$	$0.81 \pm 0.30$
He II Narrow	$38.65 \pm 0.37$	$274 \pm 62$	$116 \pm 25$	$0.47 \pm 0.28$
He II Broad	$38.82 \pm 0.47$	$1178 \pm 62$	$500 \pm 25$	$0.68 \pm 0.58$
H $\beta$ Narrow	$39.13 \pm 0.19$	$326 \pm 63$	$151 \pm 25$	$1.51 \pm 0.34$
<b>H<math>\beta</math> Broad</b>	<b><math>39.50 \pm 0.14</math></b>	<b><math>1184 \pm 25</math></b>	<b><math>315 \pm 25</math></b>	<b><math>3.00 \pm 0.63</math></b>
[O III] 5007	$40.30 \pm 0.01$	$326 \pm 63$	$151 \pm 25$	$23.48 \pm 0.40$
He I Narrow	—	—	—	—
He I Broad	—	—	—	—
[O I] 6300	$39.20 \pm 0.10$	$274 \pm 62$	$116 \pm 25$	$2.86 \pm 0.40$
H $\alpha$ Narrow	$39.72 \pm 0.04$	$274 \pm 62$	$116 \pm 25$	$10.12 \pm 0.41$
<b>H<math>\alpha</math> Broad</b>	<b><math>40.71 \pm 0.01</math></b>	<b><math>2765 \pm 64</math></b>	<b><math>1006 \pm 25</math></b>	<b><math>98.34 \pm 1.30</math></b>
[N II] 6585	$40.19 \pm 0.01$	$274 \pm 62$	$116 \pm 25$	$30.10 \pm 0.44$
[S II] 6718	$39.62 \pm 0.04$	$274 \pm 62$	$116 \pm 25$	$8.40 \pm 0.40$
[S II] 6732	$39.58 \pm 0.04$	$274 \pm 62$	$116 \pm 25$	$7.74 \pm 0.44$

## Emission Summary

H $\alpha$ Broad SNR	5.78
H $\beta$ Broad SNR	1.13
H $\gamma$ Broad SNR	0.00
AGN frac	0.21
Host frac	0.79
$\log L_{5100, \text{Host}}$	43.20
Fe II/H $\beta$	4.70
Fe II/[O III]	0.64

## Quality Flags

spurious_hab/hbb	0/0
15100	1
balmer	1
balmer_snr	2
hb_width	1
balmer_width	2