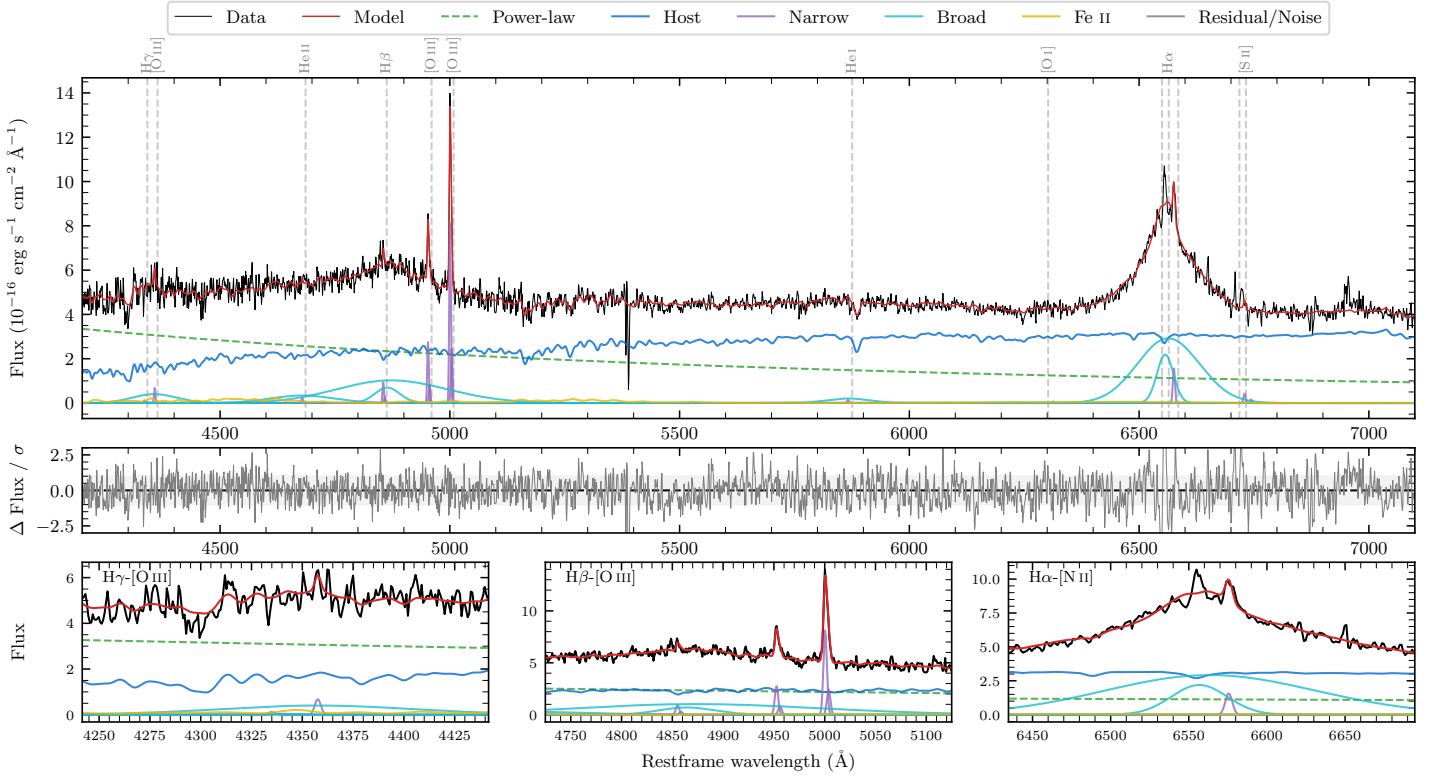
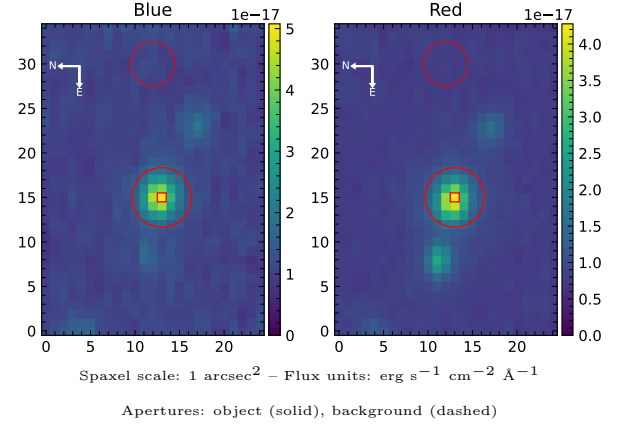


# 6dFGS gJ031330.7-300751

Spectrum ID	17246886_sp1	Spectrum Type	Sy 1.0
Alt name	g0313307-300751	Quality Flag	good
$z$	0.0933	AGN reference	6dFGS
RA, Dec	48.3778, -30.1310	MW $E(B - V)$	0.013
MJD	60224.63	Power law $\alpha_\nu$	$0.43 \pm 0.06$
SNR/ $\text{\AA}$ B/R	14.9/21.5	$\log L_{5100, \text{AGN}}$	$43.38 \pm 0.03$
Obs Airmass	1.04	$\log H\beta_{\text{Br}}/[\text{O III}]$	$0.90 \pm 0.02$
SMSS ID	17246886	$\log M_{L5100}/M_\odot$	$8.57 \pm 0.12$
Closest SMSS	6.88", 17246887	$\log M_{\text{H}\alpha}/M_\odot$	$7.78 \pm 0.03$
SMSS Mean $r_{\text{psf}}$	$17.1 \pm 0.0$	$\log M_{\text{H}\beta}/M_\odot$	$8.74 \pm 0.12$
2MASS $K_{\text{ext}}$	$13.6 \pm 0.2$	$\log M_{[\text{O III}]} / M_\odot$	$8.47 \pm 0.13$



## Emission Line Measurements

Line	$\log L$ (erg s $^{-1}$ )	FWHM (km s $^{-1}$ )	$\sigma$ (km s $^{-1}$ )	EW ( $\text{\AA}$ )
H $\gamma$ Narrow	—	—	—	—
<b>H<math>\gamma</math> Broad</b>	<b><math>41.09 \pm 0.08</math></b>	<b><math>7500 \pm 450</math></b>	<b><math>2809 \pm 40</math></b>	<b><math>17.69 \pm 1.55</math></b>
[O III] 4364	$39.79 \pm 0.21$	$242 \pm 63$	$102 \pm 25$	$0.91 \pm 0.25$
He II Narrow	$39.35 \pm 0.40$	$242 \pm 63$	$102 \pm 25$	$0.39 \pm 0.26$
He II Broad	$41.16 \pm 0.07$	$10432 \pm 64$	$4430 \pm 26$	$25.23 \pm 1.95$
H $\beta$ Narrow	$40.09 \pm 0.12$	$294 \pm 64$	$133 \pm 25$	$2.36 \pm 0.34$
<b>H<math>\beta</math> Broad</b>	<b><math>41.94 \pm 0.02</math></b>	<b><math>9251 \pm 1281</math></b>	<b><math>5729 \pm 72</math></b>	<b><math>167.61 \pm 3.25</math></b>
[O III] 5007	$41.04 \pm 0.02$	$294 \pm 64$	$133 \pm 25$	$22.64 \pm 0.45$
He I Narrow	$39.24 \pm 0.36$	$242 \pm 63$	$102 \pm 25$	$0.53 \pm 0.39$
He I Broad	$40.77 \pm 0.08$	$5537 \pm 66$	$2351 \pm 27$	$17.61 \pm 1.62$
[O I] 6300	—	—	—	—
H $\alpha$ Narrow	$40.33 \pm 0.05$	$242 \pm 63$	$102 \pm 25$	$8.65 \pm 0.52$
<b>H<math>\alpha</math> Broad</b>	<b><math>42.16 \pm 0.01</math></b>	<b><math>3869 \pm 119</math></b>	<b><math>2325 \pm 25</math></b>	<b><math>575.01 \pm 2.89</math></b>
[N II] 6585	—	—	—	—
[S II] 6718	$39.77 \pm 0.15$	$242 \pm 63$	$102 \pm 25$	$2.50 \pm 0.67$
[S II] 6732	$39.34 \pm 0.30$	$242 \pm 63$	$102 \pm 25$	$0.94 \pm 0.55$

## Emission Summary

H $\alpha$ Broad SNR	15.04
H $\beta$ Broad SNR	5.06
H $\gamma$ Broad SNR	1.33
AGN frac	0.47
Host frac	0.53
$\log L_{5100, \text{Host}}$	43.42
Fe II/H $\beta$	0.12
Fe II/[O III]	0.97

## Quality Flags

spurious_hab/hbb	0/0
15100	2
balmer	0
balmer_snr	1
hb_width	1
balmer_width	1