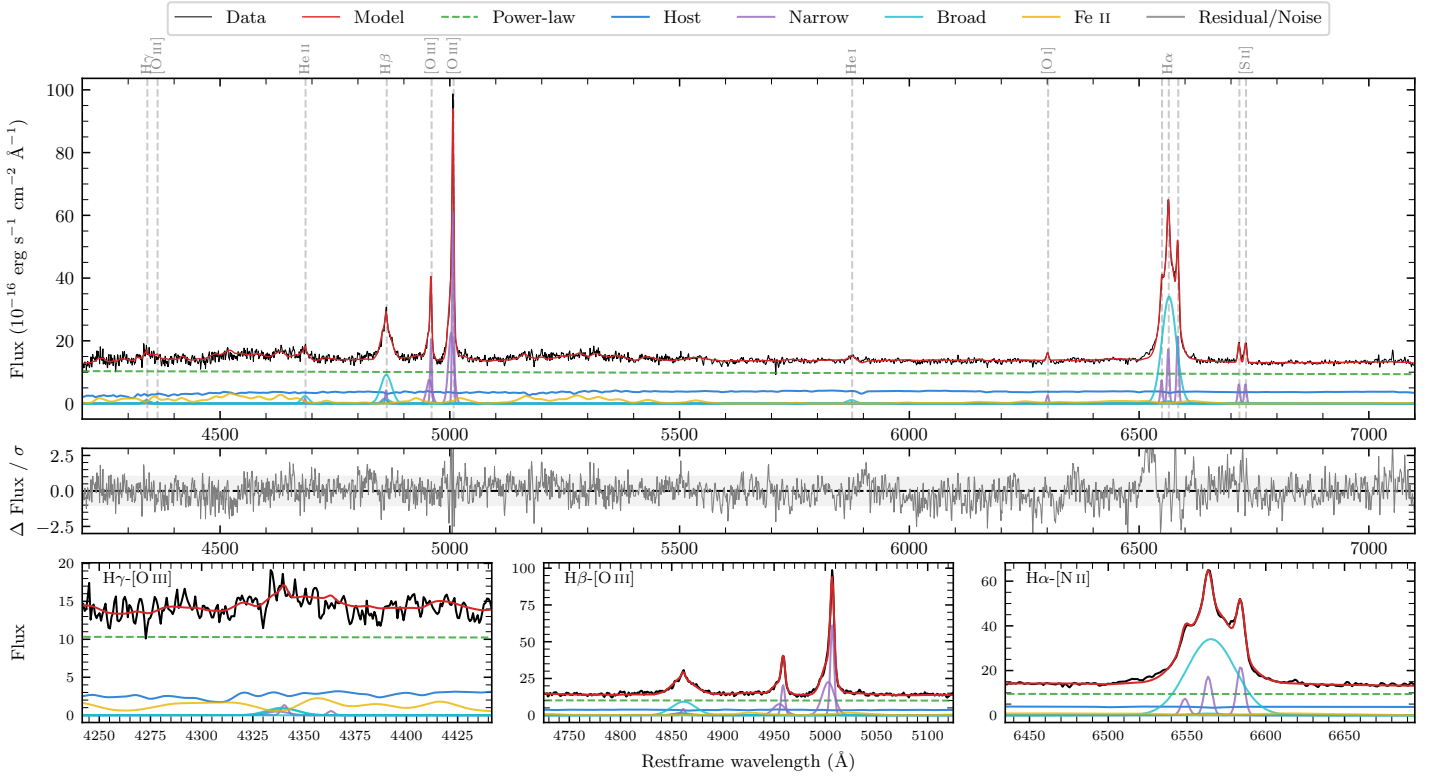
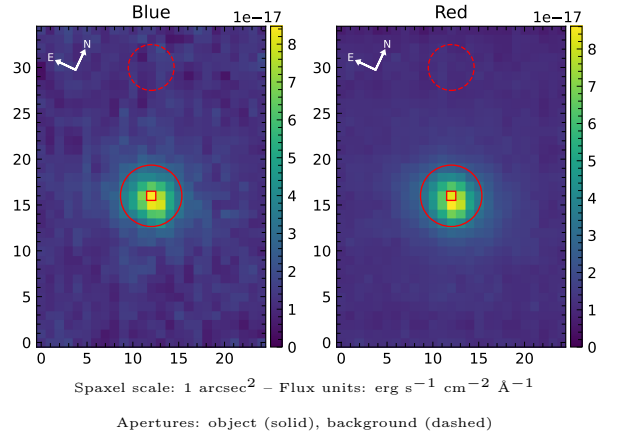


LEDA 11080

Spectrum ID	14710195_sp1	Spectrum Type	Sy 1.5
Alt name	g0256027-162916	Quality Flag	good
z	0.0316	AGN reference	6dFGS
RA, Dec	44.0110, -16.4876	MW $E(B - V)$	0.038
MJD	60179.79	Power law α_ν	-1.81 ± 0.05
SNR/ \AA B/R	12.0/21.4	$\log L_{5100, \text{AGN}}$	43.08 ± 0.02
Obs Airmass	1.04	$\log H\beta_{\text{Br}}/[\text{O III}]$	-0.32 ± 0.02
SMSS ID	14710195	$\log M_{L5100}/M_\odot$	6.89 ± 0.06
Closest SMSS	None $< 15''$	$\log M_{\text{H}\alpha}/M_\odot$	6.63 ± 0.05
SMSS Mean r_{psf}	14.9 ± 0.0	$\log M_{\text{H}\beta}/M_\odot$	6.71 ± 0.07
2MASS K_{ext}	11.6 ± 0.1	$\log M_{[\text{O III}]} / M_\odot$	6.99 ± 0.06



Emission Line Measurements

Line	$\log L$ (erg s $^{-1}$)	FWHM (km s $^{-1}$)	σ (km s $^{-1}$)	EW (Angstroms)
H γ Narrow	39.46 ± 0.33	321 ± 63	300 ± 25	1.20 ± 0.51
Hγ Broad	39.98 ± 0.16	1188 ± 63	403 ± 25	3.41 ± 0.62
[O III] 4364	—	—	—	—
He II Narrow	39.26 ± 0.30	265 ± 63	111 ± 25	0.75 ± 0.27
He II Broad	40.07 ± 0.11	1199 ± 63	509 ± 25	4.87 ± 0.58
H β Narrow	40.01 ± 0.11	321 ± 63	300 ± 25	4.36 ± 0.42
Hβ Broad	40.86 ± 0.02	1562 ± 107	604 ± 44	30.34 ± 0.63
[O III] 5007	41.18 ± 0.01	321 ± 63	300 ± 25	64.29 ± 0.50
He I Narrow	38.82 ± 0.37	265 ± 63	111 ± 25	0.29 ± 0.15
He I Broad	39.84 ± 0.09	1187 ± 63	504 ± 25	2.97 ± 0.32
[O I] 6300	39.56 ± 0.08	265 ± 63	111 ± 25	1.62 ± 0.16
H α Narrow	40.41 ± 0.04	265 ± 63	111 ± 25	11.40 ± 0.23
Hα Broad	41.51 ± 0.01	1634 ± 91	624 ± 36	145.50 ± 0.48
[N II] 6585	40.51 ± 0.02	265 ± 63	111 ± 25	14.42 ± 0.21
[S II] 6718	39.97 ± 0.03	265 ± 63	111 ± 25	4.22 ± 0.18
[S II] 6732	39.97 ± 0.03	265 ± 63	111 ± 25	4.15 ± 0.18

Emission Summary

H α Broad SNR	28.29
H β Broad SNR	8.76
H γ Broad SNR	1.74
AGN frac	0.74
Host frac	0.26
$\log L_{5100, \text{Host}}$	42.63
Fe II/H β	1.99
Fe II/[O III]	0.94

Quality Flags

spurious_hab/hbb	0/0
15100	0
balmer	0
balmer_snr	1
hb_width	0
balmer_width	1