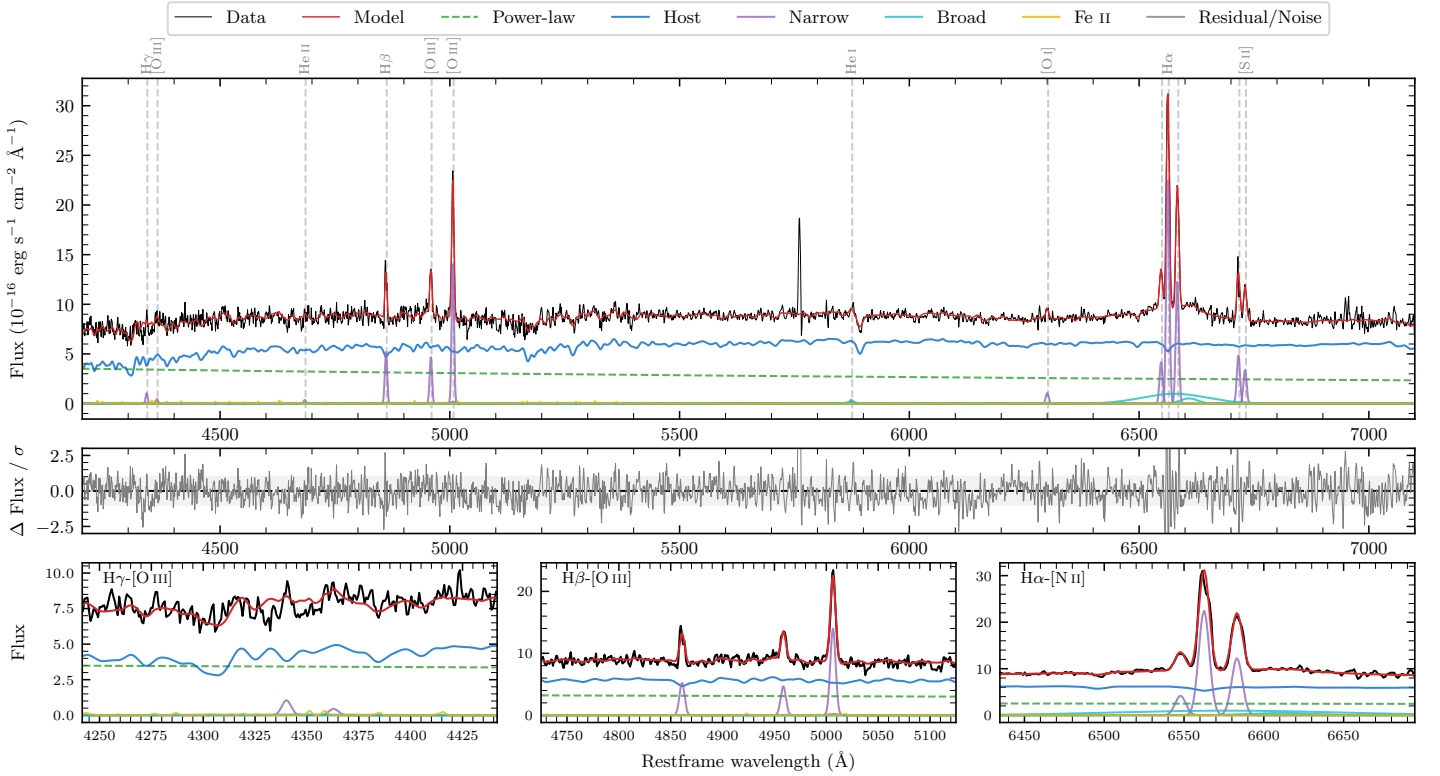
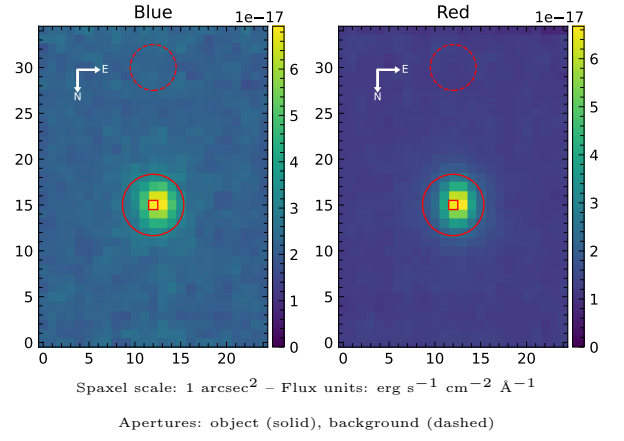


# LEDA 305493

Spectrum ID	499431245_sp1	Spectrum Type	Sy 1.5+
Alt name	g0242400-662047	Quality Flag	good
$z$	0.0931	AGN reference	6dFGS
RA, Dec	40.6668, -66.3465	MW $E(B-V)$	0.027
MJD	60164.77	Power law $\alpha_\nu$	$-1.23 \pm 0.20$
SNR/Å B/R	13.4/21.0	$\log L_{5100, \text{AGN}}$	$43.53 \pm 0.03$
Obs Airmass	1.25	$\log H\beta_{\text{Br}}/[\text{O III}]$	$< -0.04$
SMSS ID	499431245	$\log M_{L5100}/M_\odot$	—
Closest SMSS	None $< 15''$	$\log M_{\text{H}\alpha}/M_\odot$	$7.81 \pm 0.09$
SMSS Mean $r_{\text{psf}}$	$16.1 \pm 0.1$	$\log M_{\text{H}\beta}/M_\odot$	—
2MASS $K_{\text{ext}}$	$12.5 \pm 0.1$	$\log M_{[\text{O III}]} / M_\odot$	—



## Emission Line Measurements

Line	$\log L$ (erg s $^{-1}$ )	FWHM (km s $^{-1}$ )	$\sigma$ (km s $^{-1}$ )	EW (Å)
H $\gamma$ Narrow	$40.16 \pm 0.21$	$362 \pm 63$	$158 \pm 26$	$1.91 \pm 0.64$
<b>H<math>\gamma</math> Broad</b>	—	—	—	—
[O III] 4364	$39.78 \pm 0.36$	$360 \pm 62$	$152 \pm 25$	$0.81 \pm 0.51$
He II Narrow	$39.73 \pm 0.39$	$360 \pm 62$	$152 \pm 25$	$0.76 \pm 0.48$
He II Broad	—	—	—	—
H $\beta$ Narrow	$40.91 \pm 0.04$	$362 \pm 63$	$158 \pm 26$	$11.64 \pm 0.66$
<b>H<math>\beta</math> Broad</b>	$< 41.26$	—	—	—
[O III] 5007	$41.35 \pm 0.02$	$362 \pm 63$	$158 \pm 26$	$32.78 \pm 0.76$
He I Narrow	$39.84 \pm 0.31$	$360 \pm 62$	$152 \pm 25$	$1.15 \pm 0.41$
He I Broad	$40.08 \pm 0.32$	$1178 \pm 62$	$500 \pm 25$	$2.05 \pm 0.78$
[O I] 6300	$40.31 \pm 0.10$	$360 \pm 62$	$152 \pm 25$	$3.64 \pm 0.53$
H $\alpha$ Narrow	$41.65 \pm 0.01$	$360 \pm 62$	$152 \pm 25$	$82.55 \pm 0.57$
<b>H<math>\alpha</math> Broad</b>	<b><math>41.68 \pm 0.03</math></b>	<b><math>5655 \pm 582</math></b>	<b><math>2595 \pm 42</math></b>	<b><math>87.59 \pm 2.50</math></b>
[N II] 6585	$41.39 \pm 0.01$	$360 \pm 62$	$152 \pm 25$	$45.37 \pm 0.55$
[S II] 6718	$41.00 \pm 0.03$	$360 \pm 62$	$152 \pm 25$	$18.54 \pm 0.65$
[S II] 6732	$40.84 \pm 0.03$	$360 \pm 62$	$152 \pm 25$	$13.10 \pm 0.67$

## Emission Summary

H $\alpha$ Broad SNR	2.24
H $\beta$ Broad SNR	0.00
H $\gamma$ Broad SNR	0.00
AGN frac	0.36
Host frac	0.64
$\log L_{5100, \text{Host}}$	43.78
Fe II/H $\beta$	—
Fe II/[O III]	—

## Quality Flags

spurious_hab/hbb	0/0
15100	1
balmer	2
balmer_snr	2
hb_width	2
balmer_width	2