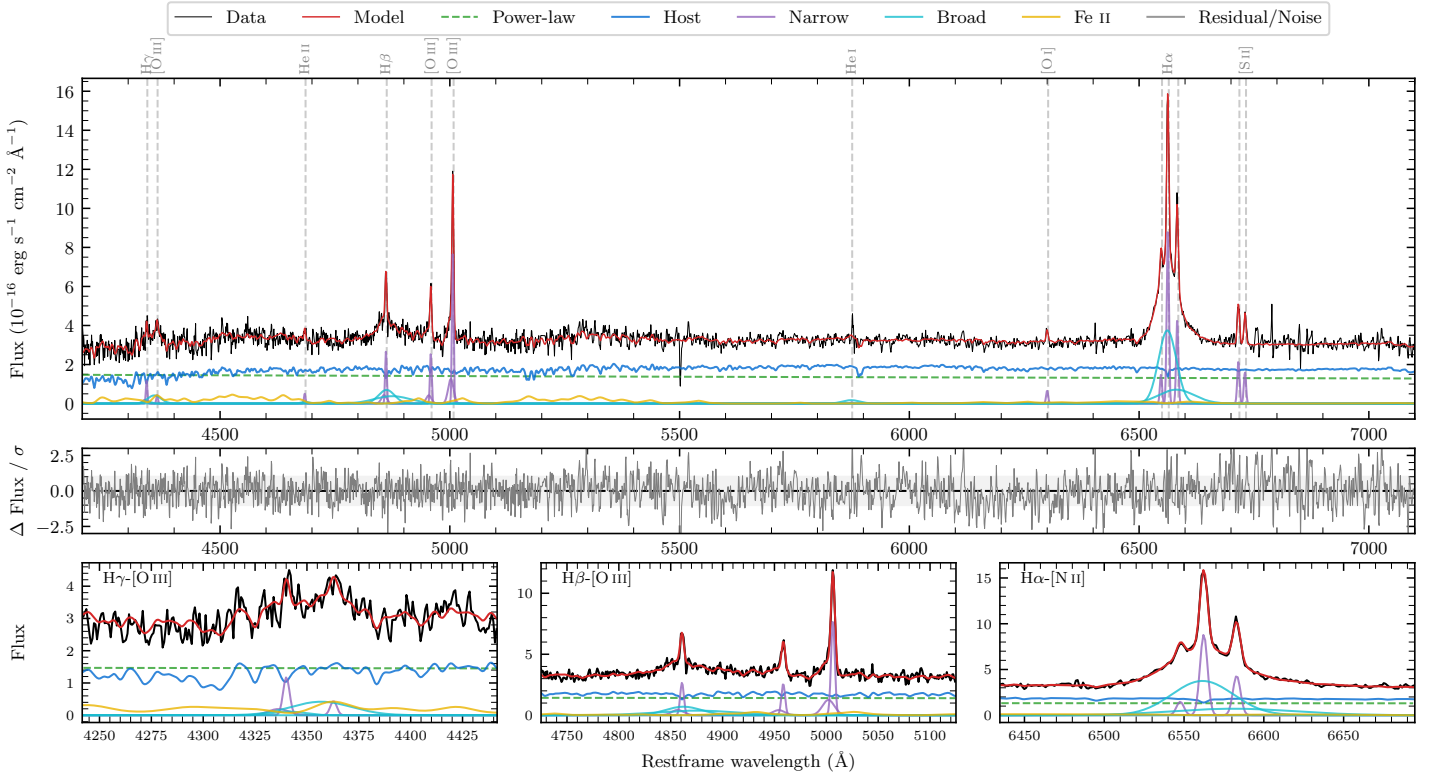
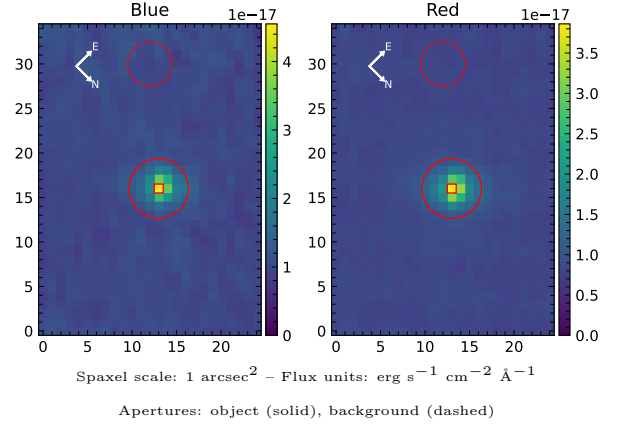


2MASS J02321738-1216330

Spectrum ID	14785828_sp1	Spectrum Type	Sy 1.5
Alt name	g0232174-121633	Quality Flag	good
z	0.0716	AGN reference	6dFGS
RA, Dec	38.0724, -12.2758	MW $E(B - V)$	0.018
MJD	60180.76	Power law α_ν	-1.74 ± 0.10
SNR/ \AA B/R	10.8/17.8	$\log L_{5100, \text{AGN}}$	42.96 ± 0.03
Obs Airmass	1.06	$\log H\beta_{\text{Br}}/[\text{O III}]$	0.11 ± 0.04
SMSS ID	14785828	$\log M_{L5100}/M_\odot$	7.47 ± 0.08
Closest SMSS	None $< 15''$	$\log M_{\text{H}\alpha}/M_\odot$	6.93 ± 0.03
SMSS Mean r_{psf}	17.3 ± 0.1	$\log M_{\text{H}\beta}/M_\odot$	7.38 ± 0.09
2MASS K_{ext}	13.8 ± 0.1	$\log M_{[\text{O III}]} / M_\odot$	7.46 ± 0.08



Emission Line Measurements

Line	$\log L$ (erg s $^{-1}$)	FWHM (km s $^{-1}$)	σ (km s $^{-1}$)	EW (\AA)
H γ Narrow	39.98 ± 0.10	280 ± 63	255 ± 30	5.18 ± 0.85
Hγ Broad	40.39 ± 0.10	2533 ± 233	817 ± 52	12.94 ± 1.47
[O III] 4364	39.37 ± 0.27	259 ± 63	108 ± 25	1.27 ± 0.46
He II Narrow	39.47 ± 0.20	259 ± 63	108 ± 25	1.62 ± 0.41
He II Broad	39.41 ± 0.38	1181 ± 63	501 ± 25	1.41 ± 0.89
H β Narrow	40.38 ± 0.04	280 ± 63	255 ± 30	13.54 ± 0.80
Hβ Broad	40.96 ± 0.03	3220 ± 281	1493 ± 95	51.31 ± 2.14
[O III] 5007	40.86 ± 0.02	280 ± 63	255 ± 30	40.49 ± 0.87
He I Narrow	—	—	—	—
He I Broad	40.05 ± 0.12	2230 ± 90	947 ± 37	6.49 ± 1.10
[O I] 6300	39.71 ± 0.07	259 ± 63	108 ± 25	3.05 ± 0.31
H α Narrow	40.85 ± 0.01	259 ± 63	108 ± 25	42.78 ± 0.41
Hα Broad	41.53 ± 0.01	2268 ± 68	960 ± 28	204.65 ± 1.50
[N II] 6585	40.54 ± 0.01	259 ± 63	108 ± 25	21.03 ± 0.39
[S II] 6718	40.25 ± 0.02	259 ± 63	108 ± 25	10.75 ± 0.35
[S II] 6732	40.12 ± 0.03	259 ± 63	108 ± 25	8.01 ± 0.34

Emission Summary

H α Broad SNR	14.33
H β Broad SNR	3.47
H γ Broad SNR	1.58
AGN frac	0.46
Host frac	0.54
$\log L_{5100, \text{Host}}$	43.03
Fe II/H β	1.29
Fe II/[O III]	1.64

Quality Flags

spurious_hab/hbb	0/0
15100	1
balmer	0
balmer_snrm	1
hb_width	0
balmer_width	0