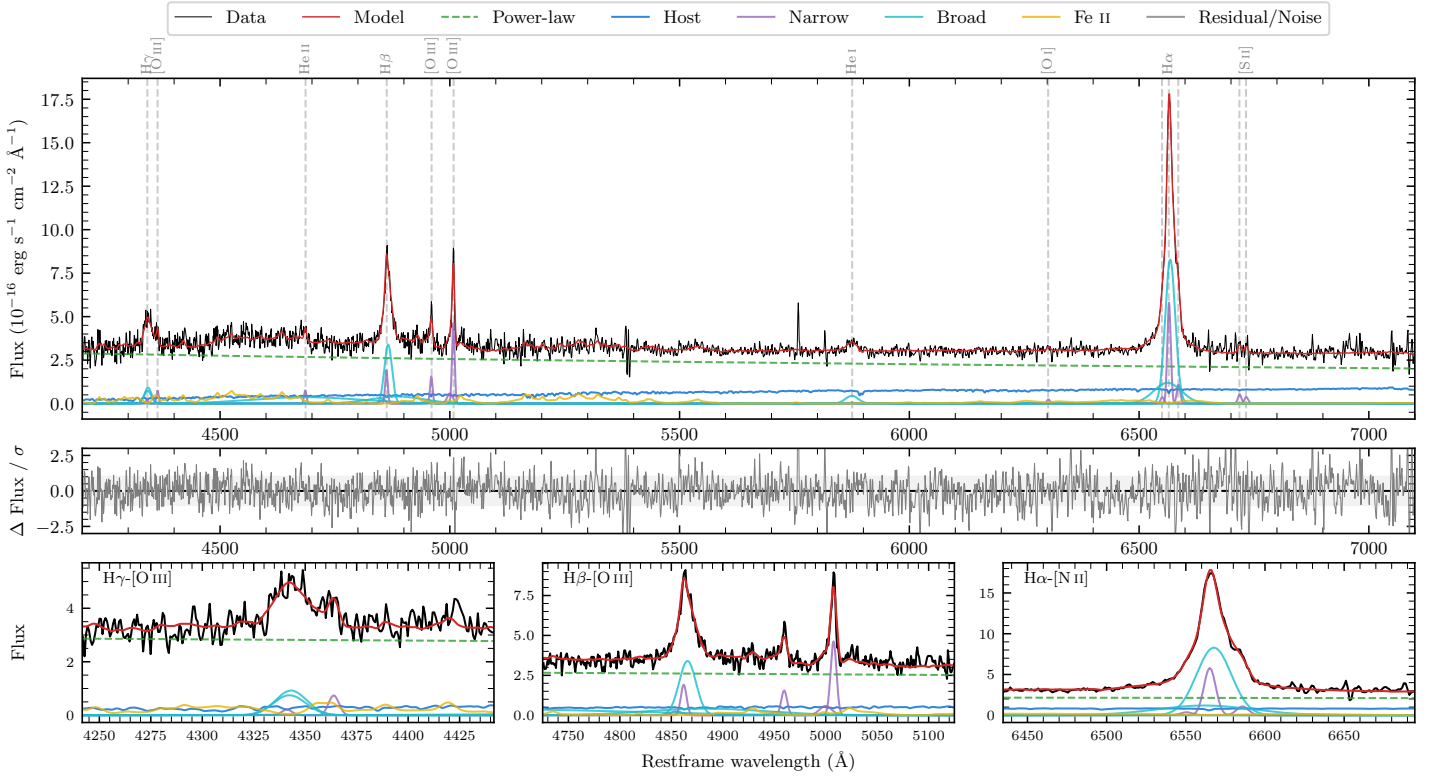
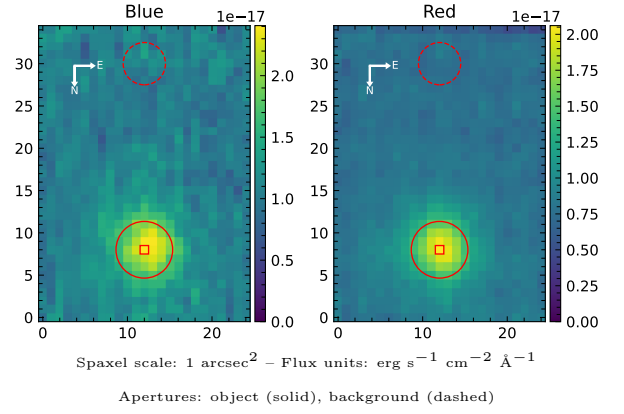


LEDA 649044

Spectrum ID	9352426_sp1	Spectrum Type	Sy 1.2
Alt name	g0142223-352541	Quality Flag	good
z	0.0939	AGN reference	6dFGS
RA, Dec	25.5928, -35.4281	MW $E(B - V)$	0.014
MJD	60209.65	Power law α_ν	-1.32 ± 0.17
SNR/Å B/R	10.0/14.8	$\log L_{5100, \text{AGN}}$	43.46 ± 0.02
Obs Airmass	1.00	$\log H\beta_{\text{Br}}/[\text{O III}]$	0.50 ± 0.04
SMSS ID	9352426	$\log M_{L5100}/M_\odot$	6.90 ± 0.03
Closest SMSS	7.56", 1013098373	$\log M_{\text{H}\alpha}/M_\odot$	6.65 ± 0.04
SMSS Mean r_{psf}	16.7 ± 0.0	$\log M_{\text{H}\beta}/M_\odot$	6.83 ± 0.04
2MASS K_{ext}	13.1 ± 0.1	$\log M_{[\text{O III}]} / M_\odot$	6.74 ± 0.04



Emission Line Measurements

Line	$\log L$ (erg s $^{-1}$)	FWHM (km s $^{-1}$)	σ (km s $^{-1}$)	EW (Å)
H γ Narrow	39.61 ± 0.43	424 ± 64	289 ± 34	0.65 ± 0.52
Hγ Broad	40.91 ± 0.05	1261 ± 75	463 ± 27	12.52 ± 0.70
[O III] 4364	40.05 ± 0.15	404 ± 63	170 ± 25	1.80 ± 0.38
He II Narrow	40.09 ± 0.12	404 ± 63	170 ± 25	2.07 ± 0.45
He II Broad	41.42 ± 0.05	17660 ± 62	7500 ± 25	44.41 ± 3.08
H β Narrow	40.61 ± 0.08	424 ± 64	289 ± 34	7.02 ± 0.55
Hβ Broad	41.50 ± 0.03	1298 ± 41	1325 ± 61	54.43 ± 1.86
[O III] 5007	41.01 ± 0.02	424 ± 64	289 ± 34	17.81 ± 0.59
He I Narrow	39.13 ± 0.45	404 ± 63	170 ± 25	0.27 ± 0.24
He I Broad	40.58 ± 0.06	1675 ± 83	711 ± 34	7.46 ± 0.56
[O I] 6300	39.72 ± 0.18	404 ± 63	170 ± 25	1.08 ± 0.30
H α Narrow	41.12 ± 0.02	404 ± 63	170 ± 25	27.86 ± 0.39
Hα Broad	41.89 ± 0.01	1279 ± 63	568 ± 25	163.43 ± 1.01
[N II] 6585	40.39 ± 0.05	404 ± 63	170 ± 25	5.23 ± 0.34
[S II] 6718	40.09 ± 0.08	404 ± 63	170 ± 25	2.62 ± 0.37
[S II] 6732	39.95 ± 0.12	404 ± 63	170 ± 25	1.90 ± 0.36

Emission Summary

H α Broad SNR	27.10
H β Broad SNR	10.88
H γ Broad SNR	4.92
AGN frac	0.84
Host frac	0.16
$\log L_{5100, \text{Host}}$	42.72
Fe II/H β	0.90
Fe II/[O III]	2.79

Quality Flags

spurious_hab/hbb	0/0
15100	0
balmer	0
balmer_snr	0
hb_width	2
balmer_width	0