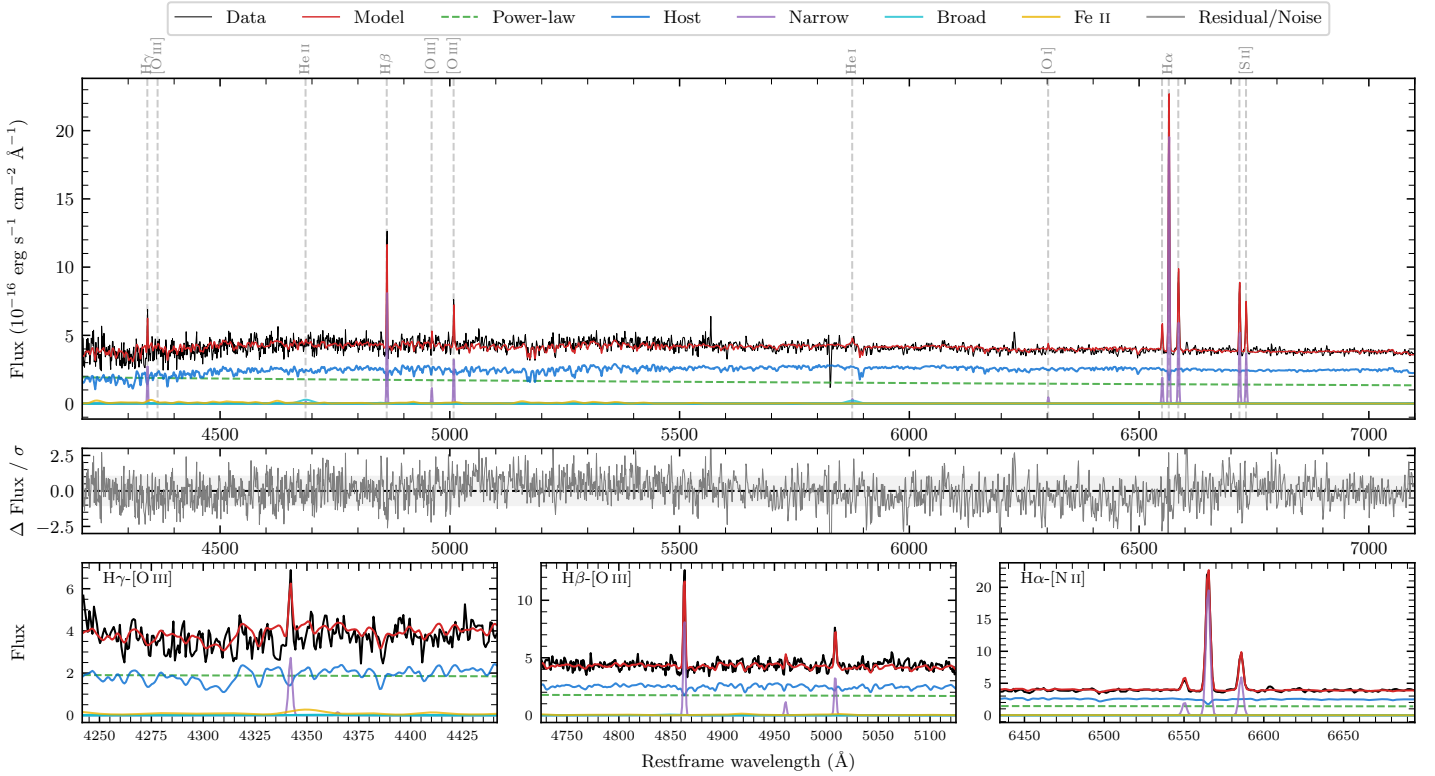
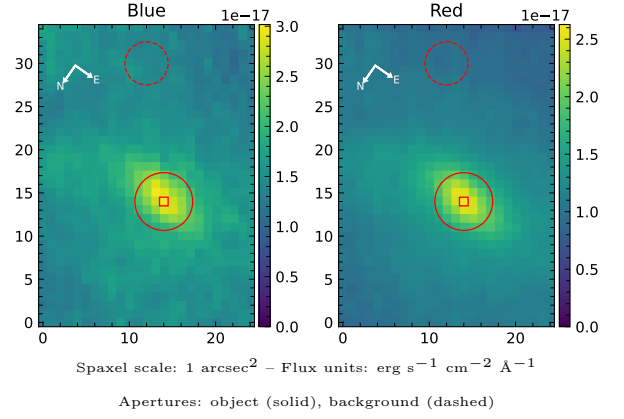


NGC 491A

| Spectrum ID | 9991156_sp1 | Spectrum Type | SF |
|----------------------------|-------------------|--|------------------|
| Alt name | g0120050-335401 | Quality Flag | good |
| z | 0.0119 | AGN reference | 6dFGS |
| RA, Dec | 20.0211, -33.9002 | MW $E(B - V)$ | 0.027 |
| MJD | 60224.54 | Power law α_ν | -1.32 ± 0.04 |
| SNR/ \AA B/R | 11.4/20.4 | $\log L_{5100, \text{AGN}}$ | 41.43 ± 0.02 |
| Obs Airmass | 1.05 | $\log H\beta_{\text{Br}}/[\text{O III}]$ | — |
| SMSS ID | 9991156 | $\log M_{L5100}/M_\odot$ | — |
| Closest SMSS | 1.97", 1013853154 | $\log M_{\text{H}\alpha}/M_\odot$ | — |
| SMSS Mean r_{psf} | 16.7 ± 0.3 | $\log M_{\text{H}\beta}/M_\odot$ | — |
| 2MASS K_{ext} | 12.3 ± 0.1 | $\log M_{[\text{O III}]} / M_\odot$ | — |



Emission Line Measurements

| Line | $\log L$ (erg s ⁻¹) | FWHM (km s ⁻¹) | σ (km s ⁻¹) | EW (Å) |
|-----------------------------------|---------------------------------|----------------------------|--------------------------------|------------------|
| H γ Narrow | 38.29 ± 0.08 | 149 ± 62 | 83 ± 32 | 3.28 ± 0.92 |
| Hγ Broad | — | — | — | — |
| [O III] 4364 | — | — | — | — |
| He II Narrow | — | — | — | — |
| He II Broad | 38.51 ± 0.17 | 2140 ± 62 | 909 ± 25 | 5.71 ± 1.18 |
| H β Narrow | 38.84 ± 0.02 | 149 ± 62 | 83 ± 32 | 12.50 ± 0.73 |
| Hβ Broad | — | — | — | — |
| [O III] 5007 | 38.46 ± 0.04 | 149 ± 62 | 83 ± 32 | 5.29 ± 0.69 |
| He I Narrow | 37.51 ± 0.34 | 145 ± 62 | 59 ± 25 | 0.68 ± 0.29 |
| He I Broad | 38.34 ± 0.17 | 1494 ± 62 | 634 ± 25 | 4.52 ± 1.70 |
| [O I] 6300 | 37.66 ± 0.16 | 145 ± 62 | 59 ± 25 | 1.01 ± 0.22 |
| H α Narrow | 39.33 ± 0.01 | 145 ± 62 | 59 ± 25 | 48.31 ± 0.26 |
| Hα Broad | — | — | — | — |
| [N II] 6585 | 38.80 ± 0.01 | 145 ± 62 | 59 ± 25 | 14.12 ± 0.23 |
| [S II] 6718 | 38.76 ± 0.01 | 145 ± 62 | 59 ± 25 | 13.08 ± 0.24 |
| [S II] 6732 | 38.59 ± 0.02 | 145 ± 62 | 59 ± 25 | 8.91 ± 0.22 |

Emission Summary

| | |
|------------------------------|-------|
| H α Broad SNR | 0.00 |
| H β Broad SNR | 0.00 |
| H γ Broad SNR | 0.00 |
| AGN frac | 0.43 |
| Host frac | 0.57 |
| $\log L_{5100, \text{Host}}$ | 41.56 |
| Fe II/H β | — |
| Fe II/[O III] | 3.55 |

Quality Flags

| | |
|------------------|-----|
| spurious_hab/hbb | 0/0 |
| 15100 | 2 |
| balmer | 2 |
| balmer_snr | 2 |
| hb_width | 2 |
| balmer_width | 2 |