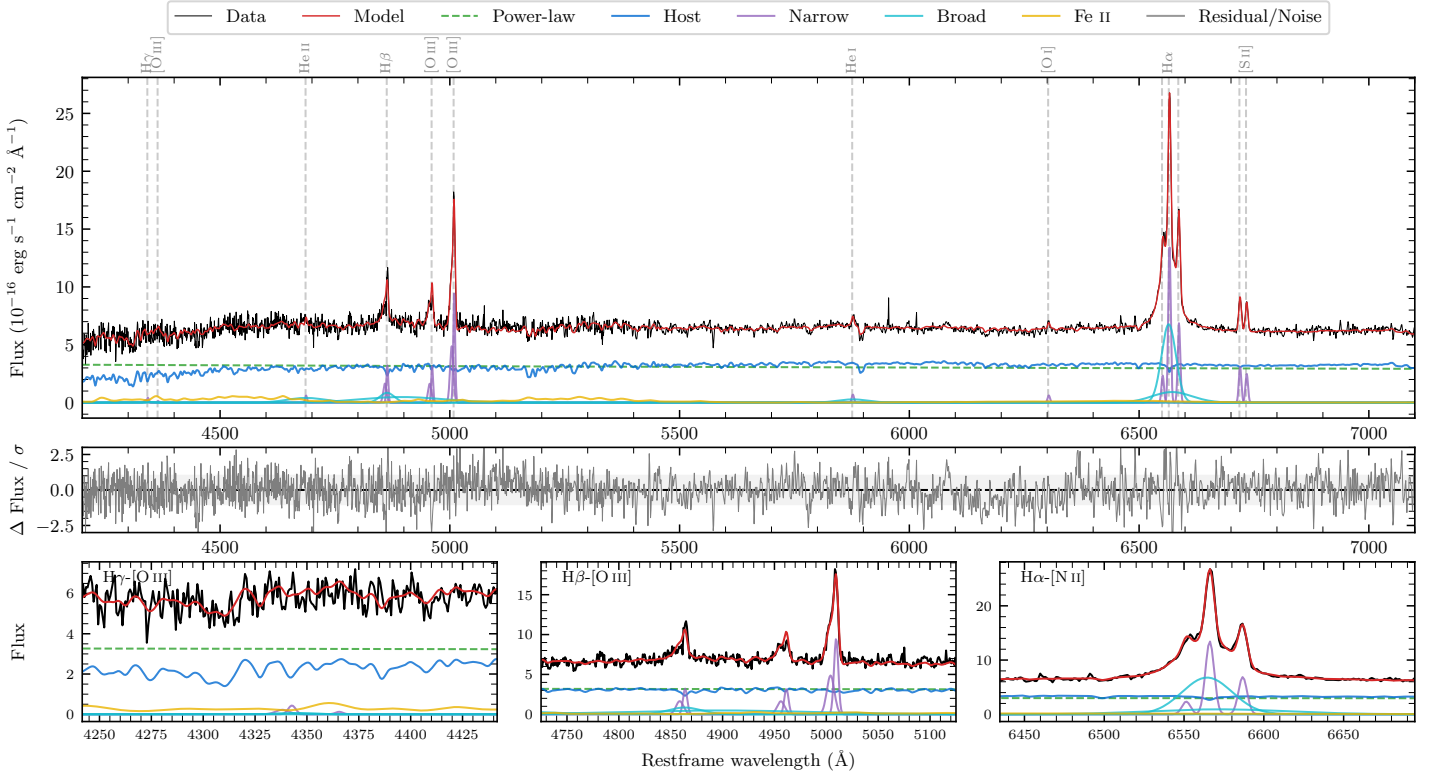
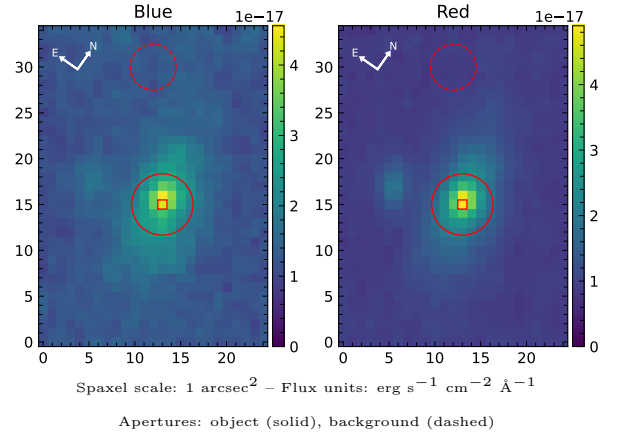


LEDA 981816

Spectrum ID	13624525_sp1	Spectrum Type	Sy 1.5
Alt name	g0110090-100844	Quality Flag	good
z	0.0585	AGN reference	6dFGS
RA, Dec	17.5375, -10.1455	MW $E(B - V)$	0.030
MJD	60225.59	Power law α_ν	-1.78 ± 0.15
SNR/Å B/R	14.8/26.9	$\log L_{5100, \text{AGN}}$	43.11 ± 0.02
Obs Airmass	1.07	$\log H\beta_{\text{Br}}/[\text{O III}]$	-0.45 ± 0.35
SMSS ID	13624525	$\log M_{L5100}/M_\odot$	7.23 ± 0.03
Closest SMSS	7.69", 13624526	$\log M_{\text{H}\alpha}/M_\odot$	6.72 ± 0.04
SMSS Mean r_{psf}	16.1 ± 0.1	$\log M_{\text{H}\beta}/M_\odot$	6.85 ± 0.18
2MASS K_{ext}	12.5 ± 0.1	$\log M_{[\text{O III}]} / M_\odot$	7.18 ± 0.04



Emission Line Measurements

Line	$\log L$ (erg s $^{-1}$)	FWHM (km s $^{-1}$)	σ (km s $^{-1}$)	EW (Å)
H γ Narrow	39.51 ± 0.27	410 ± 68	238 ± 26	1.22 ± 0.43
Hγ Broad	—	—	—	—
[O III] 4364	—	—	—	—
He II Narrow	39.41 ± 0.22	293 ± 63	124 ± 25	0.99 ± 0.30
He II Broad	—	—	—	—
H β Narrow	40.43 ± 0.04	410 ± 68	238 ± 25	10.30 ± 0.41
Hβ Broad	$40.46^{+0.63}_{-0.08}$	2268 ± 41	844 ± 25	11.10 ± 0.84
[O III] 5007	40.91 ± 0.01	410 ± 68	238 ± 25	31.50 ± 0.42
He I Narrow	39.57 ± 0.09	293 ± 63	124 ± 25	1.49 ± 0.20
He I Broad	40.29 ± 0.08	3923 ± 66	1666 ± 27	7.97 ± 0.81
[O I] 6300	39.55 ± 0.13	293 ± 63	124 ± 25	1.44 ± 0.22
H α Narrow	40.90 ± 0.01	293 ± 63	124 ± 25	32.59 ± 0.28
Hα Broad	41.50 ± 0.01	1822 ± 65	823 ± 26	130.07 ± 0.89
[N II] 6585	40.61 ± 0.01	293 ± 63	124 ± 25	16.73 ± 0.25
[S II] 6718	40.27 ± 0.02	293 ± 63	124 ± 25	7.74 ± 0.24
[S II] 6732	40.17 ± 0.02	293 ± 63	124 ± 25	6.23 ± 0.22

Emission Summary

H α Broad SNR	17.63
H β Broad SNR	1.95
H γ Broad SNR	0.35
AGN frac	0.52
Host frac	0.48
$\log L_{5100, \text{Host}}$	43.08
Fe II/H β	—
Fe II/[O III]	—

Quality Flags

spurious_hab/hbb	0/2
15100	0
balmer	1
balmer_snr	2
hb_width	0
balmer_width	0