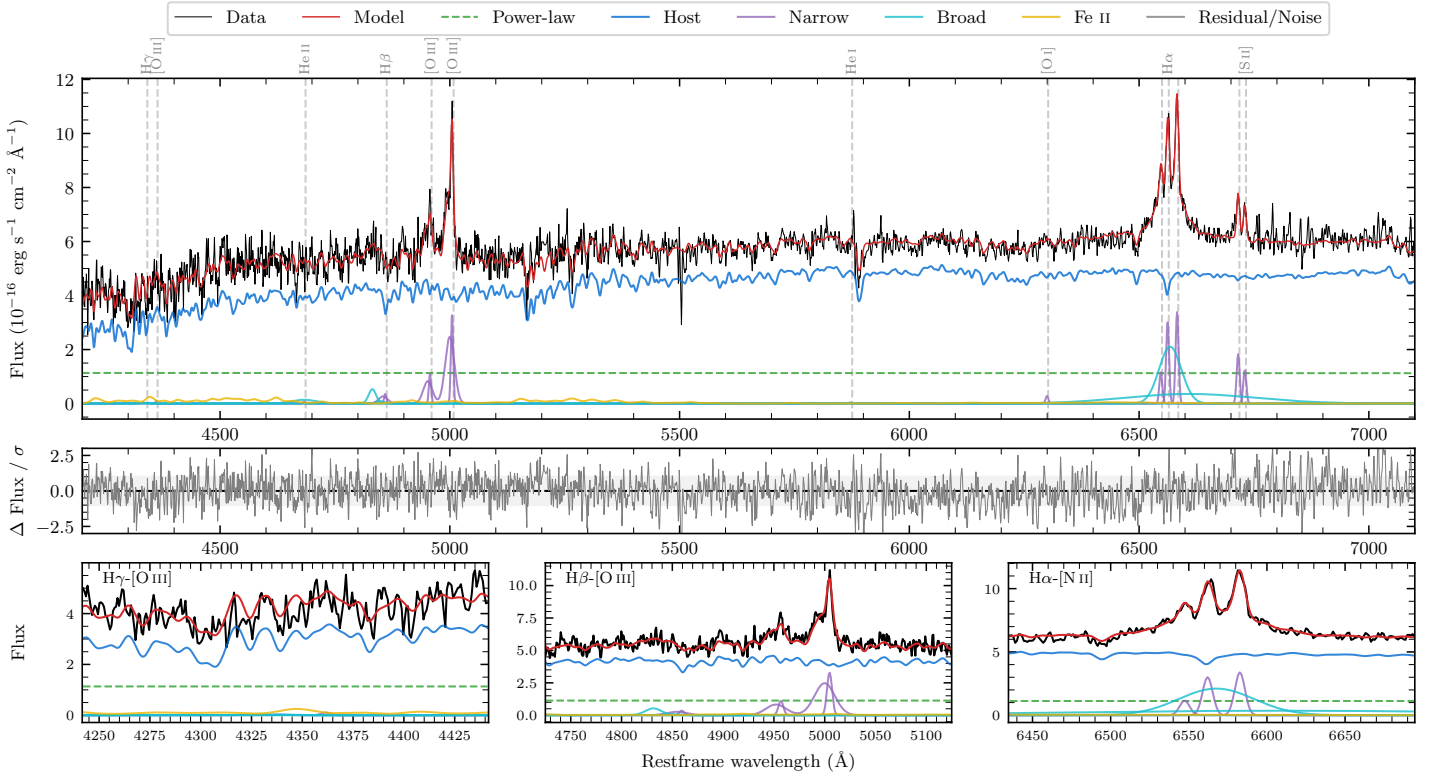
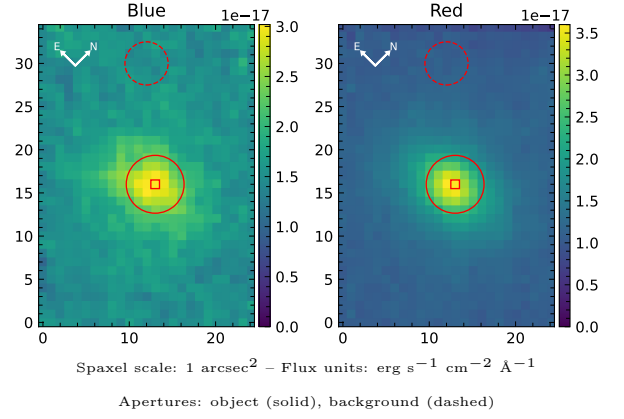


# LEDA 1081001

Spectrum ID	13873304_sp1	Spectrum Type	Sy 1.8
Alt name	g0102208-025212	Quality Flag	good
$z$	0.0709	AGN reference	6dFGS
RA, Dec	15.5866, -2.8699	MW $E(B - V)$	0.029
MJD	60209.62	Power law $\alpha_\nu$	$-1.99 \pm 0.02$
SNR/ $\text{\AA}$ B/R	12.3/24.7	$\log L_{5100, \text{AGN}}$	$42.86 \pm 0.03$
Obs Airmass	1.14	$\log H\beta_{\text{Br}}/[\text{O III}]$	$-0.81 \pm 0.12$
SMSS ID	13873304	$\log M_{L5100}/M_\odot$	$6.62 \pm 0.10$
Closest SMSS	None $< 15''$	$\log M_{\text{H}\alpha}/M_\odot$	$7.15 \pm 0.03$
SMSS Mean $r_{\text{psf}}$	$16.1 \pm 0.2$	$\log M_{\text{H}\beta}/M_\odot$	$6.24 \pm 0.12$
2MASS $K_{\text{ext}}$	$11.9 \pm 0.1$	$\log M_{[\text{O III}]} / M_\odot$	$6.74 \pm 0.10$



## Emission Line Measurements

Line	$\log L$ (erg s <sup>-1</sup> )	FWHM (km s <sup>-1</sup> )	$\sigma$ (km s <sup>-1</sup> )	EW (Å)
H $\gamma$ Narrow	–	–	–	–
<b>H<math>\gamma</math> Broad</b>	–	–	–	–
[O III] 4364	–	–	–	–
He II Narrow	–	–	–	–
He II Broad	$40.11 \pm 0.25$	$4103 \pm 62$	$1742 \pm 25$	$9.15 \pm 3.33$
H $\beta$ Narrow	$40.07 \pm 0.18$	$561 \pm 75$	$540 \pm 26$	$8.24 \pm 1.88$
<b>H<math>\beta</math> Broad</b>	<b><math>40.24 \pm 0.11</math></b>	<b><math>1268 \pm 139</math></b>	<b><math>372 \pm 56</math></b>	<b><math>12.02 \pm 1.93</math></b>
[O III] 5007	$41.04 \pm 0.02$	$561 \pm 75$	$541 \pm 26$	$78.09 \pm 2.01$
He I Narrow	–	–	–	–
He I Broad	–	–	–	–
[O I] 6300	$39.47 \pm 0.17$	$350 \pm 62$	$148 \pm 25$	$2.07 \pm 0.56$
H $\alpha$ Narrow	$40.51 \pm 0.02$	$350 \pm 62$	$148 \pm 25$	$23.21 \pm 0.68$
<b>H<math>\alpha</math> Broad</b>	<b><math>41.53 \pm 0.02</math></b>	<b><math>2906 \pm 72</math></b>	<b><math>2755 \pm 73</math></b>	<b><math>241.81 \pm 4.29</math></b>
[N II] 6585	$40.57 \pm 0.02$	$350 \pm 62$	$148 \pm 25$	$26.24 \pm 0.69$
[S II] 6718	$40.31 \pm 0.03$	$350 \pm 62$	$148 \pm 25$	$14.48 \pm 0.69$
[S II] 6732	$40.14 \pm 0.04$	$350 \pm 62$	$148 \pm 25$	$9.81 \pm 0.65$

## Emission Summary

H $\alpha$ Broad SNR	5.89
H $\beta$ Broad SNR	1.32
H $\gamma$ Broad SNR	0.00
AGN frac	0.22
Host frac	0.78
$\log L_{5100, \text{Host}}$	43.41
Fe II/H $\beta$	3.43
Fe II/[O III]	0.53

## Quality Flags

spurious_hab/hbb	0/0
15100	1
balmer	1
balmer_snr	2
hb_width	1
balmer_width	2