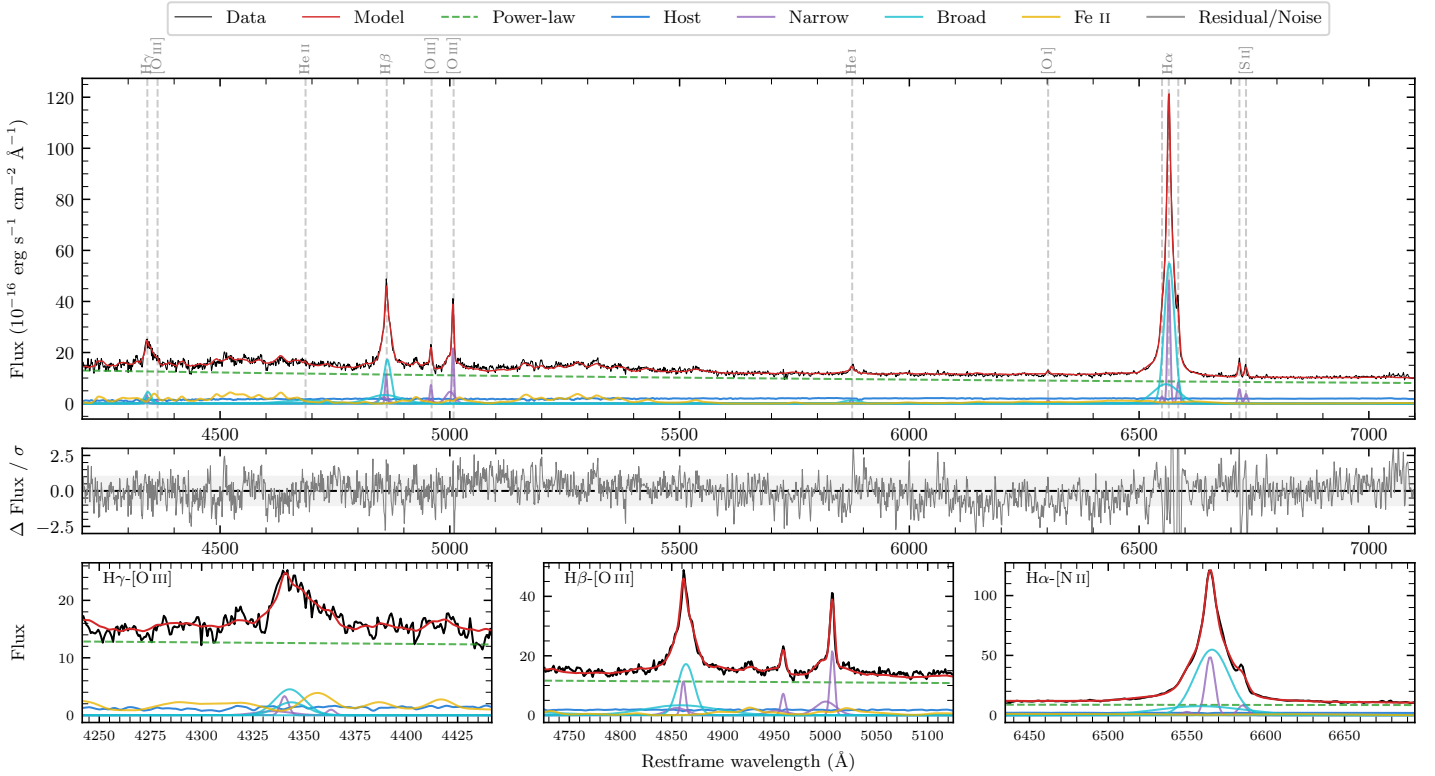
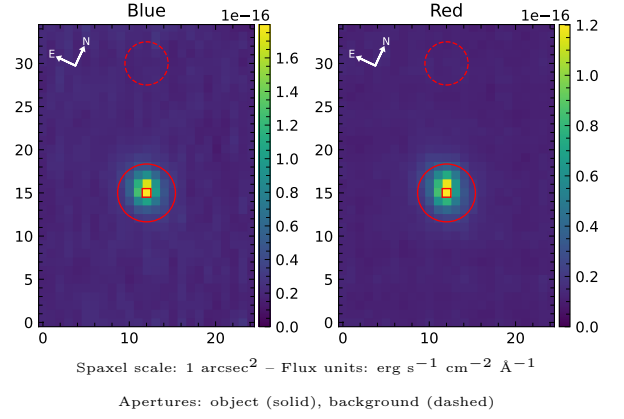


# LEDA 87392

Spectrum ID	503833007_sp1	Spectrum Type	Sy 1.2
Alt name	g0039159-511702	Quality Flag	good
$z$	0.0283	AGN reference	6dFGS
RA, Dec	9.8160, -51.2838	MW $E(B - V)$	0.011
MJD	60164.76	Power law $\alpha_\nu$	$-1.10 \pm 0.04$
SNR/ $\text{\AA}$ B/R	14.6/23.1	$\log L_{5100, \text{AGN}}$	$43.02 \pm 0.01$
Obs Airmass	1.07	$\log H\beta_{\text{Br}}/[\text{O III}]$	$0.43 \pm 0.02$
SMSS ID	503833007	$\log M_{L5100}/M_\odot$	$6.73 \pm 0.03$
Closest SMSS	None $< 15''$	$\log M_{H\alpha}/M_\odot$	$6.46 \pm 0.05$
SMSS Mean $r_{\text{psf}}$	$15.2 \pm 0.1$	$\log M_{H\beta}/M_\odot$	$6.68 \pm 0.04$
2MASS $K_{\text{ext}}$	$11.9 \pm 0.1$	$\log M_{[\text{O III}]} / M_\odot$	$6.60 \pm 0.05$



## Emission Line Measurements

Line	$\log L$ (erg s $^{-1}$ )	FWHM (km s $^{-1}$ )	$\sigma$ (km s $^{-1}$ )	EW ( $\text{\AA}$ )
H $\gamma$ Narrow	$39.79 \pm 0.16$	$366 \pm 63$	$469 \pm 26$	$2.62 \pm 0.49$
<b>H<math>\gamma</math> Broad</b>	<b><math>40.39 \pm 0.05</math></b>	<b><math>1192 \pm 63</math></b>	<b><math>434 \pm 25</math></b>	<b><math>10.19 \pm 0.46</math></b>
[O III] 4364	$38.97 \pm 0.33$	$324 \pm 63$	$137 \pm 25$	$0.40 \pm 0.22$
He II Narrow	$38.95 \pm 0.31$	$324 \pm 63$	$137 \pm 25$	$0.40 \pm 0.19$
He II Broad	$40.48 \pm 0.06$	$7404 \pm 69$	$3144 \pm 28$	$13.75 \pm 0.96$
H $\beta$ Narrow	$40.38 \pm 0.04$	$366 \pm 63$	$469 \pm 26$	$11.21 \pm 0.42$
<b>H<math>\beta</math> Broad</b>	<b><math>41.10 \pm 0.01</math></b>	<b><math>1337 \pm 29</math></b>	<b><math>910 \pm 28</math></b>	<b><math>58.69 \pm 0.81</math></b>
[O III] 5007	$40.66 \pm 0.01$	$366 \pm 63$	$469 \pm 26$	$22.29 \pm 0.42$
He I Narrow	$39.32 \pm 0.09$	$324 \pm 63$	$137 \pm 25$	$1.18 \pm 0.13$
He I Broad	$40.05 \pm 0.05$	$2131 \pm 74$	$905 \pm 30$	$6.35 \pm 0.37$
[O I] 6300	$39.26 \pm 0.09$	$324 \pm 63$	$137 \pm 25$	$1.09 \pm 0.14$
H $\alpha$ Narrow	$40.85 \pm 0.01$	$324 \pm 63$	$137 \pm 25$	$43.89 \pm 0.27$
<b>H<math>\alpha</math> Broad</b>	<b><math>41.59 \pm 0.01</math></b>	<b><math>1270 \pm 63</math></b>	<b><math>545 \pm 25</math></b>	<b><math>242.18 \pm 1.68</math></b>
[N II] 6585	$40.08 \pm 0.02$	$324 \pm 63$	$137 \pm 25$	$7.47 \pm 0.20$
[S II] 6718	$39.93 \pm 0.02$	$324 \pm 63$	$137 \pm 25$	$5.34 \pm 0.17$
[S II] 6732	$39.74 \pm 0.04$	$324 \pm 63$	$137 \pm 25$	$3.50 \pm 0.16$

## Emission Summary

H $\alpha$ Broad SNR	59.27
H $\beta$ Broad SNR	19.60
H $\gamma$ Broad SNR	6.58
AGN frac	0.87
Host frac	0.13
$\log L_{5100, \text{Host}}$	42.20
Fe II/H $\beta$	1.29
Fe II/[O III]	3.48

## Quality Flags

spurious_hab/hbb	0/0
15100	0
balmer	0
balmer_snr	0
hb_width	1
balmer_width	0