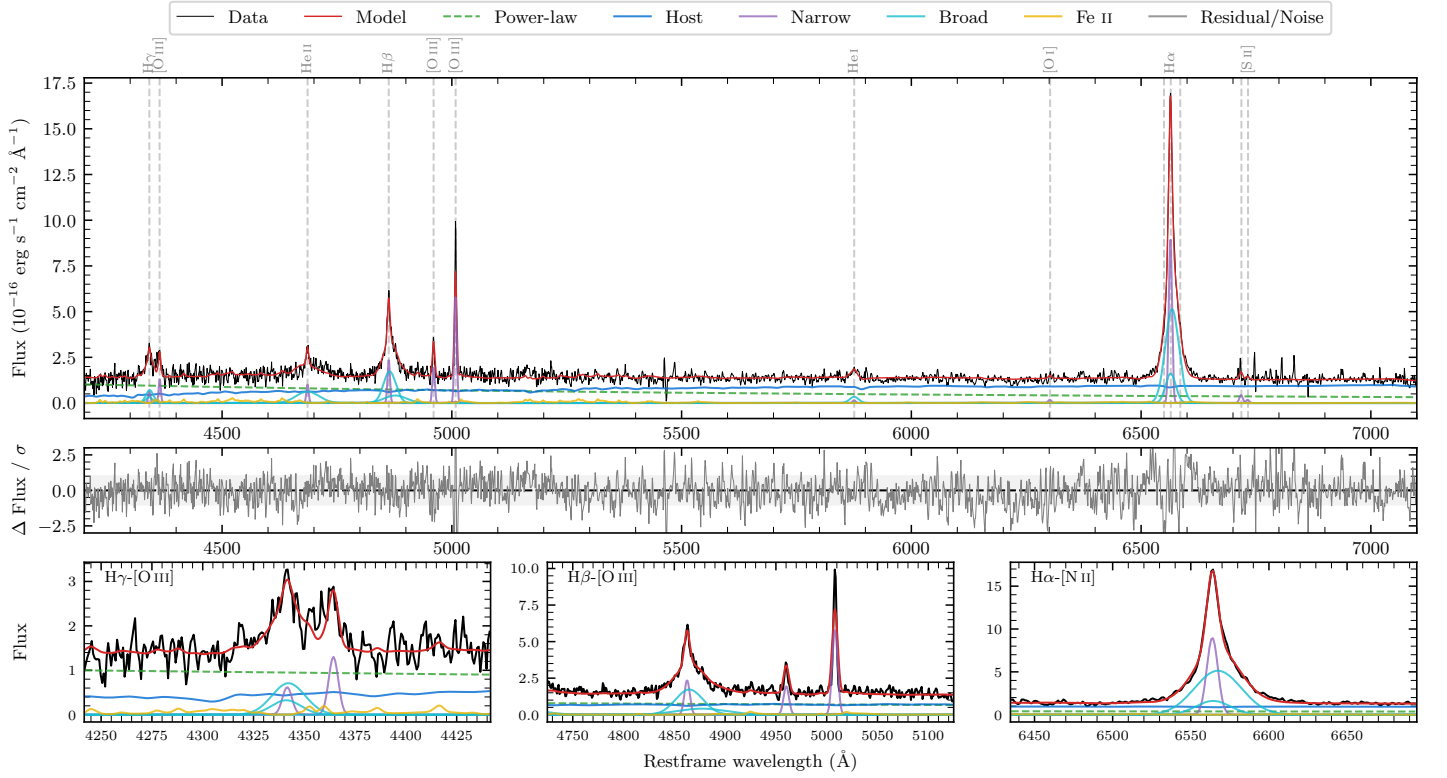
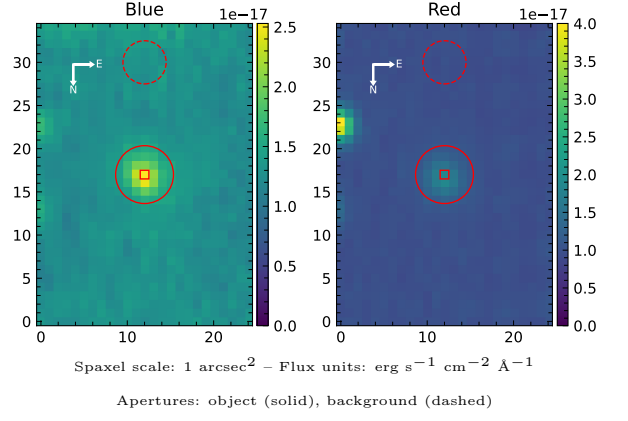


6dFGS gJ001521.6-150951

| | | | |
|----------------------------|-------------------|--|------------------|
| Spectrum ID | 11993144_sp1 | Spectrum Type | Sy 1.5 |
| Alt name | g0015216-150951 | Quality Flag | good |
| z | 0.0788 | AGN reference | 6dFGS |
| RA, Dec | 3.8401, -15.1642 | MW $E(B - V)$ | 0.021 |
| MJD | 60224.5 | Power law α_ν | 0.21 ± 0.29 |
| SNR/ \AA B/R | 5.5/8.1 | $\log L_{5100, \text{AGN}}$ | 42.72 ± 0.06 |
| Obs Airmass | 1.10 | $\log H\beta_{\text{Br}}/[\text{O III}]$ | 0.29 ± 0.03 |
| SMSS ID | 11993144 | $\log M_{L5100}/M_\odot$ | 6.98 ± 0.08 |
| Closest SMSS | 2.79", 2021209279 | $\log M_{\text{H}\alpha}/M_\odot$ | 6.61 ± 0.06 |
| SMSS Mean r_{psf} | 18.2 ± 0.1 | $\log M_{\text{H}\beta}/M_\odot$ | 7.07 ± 0.08 |
| 2MASS K_{ext} | nan \pm nan | $\log M_{[\text{O III}]} / M_\odot$ | 7.06 ± 0.08 |



Emission Line Measurements

| Line | $\log L$ (erg s ⁻¹) | FWHM (km s ⁻¹) | σ (km s ⁻¹) | EW (Å) |
|-----------------------------------|------------------------------------|----------------------------------|--------------------------------|-------------------------------------|
| H γ Narrow | 39.79 ± 0.23 | 386 ± 66 | 195 ± 37 | 4.30 ± 1.51 |
| Hγ Broad | 40.58 ± 0.07 | 1304 ± 101 | 458 ± 36 | 23.25 ± 1.66 |
| [O III] 4364 | 40.10 ± 0.09 | 382 ± 66 | 162 ± 27 | 8.85 ± 0.91 |
| He II Narrow | 40.02 ± 0.09 | 382 ± 66 | 162 ± 27 | 8.61 ± 1.01 |
| He II Broad | 40.79 ± 0.05 | 3731 ± 153 | 1584 ± 64 | 52.59 ± 2.95 |
| H β Narrow | 40.43 ± 0.06 | 386 ± 66 | 195 ± 37 | 23.54 ± 1.74 |
| Hβ Broad | 41.12 ± 0.02 | 2069 ± 166 | 865 ± 62 | 121.89 ± 3.06 |
| [O III] 5007 | 40.83 ± 0.02 | 386 ± 66 | 195 ± 37 | 63.49 ± 2.00 |
| He I Narrow | 39.31 ± 0.35 | 382 ± 66 | 162 ± 27 | 2.76 ± 1.05 |
| He I Broad | 40.15 ± 0.10 | 1184 ± 65 | 503 ± 26 | 18.58 ± 2.29 |
| [O I] 6300 | 39.41 ± 0.18 | 382 ± 66 | 162 ± 27 | 4.05 ± 1.02 |
| H α Narrow | 41.12 ± 0.04 | 382 ± 66 | 162 ± 27 | 226.15 ± 1.66 |
| Hα Broad | 41.59 ± 0.02 | 1499 ± 106 | 558 ± 29 | 670.42 ± 2.90 |
| [N II] 6585 | – | – | – | – |
| [S II] 6718 | 39.81 ± 0.16 | 382 ± 66 | 162 ± 27 | 11.88 ± 2.20 |
| [S II] 6732 | 39.42 ± 0.20 | 382 ± 66 | 162 ± 27 | 4.83 ± 2.04 |

Emission Summary

| | |
|------------------------------|-------|
| H α Broad SNR | 23.91 |
| H β Broad SNR | 7.53 |
| H γ Broad SNR | 3.85 |
| AGN frac | 0.49 |
| Host frac | 0.51 |
| $\log L_{5100, \text{Host}}$ | 42.73 |
| Fe II/H β | 0.38 |
| Fe II/[O III] | 0.78 |

Quality Flags

| | |
|------------------|-----|
| spurious_hab/hbb | 0/0 |
| 15100 | 1 |
| balmer | 0 |
| balmer_snr | 0 |
| hb_width | 0 |
| balmer_width | 0 |