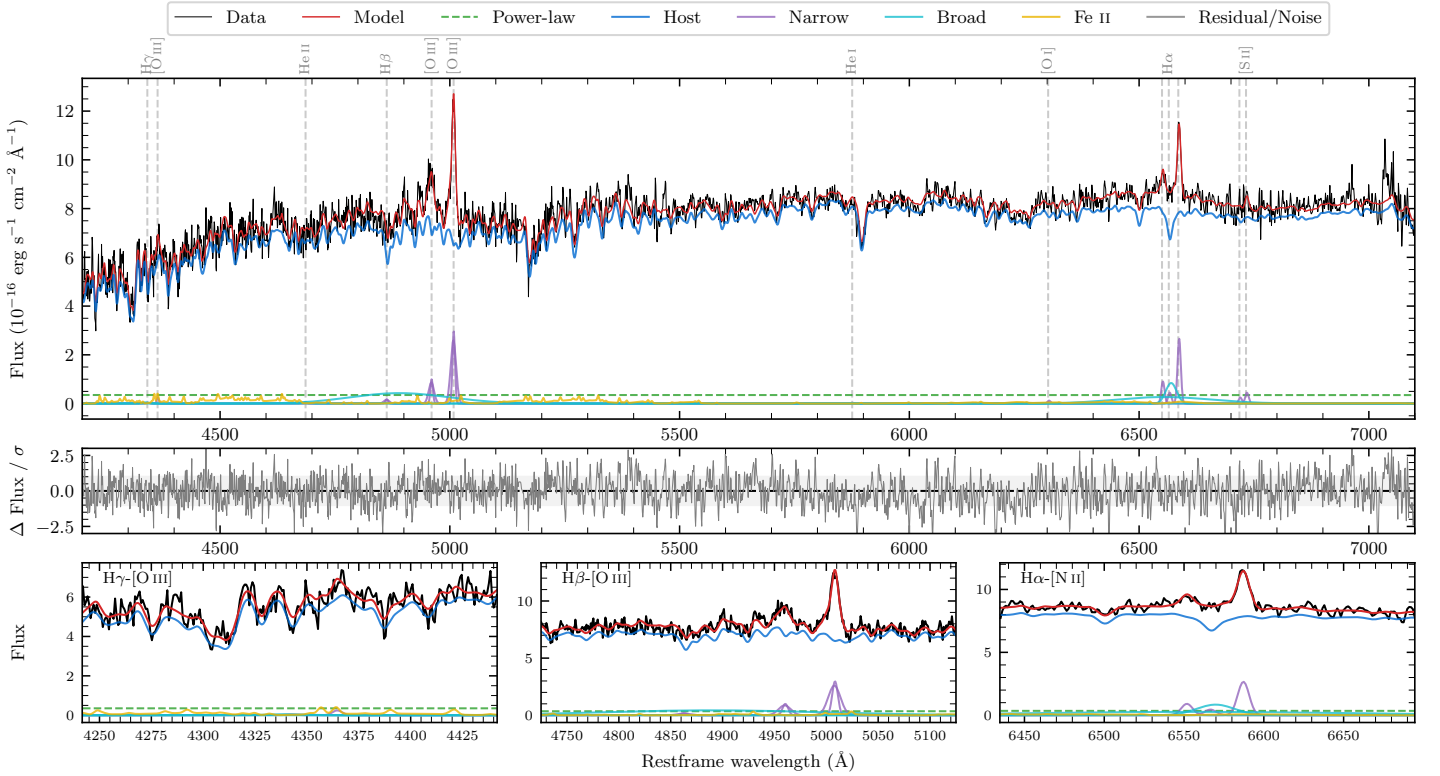
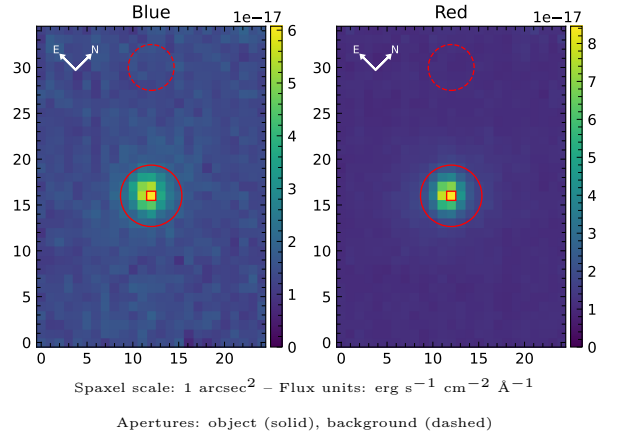


LEDA 1034652

Spectrum ID	13091533_sp1	Spectrum Type	Sy 1.5
Alt name	g0010200-061706	Quality Flag	good
z	0.0820	AGN reference	6dFGS
RA, Dec	2.5832, -6.2849	MW $E(B - V)$	0.028
MJD	60225.45	Power law α_ν	-1.98 ± 0.02
SNR/Å B/R	16.6/29.0	$\log L_{5100, \text{AGN}}$	42.47 ± 0.15
Obs Airmass	1.31	$\log H\beta_{\text{Br}} / [\text{O III}]$	0.30 ± 0.06
SMSS ID	13091533	$\log M_{L5100} / M_\odot$	8.62 ± 0.07
Closest SMSS	None $< 15''$	$\log M_{\text{H}\alpha} / M_\odot$	6.43 ± 0.07
SMSS Mean r_{psf}	16.3 ± 0.1	$\log M_{\text{H}\beta} / M_\odot$	8.90 ± 0.04
2MASS K_{ext}	12.4 ± 0.1	$\log M_{[\text{O III}]} / M_\odot$	8.90 ± 0.03



Emission Line Measurements

Line	$\log L$ (erg s ⁻¹)	FWHM (km s ⁻¹)	σ (km s ⁻¹)	EW (Å)
H γ Narrow	–	–	–	–
Hγ Broad	–	–	–	–
[O III] 4364	39.42 ± 0.42	385 ± 62	163 ± 25	4.46 ± 3.46
He II Narrow	–	–	–	–
He II Broad	–	–	–	–
H β Narrow	39.79 ± 0.30	533 ± 64	303 ± 25	10.75 ± 4.61
Hβ Broad	41.32 ± 0.06	15420 ± 249	5669 ± 25	356.50 ± 24.43
[O III] 5007	41.02 ± 0.02	533 ± 64	303 ± 25	181.03 ± 5.27
He I Narrow	–	–	–	–
He I Broad	–	–	–	–
[O I] 6300	39.28 ± 0.40	385 ± 62	163 ± 25	3.28 ± 2.34
H α Narrow	39.86 ± 0.22	385 ± 62	163 ± 25	12.58 ± 2.75
Hα Broad	41.23 ± 0.05	1566 ± 101	3036 ± 95	294.33 ± 14.95
[N II] 6585	40.63 ± 0.03	385 ± 62	163 ± 25	74.10 ± 2.74
[S II] 6718	39.61 ± 0.25	385 ± 62	163 ± 25	7.05 ± 3.25
[S II] 6732	39.87 ± 0.18	385 ± 62	163 ± 25	12.80 ± 3.25

Emission Summary

H α Broad SNR	2.51
H β Broad SNR	1.02
H γ Broad SNR	0.00
AGN frac	0.05
Host frac	0.95
$\log L_{5100, \text{Host}}$	43.77
Fe II/H β	0.43
Fe II/[O III]	0.85

Quality Flags

spurious_hab/hbb	0/0
15100	2
balmer	2
balmer_snr	2
hb_width	0
balmer_width	1