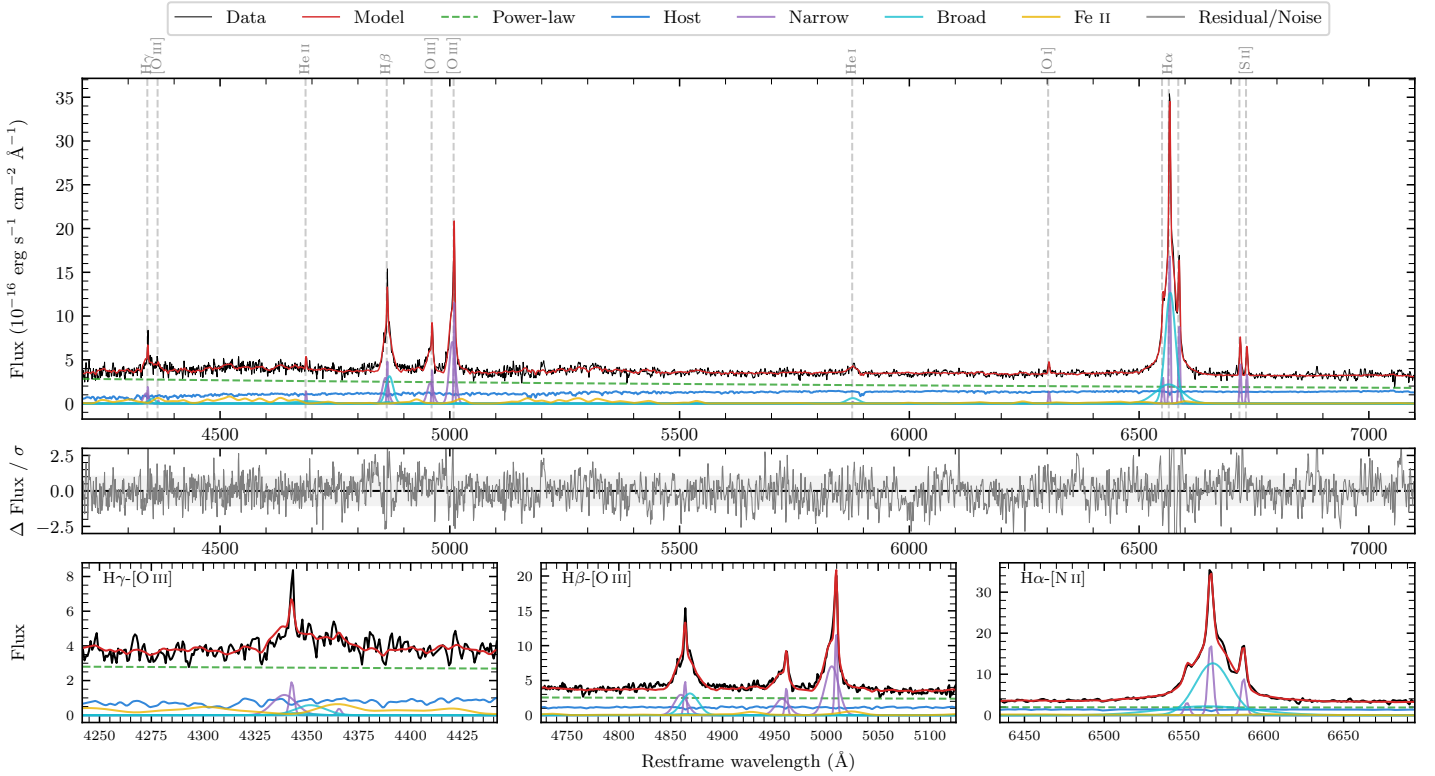
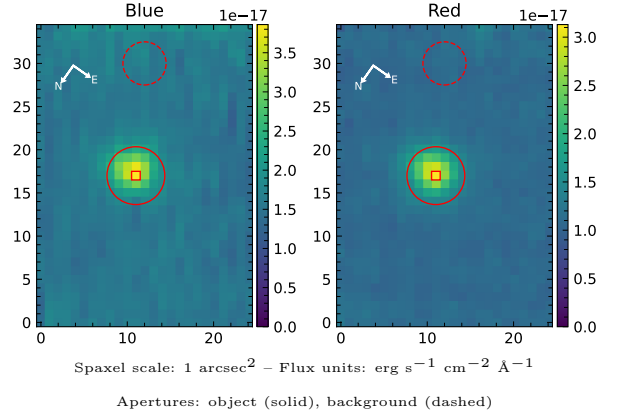


# FIRST J00040.2-054101

Spectrum ID	13084102_sp1	Spectrum Type	Sy 1.5
Alt name	g0000403-054101	Quality Flag	good
$z$	0.0942	AGN reference	6dFGS
RA, Dec	0.1678, -5.6836	MW $E(B - V)$	0.029
MJD	60206.53	Power law $\alpha_\nu$	$-1.13 \pm 0.21$
SNR/ $\text{\AA}$ B/R	10.0/13.9	$\log L_{5100, \text{AGN}}$	$43.43 \pm 0.02$
Obs Airmass	1.21	$\log H\beta_{\text{Br}}/[\text{O III}]$	$-0.34 \pm 0.03$
SMSS ID	13084102	$\log M_{L5100}/M_\odot$	$6.82 \pm 0.03$
Closest SMSS	4.25", 2024364467	$\log M_{\text{H}\alpha}/M_\odot$	$6.79 \pm 0.04$
SMSS Mean $r_{\text{psf}}$	$16.9 \pm 0.1$	$\log M_{\text{H}\beta}/M_\odot$	$6.64 \pm 0.04$
2MASS $K_{\text{ext}}$	$13.1 \pm 0.1$	$\log M_{[\text{O III}]} / M_\odot$	$6.95 \pm 0.02$



## Emission Line Measurements

Line	$\log L$ (erg s $^{-1}$ )	FWHM (km s $^{-1}$ )	$\sigma$ (km s $^{-1}$ )	EW ( $\text{\AA}$ )
H $\gamma$ Narrow	$40.73 \pm 0.06$	$260 \pm 63$	$363 \pm 25$	$8.83 \pm 0.66$
<b>H<math>\gamma</math> Broad</b>	<b><math>40.54 \pm 0.12</math></b>	<b><math>1274 \pm 100</math></b>	<b><math>411 \pm 29</math></b>	<b><math>5.19 \pm 0.77</math></b>
[O III] 4364	$39.41 \pm 0.37$	$185 \pm 62$	$76 \pm 25$	$0.42 \pm 0.26$
He II Narrow	$40.01 \pm 0.11$	$185 \pm 62$	$76 \pm 25$	$1.79 \pm 0.28$
He II Broad	$40.71 \pm 0.11$	$4372 \pm 67$	$1857 \pm 27$	$9.04 \pm 1.34$
H $\beta$ Narrow	$41.18 \pm 0.03$	$260 \pm 63$	$363 \pm 25$	$27.40 \pm 0.71$
<b>H<math>\beta</math> Broad</b>	<b><math>41.23 \pm 0.03</math></b>	<b><math>1199 \pm 30</math></b>	<b><math>413 \pm 25</math></b>	<b><math>30.21 \pm 0.85</math></b>
[O III] 5007	$41.57 \pm 0.01$	$260 \pm 63$	$363 \pm 25$	$69.31 \pm 0.77$
He I Narrow	$39.22 \pm 0.36$	$185 \pm 62$	$76 \pm 25$	$0.36 \pm 0.21$
He I Broad	$40.70 \pm 0.05$	$1570 \pm 65$	$666 \pm 26$	$10.61 \pm 0.73$
[O I] 6300	$40.12 \pm 0.06$	$185 \pm 62$	$76 \pm 25$	$3.00 \pm 0.26$
H $\alpha$ Narrow	$41.25 \pm 0.01$	$185 \pm 62$	$76 \pm 25$	$41.86 \pm 0.45$
<b>H<math>\alpha</math> Broad</b>	<b><math>42.09 \pm 0.01</math></b>	<b><math>1296 \pm 63</math></b>	<b><math>596 \pm 25</math></b>	<b><math>290.50 \pm 1.32</math></b>
[N II] 6585	$40.96 \pm 0.01$	$185 \pm 62$	$76 \pm 25$	$21.56 \pm 0.30$
[S II] 6718	$40.67 \pm 0.02$	$185 \pm 62$	$76 \pm 25$	$11.09 \pm 0.36$
[S II] 6732	$40.54 \pm 0.02$	$185 \pm 62$	$76 \pm 25$	$8.41 \pm 0.38$

## Emission Summary

H $\alpha$ Broad SNR	37.88
H $\beta$ Broad SNR	8.53
H $\gamma$ Broad SNR	1.83
AGN frac	0.68
Host frac	0.32
$\log L_{5100, \text{Host}}$	43.10
Fe II/H $\beta$	1.92
Fe II/[O III]	0.86

## Quality Flags

spurious_hab/hbb	0/0
15100	0
balmer	0
balmer_snr	1
hb_width	0
balmer_width	1