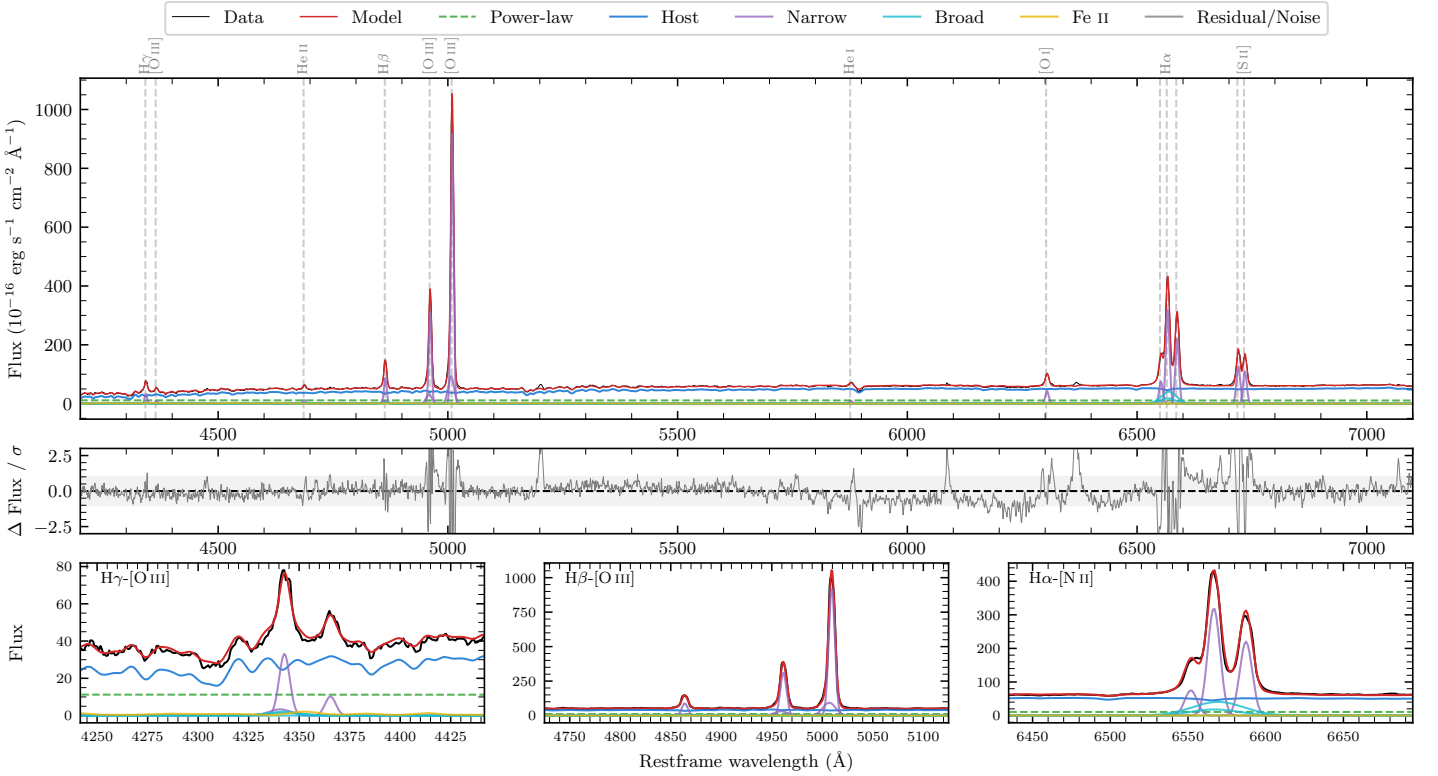
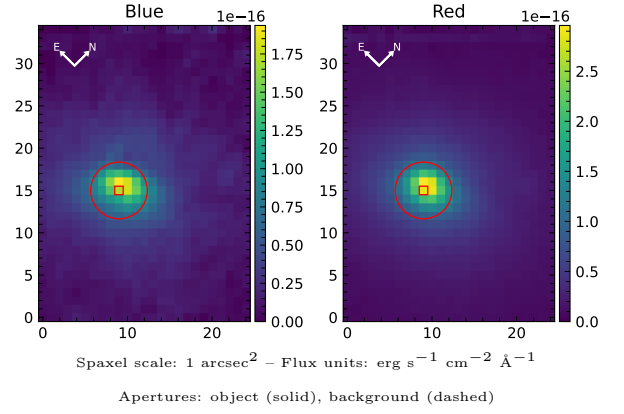


# IC 5063

Spectrum ID	486239887_sp1	Spectrum Type	Sy 2
Alt name	IC5063	Quality Flag	good
$z$	0.0115	AGN reference	S7
RA, Dec	313.0092, -57.0688	MW $E(B - V)$	0.053
MJD	60910.48	Power law $\alpha_\nu$	$-1.90 \pm 0.10$
SNR/ $\text{\AA}$ B/R	13.3/26.1	$\log L_{5100, \text{AGN}}$	$42.21 \pm 0.05$
Obs Airmass	1.14	$\log H\beta_{\text{Br}}/[\text{O III}]$	—
SMSS ID	486239887	$\log M_{L5100}/M_\odot$	—
Closest SMSS	None $< 15''$	$\log M_{\text{H}\alpha}/M_\odot$	—
SMSS Mean $r_{\text{psf}}$	$13.1 \pm 0.1$	$\log M_{\text{H}\beta}/M_\odot$	—
2MASS $K_{\text{ext}}$	$8.8 \pm 0.0$	$\log M_{[\text{O III}]} / M_\odot$	—



## Emission Line Measurements

Line	$\log L$ (erg s <sup>-1</sup> )	FWHM (km s <sup>-1</sup> )	$\sigma$ (km s <sup>-1</sup> )	EW (Å)
H $\gamma$ Narrow	$39.89 \pm 0.06$	$450 \pm 62$	$238 \pm 29$	$23.74 \pm 1.52$
<b>H<math>\gamma</math> Broad</b>	<b><math>39.44 \pm 0.26</math></b>	<b><math>1285 \pm 111</math></b>	<b><math>457 \pm 42</math></b>	<b><math>6.53 \pm 1.87</math></b>
[O III] 4364	$39.29 \pm 0.14$	$426 \pm 63$	$181 \pm 25$	$6.12 \pm 1.07$
He II Narrow	$39.41 \pm 0.10$	$426 \pm 63$	$181 \pm 25$	$8.17 \pm 0.86$
He II Broad	$39.54 \pm 0.20$	$3407 \pm 86$	$1447 \pm 35$	$11.10 \pm 2.48$
H $\beta$ Narrow	$40.36 \pm 0.02$	$450 \pm 62$	$238 \pm 29$	$71.90 \pm 1.35$
<b>H<math>\beta</math> Broad</b>	<b><math>39.72 \pm 0.13</math></b>	<b><math>1252 \pm 66</math></b>	<b><math>461 \pm 32</math></b>	<b><math>14.60 \pm 1.54</math></b>
[O III] 5007	$41.39 \pm 0.01$	$450 \pm 62$	$238 \pm 29$	$774.55 \pm 2.03$
He I Narrow	$39.40 \pm 0.08$	$426 \pm 63$	$181 \pm 25$	$8.07 \pm 0.78$
He I Broad	$38.81 \pm 0.46$	$1229 \pm 70$	$522 \pm 28$	$2.03 \pm 1.30$
[O I] 6300	$40.08 \pm 0.02$	$426 \pm 63$	$181 \pm 25$	$38.87 \pm 0.81$
H $\alpha$ Narrow	$41.10 \pm 0.01$	$426 \pm 63$	$181 \pm 25$	$298.28 \pm 1.18$
<b>H<math>\alpha</math> Broad</b>	—	—	—	—
[N II] 6585	$40.94 \pm 0.01$	$426 \pm 63$	$181 \pm 25$	$206.02 \pm 1.06$
[S II] 6718	$40.57 \pm 0.01$	$426 \pm 63$	$181 \pm 25$	$121.38 \pm 0.90$
[S II] 6732	$40.50 \pm 0.01$	$426 \pm 63$	$181 \pm 25$	$104.82 \pm 0.89$

## Emission Summary

H $\alpha$ Broad SNR	0.00
H $\beta$ Broad SNR	0.00
H $\gamma$ Broad SNR	0.00
AGN frac	0.22
Host frac	0.78
$\log L_{5100, \text{Host}}$	42.76
Fe II/H $\beta$	—
Fe II/[O III]	0.04

## Quality Flags

spurious_hab/hbb	1/0
15100	1
balmer	2
balmer_snr	2
hb_width	0
balmer_width	2