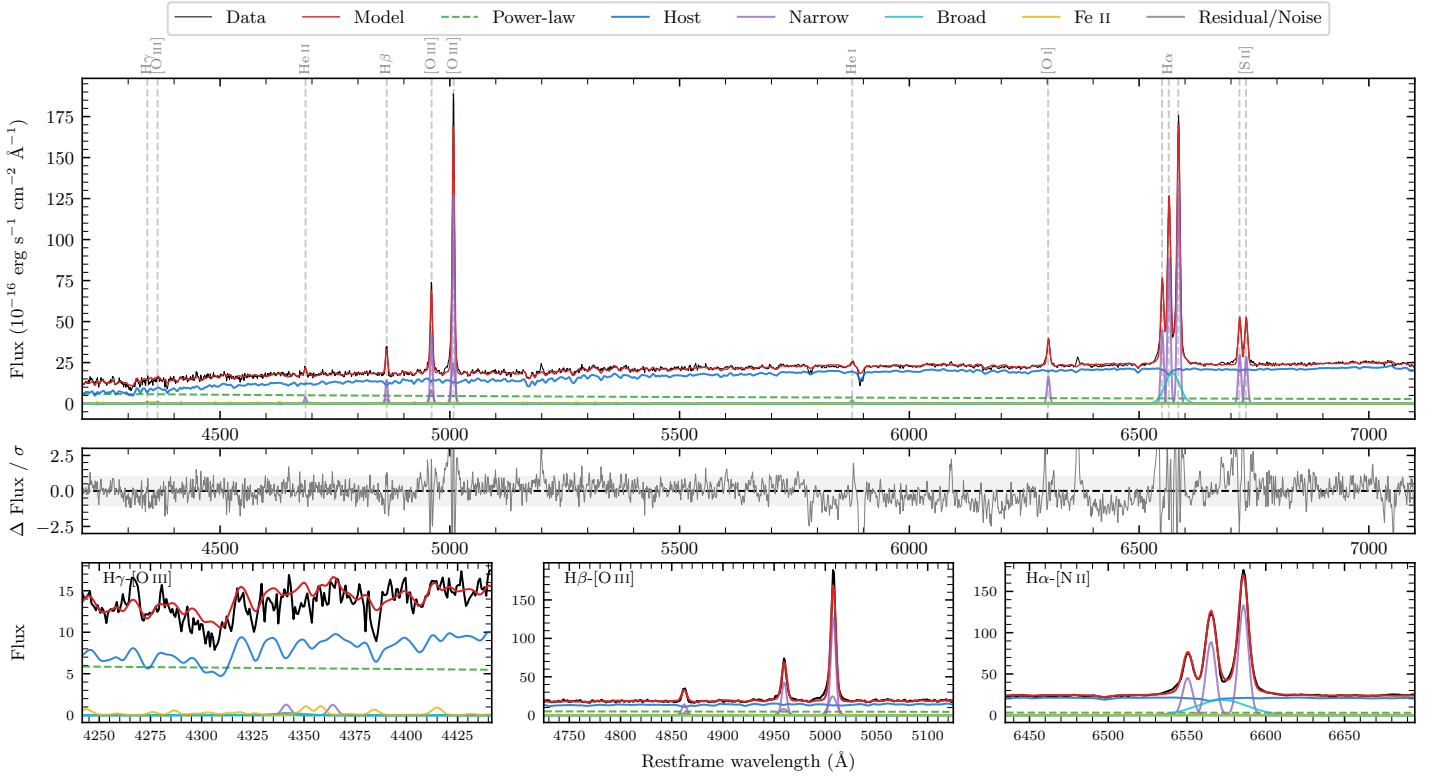
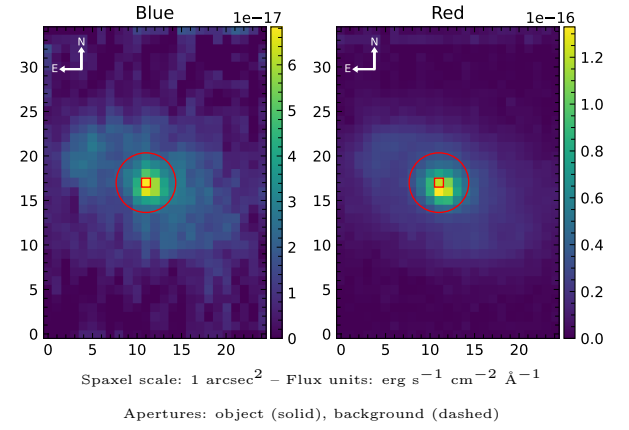


MCG-06-43-014

Spectrum ID	232929918_sp1	Spectrum Type	SF
Alt name	ESO339-G11	Quality Flag	good
z	0.0191	AGN reference	S7
RA, Dec	299.4062, -37.9356	MW $E(B - V)$	0.090
MJD	60905.46	Power law α_ν	-0.53 ± 0.39
SNR/ \AA B/R	10.6/26.2	$\log L_{5100, \text{AGN}}$	42.28 ± 0.08
Obs Airmass	1.03	$\log H\beta_{\text{Br}}/[\text{O III}]$	—
SMSS ID	232929918	$\log M_{L5100}/M_\odot$	—
Closest SMSS	8.24", 2334983252	$\log M_{\text{H}\alpha}/M_\odot$	—
SMSS Mean r_{psf}	14.7 ± 0.2	$\log M_{\text{H}\beta}/M_\odot$	—
2MASS K_{ext}	10.0 ± 0.0	$\log M_{[\text{O III}]} / M_\odot$	—



Emission Line Measurements

Line	$\log L$ (erg s $^{-1}$)	FWHM (km s $^{-1}$)	σ (km s $^{-1}$)	EW (\AA)
H γ Narrow	38.88 ± 0.37	366 ± 63	173 ± 25	1.60 ± 1.03
Hγ Broad	—	—	—	—
[O III] 4364	38.75 ± 0.42	340 ± 62	144 ± 25	1.21 ± 0.83
He II Narrow	39.28 ± 0.18	340 ± 62	144 ± 25	4.49 ± 0.80
He II Broad	39.16 ± 0.38	1188 ± 63	504 ± 25	3.40 ± 1.39
H β Narrow	39.98 ± 0.04	366 ± 63	173 ± 25	23.51 ± 0.98
Hβ Broad	—	—	—	—
[O III] 5007	40.94 ± 0.01	366 ± 63	173 ± 25	224.88 ± 1.27
He I Narrow	39.13 ± 0.12	340 ± 62	144 ± 25	4.41 ± 0.63
He I Broad	—	—	—	—
[O I] 6300	40.03 ± 0.02	340 ± 62	144 ± 25	39.17 ± 0.80
H α Narrow	40.91 ± 0.01	340 ± 62	144 ± 25	232.67 ± 1.18
Hα Broad	—	—	—	—
[N II] 6585	41.09 ± 0.01	340 ± 62	144 ± 25	349.98 ± 1.22
[S II] 6718	40.31 ± 0.01	340 ± 62	144 ± 25	82.64 ± 1.01
[S II] 6732	40.30 ± 0.01	340 ± 62	144 ± 25	79.99 ± 1.05

Emission Summary

H α Broad SNR	0.00
H β Broad SNR	0.00
H γ Broad SNR	0.00
AGN frac	0.25
Host frac	0.75
$\log L_{5100, \text{Host}}$	42.76
Fe II/H β	—
Fe II/[O III]	0.09

Quality Flags

spurious_hab/hbb	1/0
15100	1
balmer	2
balmer_snr	2
hb_width	2
balmer_width	2