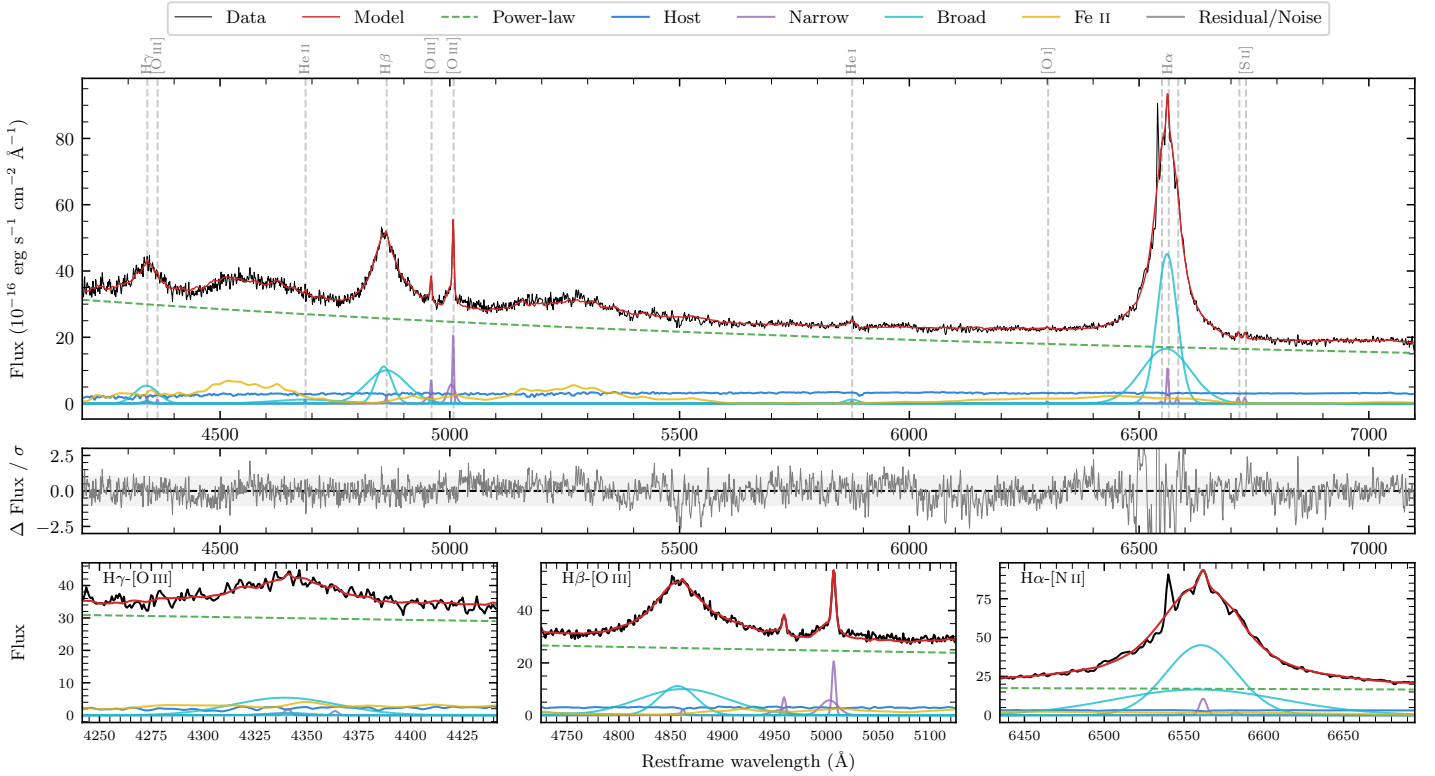
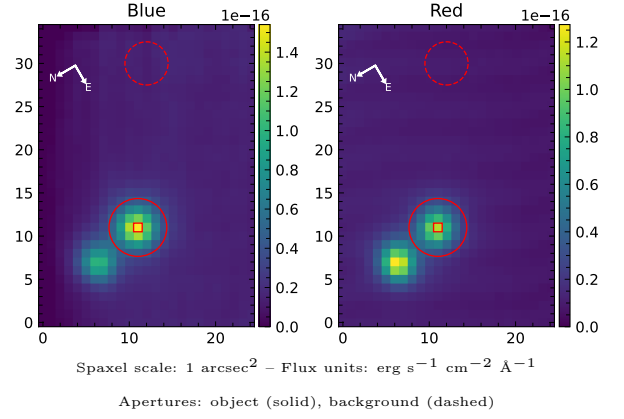


5778852799983279744

Spectrum ID	408140206_sp1	Spectrum Type	Sy 1.0
Alt name	5778852799983279744	Quality Flag	good
z	0.0718	AGN reference	AIBRICQS
RA, Dec	244.7576, -78.5437	MW $E(B - V)$	0.146
MJD	59649.75	Power law α_ν	-0.63 ± 0.05
SNR/ \AA B/R	18.5/26.5	$\log L_{5100, \text{AGN}}$	44.19 ± 0.01
Obs Airmass	1.49	$\log H\beta_{\text{Br}} / [\text{O III}]$	0.88 ± 0.03
SMSS ID	408140206	$\log M_{L5100} / M_\odot$	8.13 ± 0.03
Closest SMSS	$5.94''$, 408140208	$\log M_{\text{H}\alpha} / M_\odot$	7.90 ± 0.04
SMSS Mean r_{psf}	14.7 ± 0.0	$\log M_{\text{H}\beta} / M_\odot$	8.13 ± 0.03
2MASS K_{ext}	nan \pm nan	$\log M_{[\text{O III}]} / M_\odot$	7.88 ± 0.04



Emission Line Measurements

Line	$\log L$ (erg s $^{-1}$)	FWHM (km s $^{-1}$)	σ (km s $^{-1}$)	EW (\AA)
H γ Narrow	40.38 ± 0.29	287 ± 64	405 ± 28	0.63 ± 0.30
Hγ Broad	41.70 ± 0.04	3747 ± 339	1475 ± 51	12.98 ± 0.60
[O III] 4364	39.83 ± 0.40	245 ± 63	103 ± 25	0.18 ± 0.13
He II Narrow	39.85 ± 0.35	245 ± 63	103 ± 25	0.21 ± 0.13
He II Broad	41.48 ± 0.08	10942 ± 109	4646 ± 45	8.89 ± 0.91
H β Narrow	40.46 ± 0.24	287 ± 64	405 ± 28	0.88 ± 0.29
Hβ Broad	42.33 ± 0.01	3729 ± 137	1838 ± 39	66.60 ± 0.74
[O III] 5007	41.45 ± 0.02	287 ± 64	405 ± 28	9.11 ± 0.33
He I Narrow	39.80 ± 0.30	245 ± 63	103 ± 25	0.25 ± 0.10
He I Broad	40.80 ± 0.08	1797 ± 85	763 ± 35	2.53 ± 0.26
[O I] 6300	39.70 ± 0.28	245 ± 63	103 ± 25	0.22 ± 0.10
H α Narrow	40.92 ± 0.03	245 ± 63	103 ± 25	3.87 ± 0.15
Hα Broad	42.80 ± 0.01	2825 ± 64	1334 ± 25	295.63 ± 0.66
[N II] 6585	40.14 ± 0.16	245 ± 63	103 ± 25	0.66 ± 0.13
[S II] 6718	40.15 ± 0.14	245 ± 63	103 ± 25	0.68 ± 0.15
[S II] 6732	40.15 ± 0.12	245 ± 63	103 ± 25	0.68 ± 0.12

Emission Summary

H α Broad SNR	37.53
H β Broad SNR	12.84
H γ Broad SNR	3.85
AGN frac	0.90
Host frac	0.10
$\log L_{5100, \text{Host}}$	43.25
Fe II/H β	0.95
Fe II/[O III]	7.26

Quality Flags

spurious_hab/hbb	0/0
15100	0
balmer	0
balmer_snr	0
hb_width	0
balmer_width	0