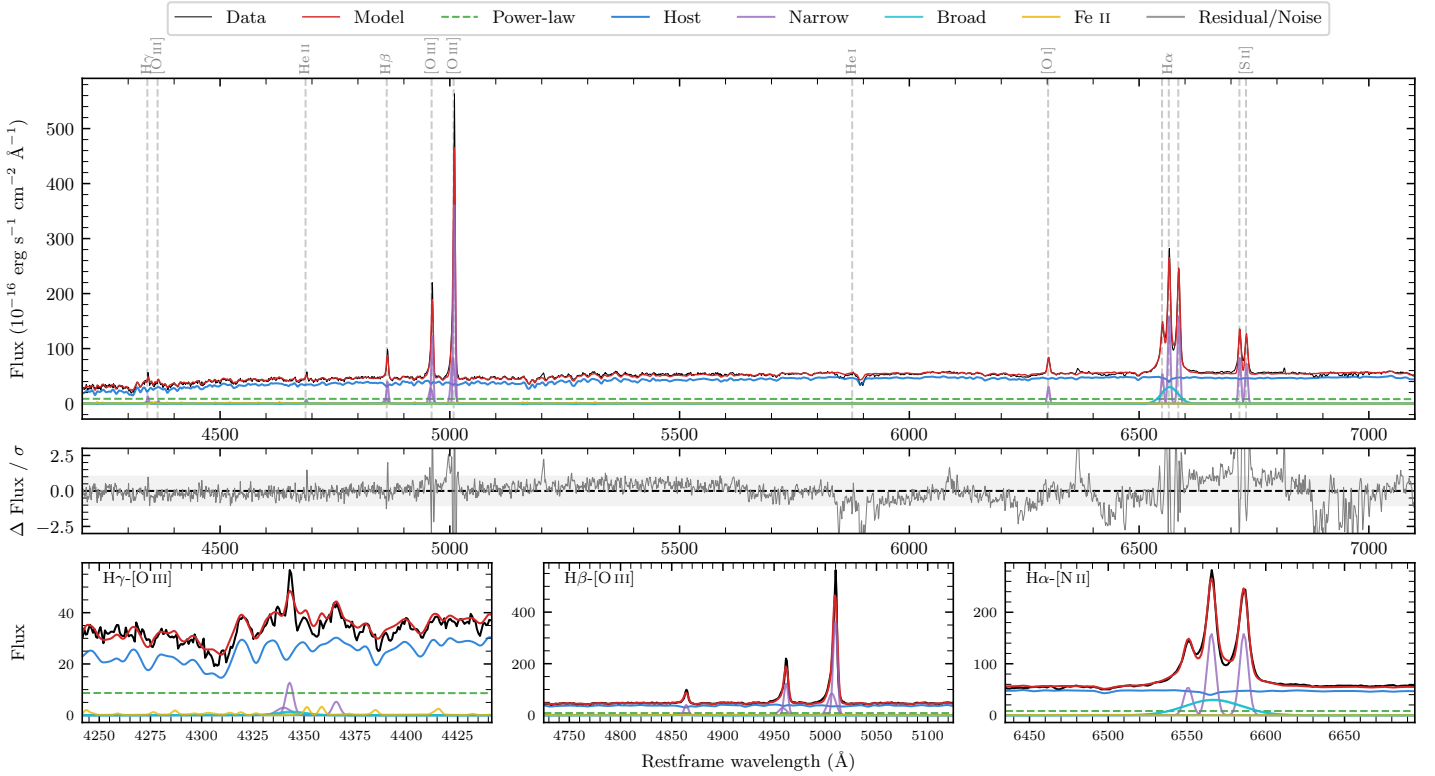
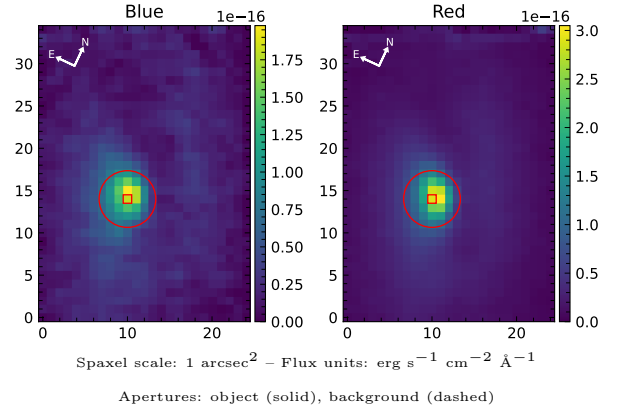


NGC 2992

Spectrum ID	88875404_sp2	Spectrum Type	Sy 1.8+
Alt name	g0945420-141935	Quality Flag	good
z	0.0081	AGN reference	6dFGS
RA, Dec	146.4247, -14.3269	MW $E(B - V)$	0.052
MJD	60650.62	Power law α_ν	-1.87 ± 0.11
SNR/ \AA B/R	9.6/22.5	$\log L_{5100, \text{AGN}}$	41.78 ± 0.07
Obs Airmass	1.75	$\log H\beta_{\text{Br}}/[\text{O III}]$	< -1.14
SMSS ID	88875404	$\log M_{L5100}/M_\odot$	—
Closest SMSS	1.75", 2145877596	$\log M_{H\alpha}/M_\odot$	6.18 ± 0.06
SMSS Mean r_{psf}	12.7 ± 0.3	$\log M_{H\beta}/M_\odot$	—
2MASS K_{ext}	8.6 ± 0.0	$\log M_{[\text{O III}]} / M_\odot$	—



Emission Line Measurements

Line	$\log L$ (erg s $^{-1}$)	FWHM (km s $^{-1}$)	σ (km s $^{-1}$)	EW (Angstrom)
H γ Narrow	39.06 ± 0.18	331 ± 63	190 ± 25	9.63 ± 2.04
Hγ Broad	—	—	—	—
[O III] 4364	38.53 ± 0.34	295 ± 63	125 ± 25	2.83 ± 1.47
He II Narrow	38.70 ± 0.22	295 ± 63	125 ± 25	4.27 ± 1.11
He II Broad	38.59 ± 0.45	1462 ± 63	621 ± 25	3.31 ± 2.39
H β Narrow	39.61 ± 0.04	331 ± 63	190 ± 25	34.49 ± 1.58
Hβ Broad	< 39.46	—	—	—
[O III] 5007	40.58 ± 0.01	331 ± 63	190 ± 25	326.09 ± 1.92
He I Narrow	—	—	—	—
He I Broad	—	—	—	—
[O I] 6300	39.45 ± 0.02	295 ± 63	125 ± 25	24.78 ± 0.76
H α Narrow	40.18 ± 0.01	295 ± 63	125 ± 25	133.78 ± 1.11
Hα Broad	40.56 ± 0.01	1896 ± 63	693 ± 25	324.83 ± 2.20
[N II] 6585	40.18 ± 0.01	295 ± 63	125 ± 25	133.95 ± 1.04
[S II] 6718	39.91 ± 0.01	295 ± 63	125 ± 25	72.54 ± 0.88
[S II] 6732	39.85 ± 0.01	295 ± 63	125 ± 25	63.23 ± 0.88

Emission Summary

H α Broad SNR	12.20
H β Broad SNR	0.65
H γ Broad SNR	0.00
AGN frac	0.19
Host frac	0.81
$\log L_{5100, \text{Host}}$	42.40
Fe II/H β	—
Fe II/[O III]	0.08

Quality Flags

spurious_hab/hbb	0/0
15100	2
balmer	2
balmer_snr	2
hb_width	2
balmer_width	2