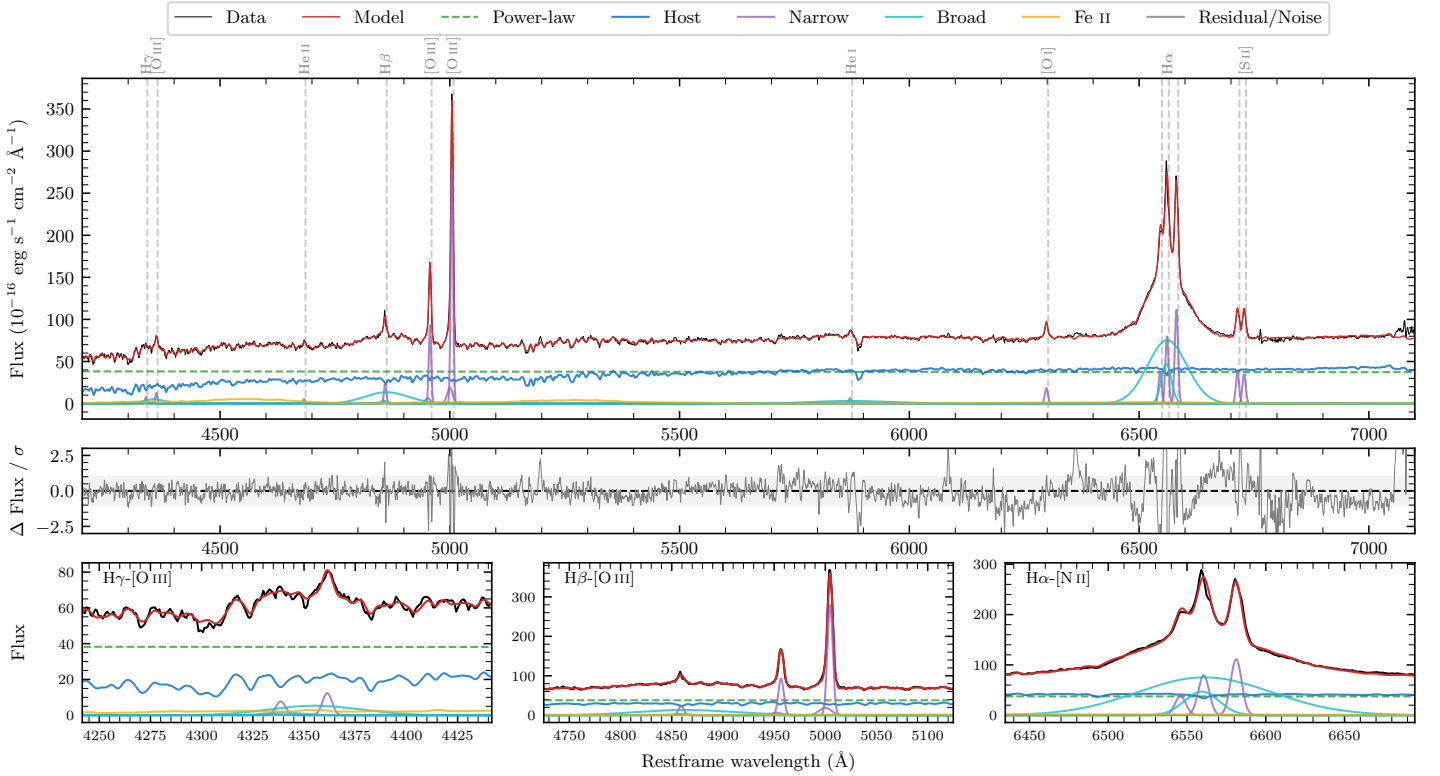
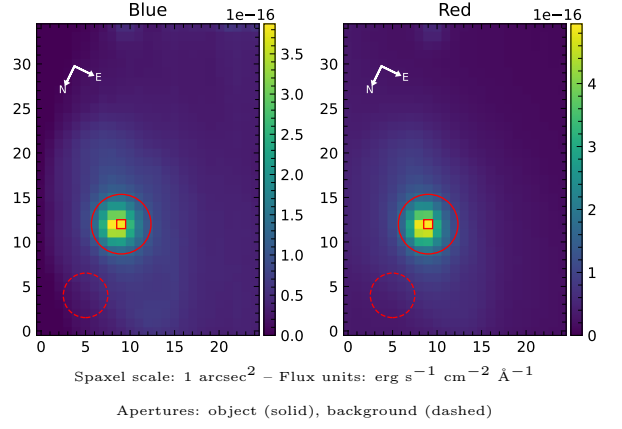


NGC 6860

Spectrum ID	485673774_sp3	Spectrum Type	Sy 1.5
Alt name	g2008469-610560	Quality Flag	good
z	0.0146	AGN reference	6dFGS
RA, Dec	302.1954, -61.0999	MW $E(B - V)$	0.036
MJD	59492.44	Power law α_ν	-1.95 ± 0.04
SNR/ \AA B/R	21.6/45.5	$\log L_{5100, \text{AGN}}$	43.01 ± 0.01
Obs Airmass	1.18	$\log H\beta_{\text{Br}}/[\text{O III}]$	-0.11 ± 0.02
SMSS ID	485673774	$\log M_{L5100}/M_\odot$	7.98 ± 0.10
Closest SMSS	None $< 15''$	$\log M_{\text{H}\alpha}/M_\odot$	7.17 ± 0.03
SMSS Mean r_{psf}	13.5 ± 0.1	$\log M_{\text{H}\beta}/M_\odot$	7.86 ± 0.11
2MASS K_{ext}	9.4 ± 0.0	$\log M_{[\text{O III}]} / M_\odot$	8.04 ± 0.10



Emission Line Measurements

Line	$\log L$ (erg s $^{-1}$)	FWHM (km s $^{-1}$)	σ (km s $^{-1}$)	EW (\AA)
H γ Narrow	39.44 ± 0.18	385 ± 62	219 ± 26	1.37 ± 0.37
Hγ Broad	40.26 ± 0.08	3508 ± 277	1247 ± 46	8.80 ± 0.79
[O III] 4364	39.58 ± 0.10	374 ± 62	158 ± 25	1.91 ± 0.26
He II Narrow	39.26 ± 0.18	374 ± 62	158 ± 25	0.91 ± 0.20
He II Broad	39.07 ± 0.41	1244 ± 71	528 ± 29	0.57 ± 0.34
H β Narrow	39.97 ± 0.05	385 ± 62	219 ± 26	4.72 ± 0.28
Hβ Broad	40.95 ± 0.02	5656 ± 667	2442 ± 45	44.43 ± 0.87
[O III] 5007	41.06 ± 0.01	385 ± 62	219 ± 26	56.99 ± 0.30
He I Narrow	39.44 ± 0.06	374 ± 62	158 ± 25	1.38 ± 0.13
He I Broad	40.55 ± 0.04	10057 ± 94	4271 ± 39	17.89 ± 0.83
[O I] 6300	39.92 ± 0.02	374 ± 62	158 ± 25	4.21 ± 0.13
H α Narrow	40.57 ± 0.01	374 ± 62	158 ± 25	18.80 ± 0.17
Hα Broad	41.70 ± 0.01	2659 ± 80	1501 ± 25	253.57 ± 0.52
[N II] 6585	40.72 ± 0.01	374 ± 62	158 ± 25	26.36 ± 0.17
[S II] 6718	40.25 ± 0.01	374 ± 62	158 ± 25	8.96 ± 0.14
[S II] 6732	40.22 ± 0.01	374 ± 62	158 ± 25	8.40 ± 0.15

Emission Summary

H α Broad SNR	37.40
H β Broad SNR	5.16
H γ Broad SNR	1.99
AGN frac	0.56
Host frac	0.44
$\log L_{5100, \text{Host}}$	42.90
Fe II/H β	0.75
Fe II/[O III]	0.59

Quality Flags

spurious_hab/hbb	0/0
15100	0
balmer	0
balmer_snr	1
hb_width	0
balmer_width	1