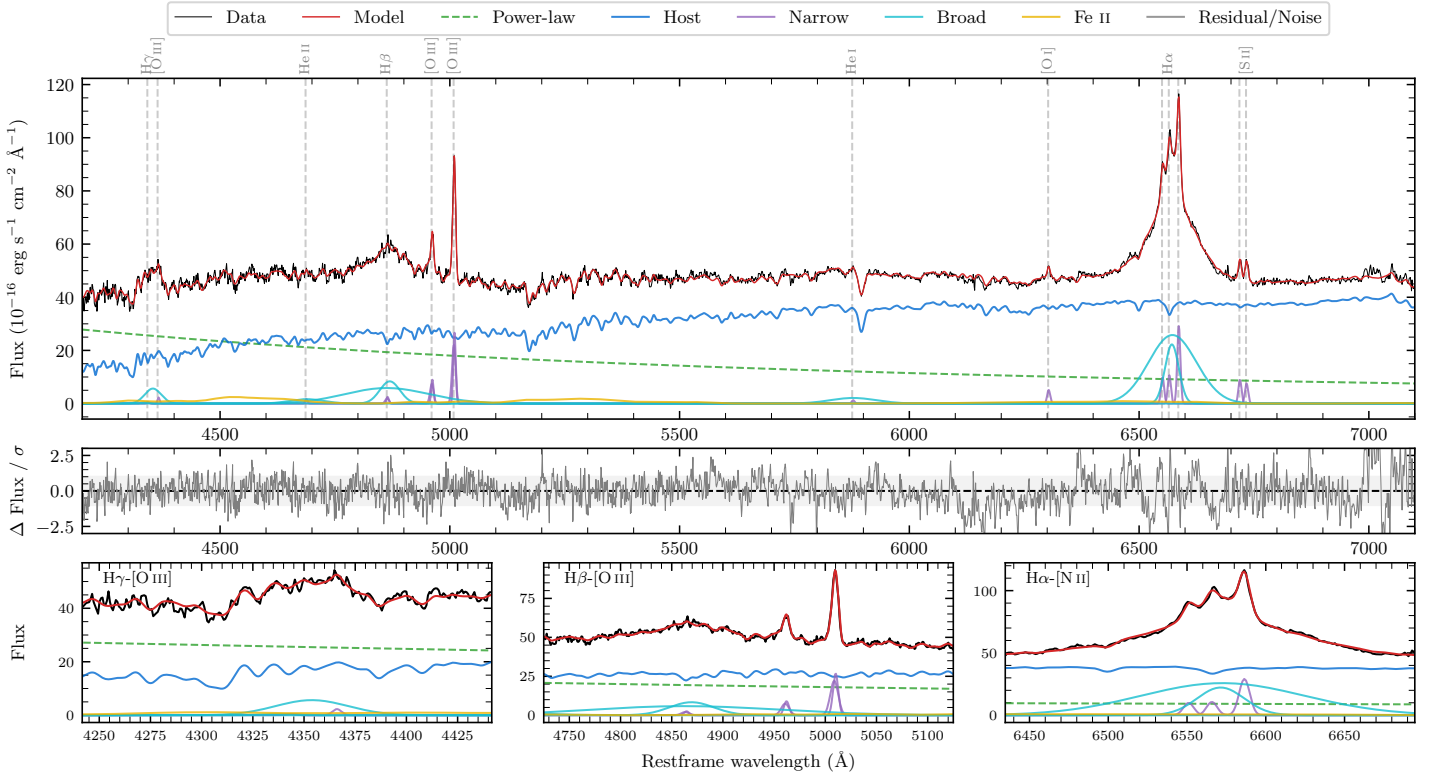
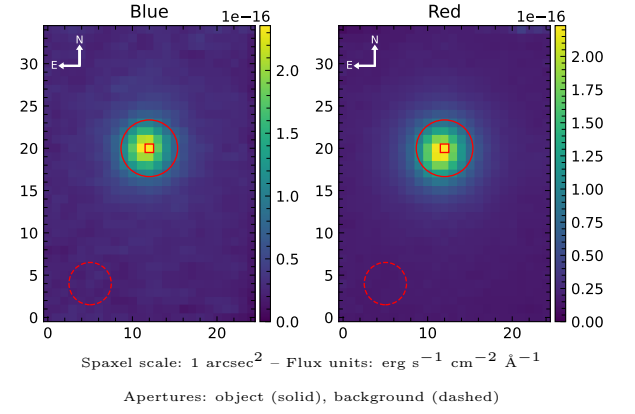


NGC 863

Spectrum ID	15292183_sp1	Spectrum Type	Sy 1.2
Alt name	g0214336-004600	Quality Flag	good
z	0.0265	AGN reference	6dFGS
RA, Dec	33.6399, -0.7667	MW $E(B - V)$	0.031
MJD	60563.6	Power law α_ν	0.48 ± 0.01
SNR/ \AA B/R	31.9/58.5	$\log L_{5100, \text{AGN}}$	43.14 ± 0.01
Obs Airmass	1.49	$\log H\beta_{\text{Br}}/[\text{O III}]$	0.67 ± 0.01
SMSS ID	15292183	$\log M_{L5100}/M_\odot$	7.88 ± 0.04
Closest SMSS	6.02", 2027524088	$\log M_{H\alpha}/M_\odot$	7.32 ± 0.02
SMSS Mean r_{psf}	13.6 ± 0.1	$\log M_{H\beta}/M_\odot$	7.94 ± 0.04
2MASS K_{ext}	9.5 ± 0.0	$\log M_{[\text{O III}]} / M_\odot$	7.76 ± 0.05



Emission Line Measurements

Line	$\log L$ (erg s $^{-1}$)	FWHM (km s $^{-1}$)	σ (km s $^{-1}$)	EW (\AA)
H γ Narrow	38.99 ± 0.41	444 ± 63	207 ± 26	0.25 ± 0.20
Hγ Broad	40.63 ± 0.04	2988 ± 140	1001 ± 38	10.50 ± 0.50
[O III] 4364	39.32 ± 0.23	363 ± 63	154 ± 25	0.52 ± 0.17
He II Narrow	39.23 ± 0.23	363 ± 63	154 ± 25	0.50 ± 0.17
He II Broad	40.41 ± 0.07	5559 ± 120	2361 ± 50	7.49 ± 0.67
H β Narrow	39.75 ± 0.09	444 ± 63	207 ± 26	1.88 ± 0.21
Hβ Broad	41.47 ± 0.01	4717 ± 194	3824 ± 64	95.93 ± 1.14
[O III] 5007	40.80 ± 0.01	444 ± 63	207 ± 26	22.18 ± 0.26
He I Narrow	39.19 ± 0.16	363 ± 63	154 ± 25	0.81 ± 0.18
He I Broad	40.63 ± 0.03	5973 ± 120	2536 ± 50	22.41 ± 0.92
[O I] 6300	39.83 ± 0.04	363 ± 63	154 ± 25	4.21 ± 0.23
H α Narrow	40.17 ± 0.03	363 ± 63	154 ± 25	10.08 ± 0.32
Hα Broad	41.83 ± 0.01	2856 ± 75	1725 ± 25	470.49 ± 1.12
[N II] 6585	40.61 ± 0.01	363 ± 63	154 ± 25	27.81 ± 0.33
[S II] 6718	40.10 ± 0.02	363 ± 63	154 ± 25	9.12 ± 0.30
[S II] 6732	40.03 ± 0.03	363 ± 63	154 ± 25	7.79 ± 0.29

Emission Summary

H α Broad SNR	31.63
H β Broad SNR	9.35
H γ Broad SNR	3.81
AGN frac	0.39
Host frac	0.61
$\log L_{5100, \text{Host}}$	43.33
Fe II/H β	0.29
Fe II/[O III]	1.37

Quality Flags

spurious_hab/hbb	0/0
15100	2
balmer	0
balmer_snr	0
hb_width	2
balmer_width	0