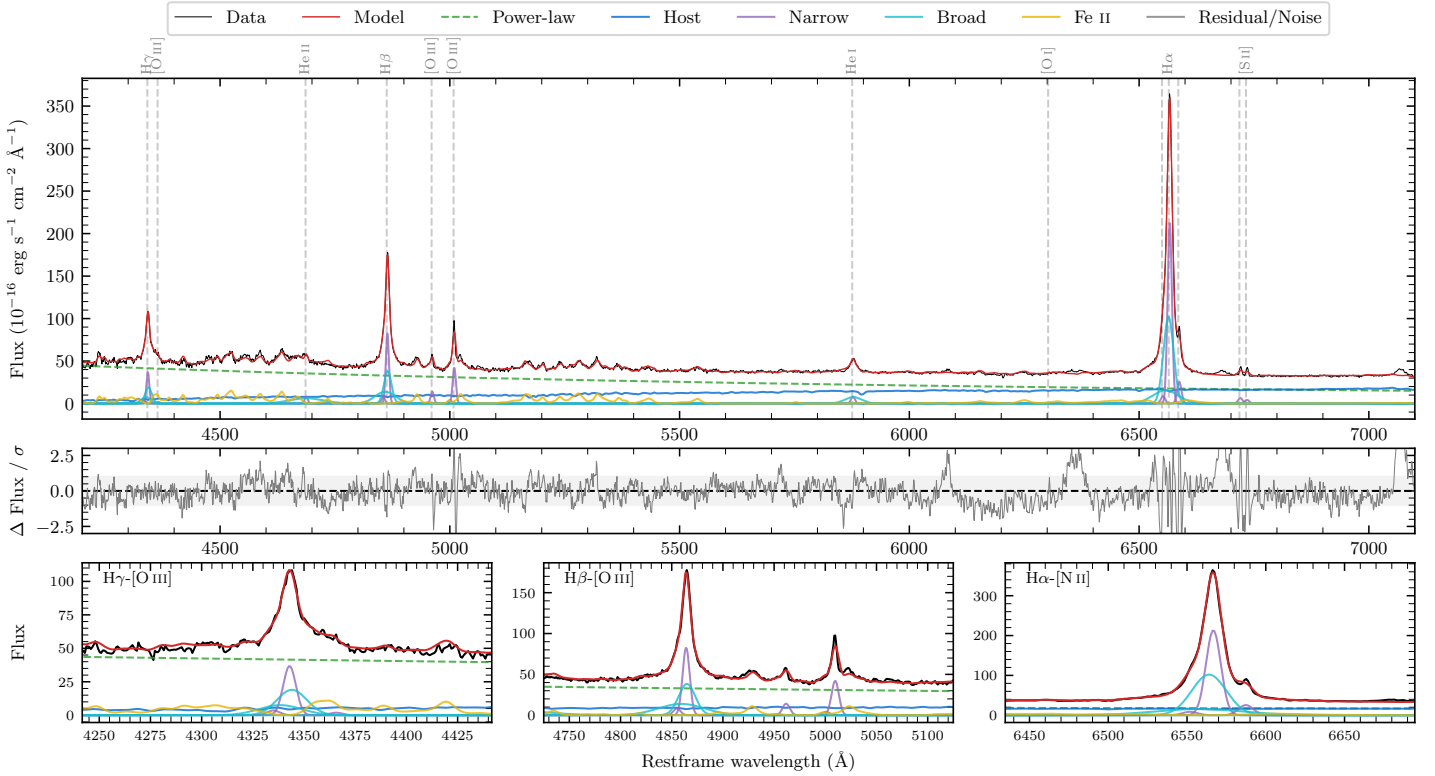
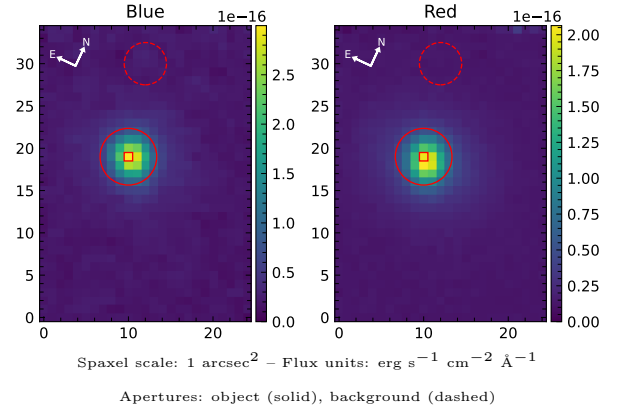


MCG-02-07-024

Spectrum ID	15344896_sp2	Spectrum Type	Sy 1.2
Alt name	g0230055-085953	Quality Flag	good
z	0.0164	AGN reference	6dFGS
RA, Dec	37.5230, -8.9981	MW $E(B - V)$	0.029
MJD	60563.61	Power law α_ν	0.07 ± 0.09
SNR/ \AA B/R	16.8/26.8	$\log L_{5100, \text{AGN}}$	42.95 ± 0.01
Obs Airmass	1.38	$\log H\beta_{\text{Br}} / [\text{O III}]$	0.57 ± 0.02
SMSS ID	15344896	$\log M_{L5100} / M_\odot$	6.76 ± 0.04
Closest SMSS	7.32", 2027599306	$\log M_{\text{H}\alpha} / M_\odot$	6.33 ± 0.05
SMSS Mean r_{psf}	14.0 ± 0.1	$\log M_{\text{H}\beta} / M_\odot$	6.68 ± 0.05
2MASS K_{ext}	10.5 ± 0.0	$\log M_{[\text{O III}]} / M_\odot$	6.52 ± 0.06



Emission Line Measurements

Line	$\log L$ (erg s $^{-1}$)	FWHM (km s $^{-1}$)	σ (km s $^{-1}$)	EW (\AA)
H γ Narrow	40.27 ± 0.06	520 ± 63	267 ± 27	7.71 ± 0.31
Hγ Broad	40.51 ± 0.04	1329 ± 99	519 ± 41	13.32 ± 0.48
[O III] 4364	38.95 ± 0.35	506 ± 63	214 ± 25	0.38 ± 0.24
He II Narrow	39.61 ± 0.08	506 ± 63	214 ± 25	2.00 ± 0.24
He II Broad	40.53 ± 0.04	5544 ± 106	2354 ± 44	16.60 ± 0.76
H β Narrow	40.67 ± 0.03	520 ± 63	267 ± 27	24.50 ± 0.32
Hβ Broad	40.96 ± 0.02	1431 ± 45	744 ± 30	48.26 ± 0.61
[O III] 5007	40.39 ± 0.01	520 ± 63	267 ± 27	13.67 ± 0.28
He I Narrow	39.71 ± 0.05	506 ± 63	214 ± 25	3.94 ± 0.26
He I Broad	40.31 ± 0.03	2166 ± 103	920 ± 43	15.99 ± 0.52
[O I] 6300	—	—	—	—
H α Narrow	41.17 ± 0.01	506 ± 63	214 ± 25	144.36 ± 0.45
Hα Broad	41.36 ± 0.01	1280 ± 63	540 ± 25	223.75 ± 0.72
[N II] 6585	40.25 ± 0.02	506 ± 63	214 ± 25	17.46 ± 0.37
[S II] 6718	39.67 ± 0.04	506 ± 63	214 ± 25	4.74 ± 0.26
[S II] 6732	39.50 ± 0.06	506 ± 63	214 ± 25	3.21 ± 0.26

Emission Summary

H α Broad SNR	41.69
H β Broad SNR	18.44
H γ Broad SNR	9.16
AGN frac	0.76
Host frac	0.24
$\log L_{5100, \text{Host}}$	42.45
Fe II/H β	1.37
Fe II/[O III]	5.14

Quality Flags

spurious_hab/hbb	0/0
15100	0
balmer	0
balmer_snr	0
hb_width	1
balmer_width	0