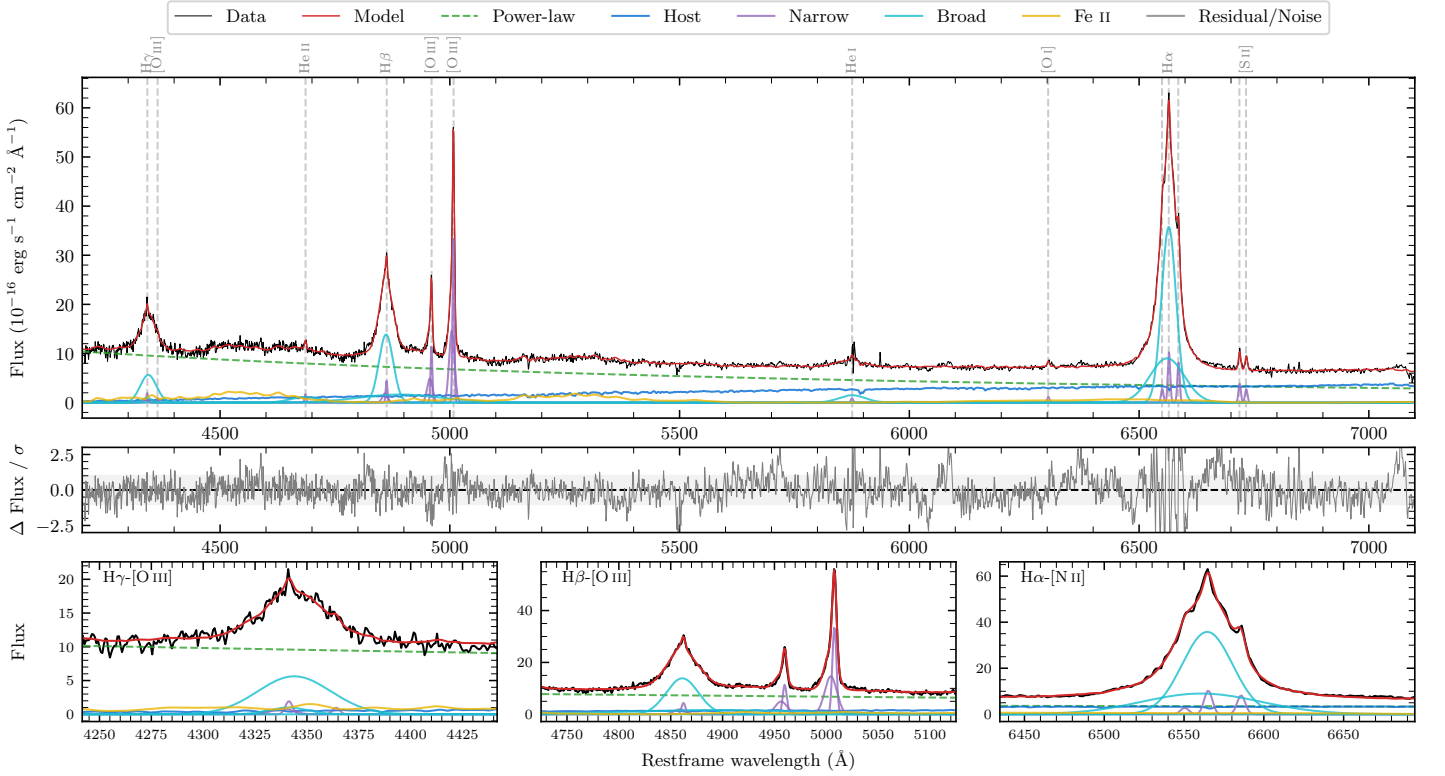
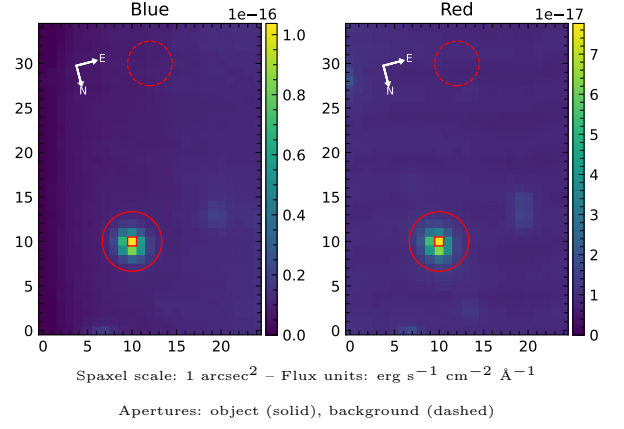


2MASS J09435541-7049411

Spectrum ID	453569328_sp1	Spectrum Type	Sy 1.5
Alt name	5242563770154481408	Quality Flag	good
z	0.0719	AGN reference	AIBRICQS2
RA, Dec	145.9809, -70.8281	MW $E(B - V)$	0.169
MJD	59993.71	Power law α_ν	0.44 ± 0.04
SNR/ \AA B/R	13.9/19.6	$\log L_{5100, \text{AGN}}$	43.62 ± 0.01
Obs Airmass	1.46	$\log H\beta_{\text{Br}}/[\text{O III}]$	0.15 ± 0.12
SMSS ID	453569328	$\log M_{L5100}/M_\odot$	7.44 ± 0.02
Closest SMSS	8.16", 453569331	$\log M_{\text{H}\alpha}/M_\odot$	7.37 ± 0.03
SMSS Mean r_{psf}	16.4 ± 0.0	$\log M_{\text{H}\beta}/M_\odot$	7.47 ± 0.06
2MASS K_{ext}	nan \pm nan	$\log M_{[\text{O III}]} / M_\odot$	7.56 ± 0.02



Emission Line Measurements

Line	$\log L$ (erg s ⁻¹)	FWHM (km s ⁻¹)	σ (km s ⁻¹)	EW (Å)
H γ Narrow	40.41 ± 0.14	352 ± 63	292 ± 26	2.11 ± 0.35
Hγ Broad	41.58 ± 0.02	2711 ± 167	1009 ± 47	30.37 ± 0.67
[O III] 4364	39.75 ± 0.27	278 ± 63	117 ± 25	0.47 ± 0.20
He II Narrow	40.02 ± 0.13	278 ± 63	117 ± 25	1.05 ± 0.20
He II Broad	—	—	—	—
H β Narrow	40.81 ± 0.04	352 ± 63	292 ± 26	7.08 ± 0.39
Hβ Broad	$41.86^{+0.23}_{-0.01}$	2241 ± 48	827 ± 27	79.08 ± 0.66
[O III] 5007	41.71 ± 0.01	352 ± 63	292 ± 26	60.08 ± 0.44
He I Narrow	39.86 ± 0.14	278 ± 63	117 ± 25	1.24 ± 0.29
He I Broad	41.17 ± 0.02	3443 ± 168	1462 ± 71	25.34 ± 0.76
[O I] 6300	39.99 ± 0.07	278 ± 63	117 ± 25	2.01 ± 0.22
H α Narrow	40.95 ± 0.02	278 ± 63	117 ± 25	20.27 ± 0.37
Hα Broad	42.49 ± 0.01	1925 ± 63	868 ± 25	692.25 ± 1.18
[N II] 6585	40.86 ± 0.02	278 ± 63	117 ± 25	16.34 ± 0.34
[S II] 6718	40.54 ± 0.03	278 ± 63	117 ± 25	8.22 ± 0.33
[S II] 6732	40.39 ± 0.03	278 ± 63	117 ± 25	5.94 ± 0.29

Emission Summary

H α Broad SNR	62.72
H β Broad SNR	19.46
H γ Broad SNR	9.17
AGN frac	0.81
Host frac	0.19
$\log L_{5100, \text{Host}}$	42.98
Fe II/H β	—
Fe II/[O III]	—

Quality Flags

spurious_hab/hbb	0/2
15100	2
balmer	0
balmer_snr	0
hb_width	0
balmer_width	0