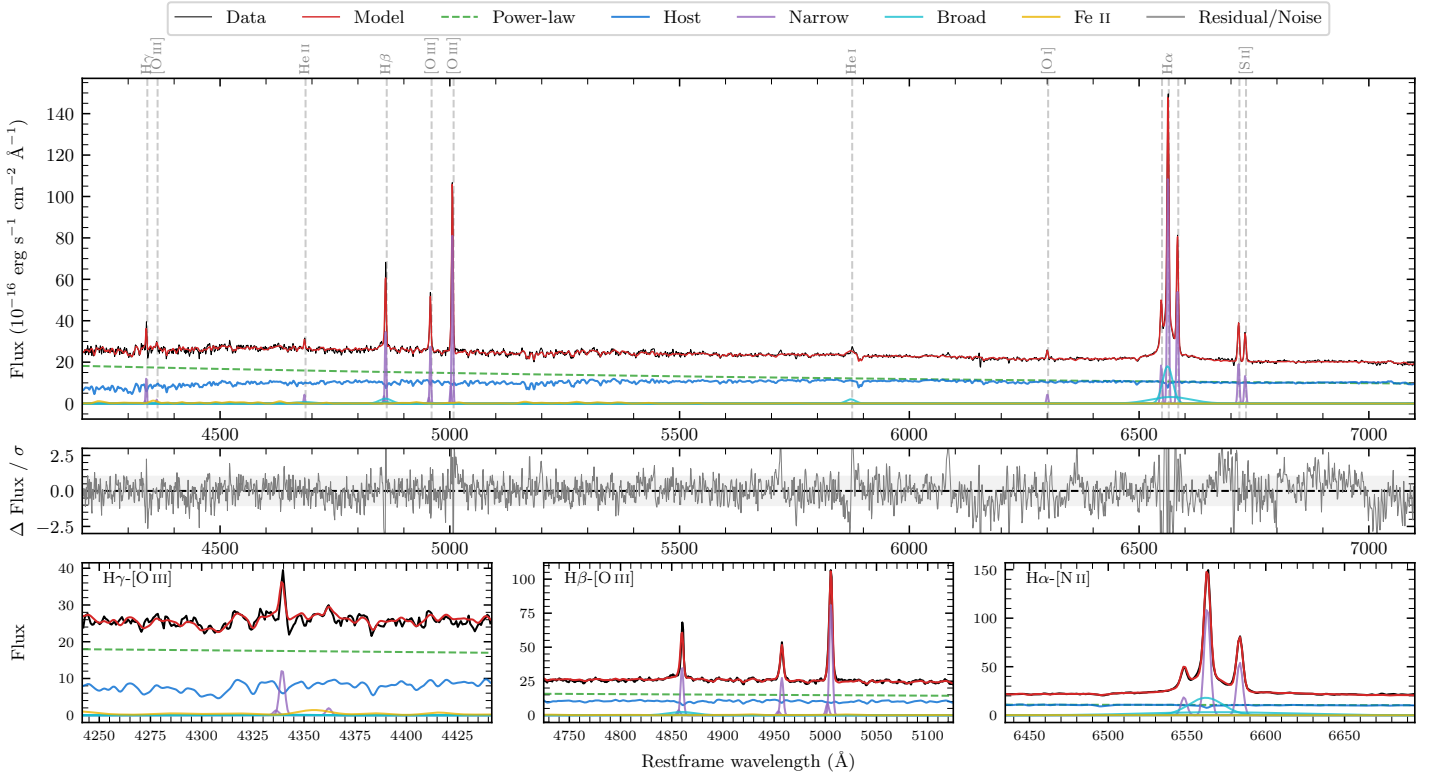
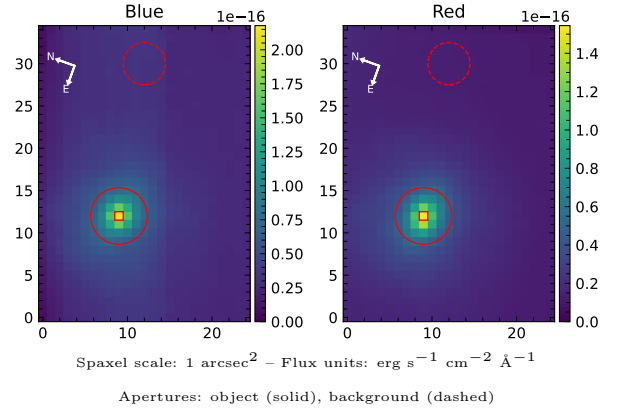


# IRAS 01089-4743

Spectrum ID	504062580_sp1	Spectrum Type	Sy 1.8
Alt name	g0111097-472735	Quality Flag	good
$z$	0.0234	AGN reference	6dFGS
RA, Dec	17.7905, -47.4599	MW $E(B - V)$	0.007
MJD	59397.82	Power law $\alpha_\nu$	$-0.80 \pm 0.05$
SNR/ $\text{\AA}$ B/R	24.6/46.9	$\log L_{5100, \text{AGN}}$	$42.98 \pm 0.01$
Obs Airmass	1.06	$\log H\beta_{\text{Br}}/[\text{O III}]$	$-0.53 \pm 0.05$
SMSS ID	504062580	$\log M_{L5100}/M_\odot$	$6.97 \pm 0.06$
Closest SMSS	12.93", 2722391486	$\log M_{\text{H}\alpha}/M_\odot$	$6.17 \pm 0.06$
SMSS Mean $r_{\text{psf}}$	$14.5 \pm 0.2$	$\log M_{\text{H}\beta}/M_\odot$	$6.49 \pm 0.09$
2MASS $K_{\text{ext}}$	nan $\pm$ nan	$\log M_{[\text{O III}]} / M_\odot$	$6.85 \pm 0.07$



## Emission Line Measurements

Line	$\log L$ (erg s $^{-1}$ )	FWHM (km s $^{-1}$ )	$\sigma$ (km s $^{-1}$ )	EW (Angstrom)
H $\gamma$ Narrow	$39.77 \pm 0.05$	$219 \pm 62$	$107 \pm 25$	$2.58 \pm 0.17$
<b>H<math>\gamma</math> Broad</b>	—	—	—	—
[O III] 4364	$38.92 \pm 0.25$	$211 \pm 62$	$88 \pm 25$	$0.37 \pm 0.13$
He II Narrow	$39.30 \pm 0.10$	$211 \pm 62$	$88 \pm 25$	$0.95 \pm 0.11$
He II Broad	$39.74 \pm 0.14$	$3329 \pm 65$	$1414 \pm 26$	$2.62 \pm 0.47$
H $\beta$ Narrow	$40.27 \pm 0.01$	$219 \pm 62$	$107 \pm 25$	$9.40 \pm 0.14$
<b>H<math>\beta</math> Broad</b>	<b><math>40.12 \pm 0.05</math></b>	<b><math>1795 \pm 117</math></b>	<b><math>674 \pm 35</math></b>	<b><math>6.49 \pm 0.36</math></b>
[O III] 5007	$40.65 \pm 0.01$	$219 \pm 62$	$107 \pm 25$	$23.25 \pm 0.14$
He I Narrow	—	—	—	—
He I Broad	$39.86 \pm 0.03$	$1267 \pm 68$	$538 \pm 28$	$4.56 \pm 0.20$
[O I] 6300	$39.44 \pm 0.03$	$211 \pm 62$	$88 \pm 25$	$1.88 \pm 0.09$
H $\alpha$ Narrow	$40.86 \pm 0.01$	$211 \pm 62$	$88 \pm 25$	$52.09 \pm 0.13$
<b>H<math>\alpha</math> Broad</b>	<b><math>41.06 \pm 0.01</math></b>	<b><math>1317 \pm 63</math></b>	<b><math>816 \pm 25</math></b>	<b><math>81.52 \pm 0.46</math></b>
[N II] 6585	$40.55 \pm 0.01$	$211 \pm 62$	$88 \pm 25$	$25.58 \pm 0.11$
[S II] 6718	$40.10 \pm 0.01$	$211 \pm 62$	$88 \pm 25$	$9.41 \pm 0.12$
[S II] 6732	$39.95 \pm 0.01$	$211 \pm 62$	$88 \pm 25$	$6.67 \pm 0.11$

## Emission Summary

H $\alpha$ Broad SNR	20.76
H $\beta$ Broad SNR	3.13
H $\gamma$ Broad SNR	0.00
AGN frac	0.60
Host frac	0.40
$\log L_{5100, \text{Host}}$	42.81
Fe II/H $\beta$	1.61
Fe II/[O III]	0.47

## Quality Flags

spurious_hab/hbb	0/0
15100	0
balmer	0
balmer_snr	2
hb_width	0
balmer_width	0