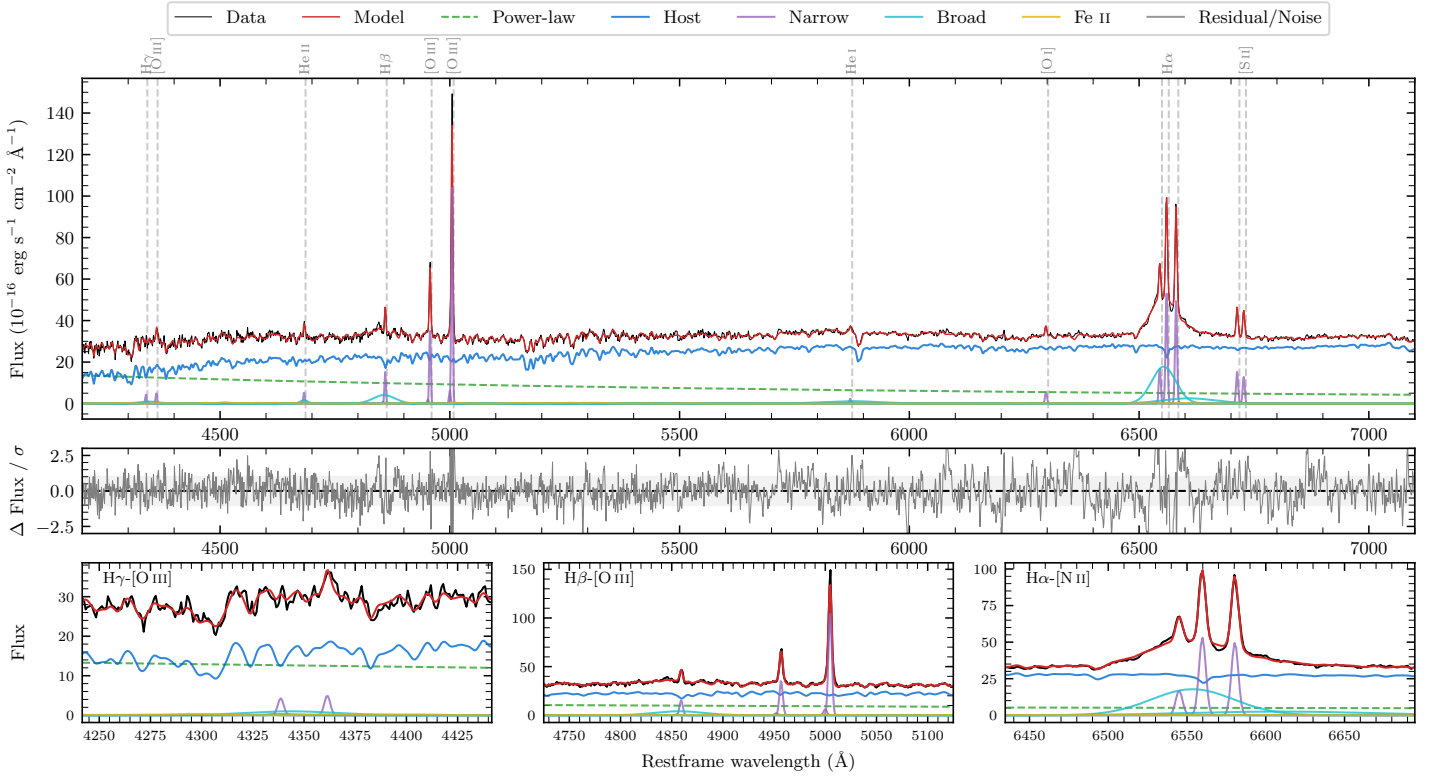
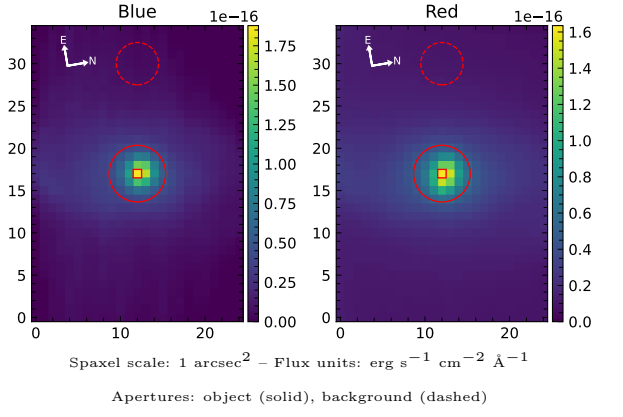


IC 3834

Spectrum ID	104764983_sp1	Spectrum Type	Sy 1.5
Alt name	g1251324-141316	Quality Flag	good
z	0.0141	AGN reference	6dFGS
RA, Dec	192.8849, -14.2212	MW $E(B - V)$	0.047
MJD	59016.39	Power law α_ν	0.22 ± 0.18
SNR/ \AA B/R	27.1/52.5	$\log L_{5100, \text{AGN}}$	42.35 ± 0.03
Obs Airmass	1.05	$\log H\beta_{\text{Br}}/[\text{O III}]$	-0.26 ± 0.03
SMSS ID	104764983	$\log M_{L5100}/M_\odot$	7.24 ± 0.05
Closest SMSS	7.72", 2170537380	$\log M_{\text{H}\alpha}/M_\odot$	6.78 ± 0.05
SMSS Mean r_{psf}	14.4 ± 0.2	$\log M_{\text{H}\beta}/M_\odot$	7.03 ± 0.07
2MASS K_{ext}	10.3 ± 0.0	$\log M_{[\text{O III}]} / M_\odot$	7.25 ± 0.06



Emission Line Measurements

Line	$\log L$ (erg s $^{-1}$)	FWHM (km s $^{-1}$)	σ (km s $^{-1}$)	EW (Angstroms)
H γ Narrow	38.91 ± 0.14	239 ± 62	119 ± 25	1.31 ± 0.25
Hγ Broad	39.50 ± 0.14	2846 ± 608	1201 ± 63	4.84 ± 0.84
[O III] 4364	38.95 ± 0.12	236 ± 62	99 ± 25	1.46 ± 0.23
He II Narrow	39.01 ± 0.09	236 ± 62	99 ± 25	1.96 ± 0.21
He II Broad	39.23 ± 0.13	1180 ± 63	501 ± 25	3.19 ± 0.46
H β Narrow	39.51 ± 0.03	239 ± 62	119 ± 25	6.66 ± 0.25
Hβ Broad	40.10 ± 0.03	3348 ± 102	1260 ± 28	25.76 ± 0.85
[O III] 5007	40.37 ± 0.01	239 ± 62	119 ± 25	51.16 ± 0.28
He I Narrow	38.75 ± 0.09	236 ± 62	99 ± 25	1.77 ± 0.21
He I Broad	39.96 ± 0.04	7374 ± 69	3131 ± 28	28.76 ± 1.31
[O I] 6300	39.16 ± 0.03	236 ± 62	99 ± 25	5.35 ± 0.24
H α Narrow	40.16 ± 0.01	236 ± 62	99 ± 25	57.98 ± 0.32
Hα Broad	40.88 ± 0.01	3010 ± 64	1383 ± 25	309.28 ± 1.48
[N II] 6585	40.13 ± 0.01	236 ± 62	99 ± 25	54.88 ± 0.31
[S II] 6718	39.63 ± 0.01	236 ± 62	99 ± 25	18.15 ± 0.30
[S II] 6732	39.56 ± 0.02	236 ± 62	99 ± 25	15.33 ± 0.32

Emission Summary

H α Broad SNR	16.43
H β Broad SNR	3.72
H γ Broad SNR	1.21
AGN frac	0.28
Host frac	0.72
$\log L_{5100, \text{Host}}$	42.75
Fe II/H β	0.32
Fe II/[O III]	0.17

Quality Flags

spurious_hab/hbb	0/0
15100	1
balmer	0
balmer_snr	1
hb_width	0
balmer_width	0