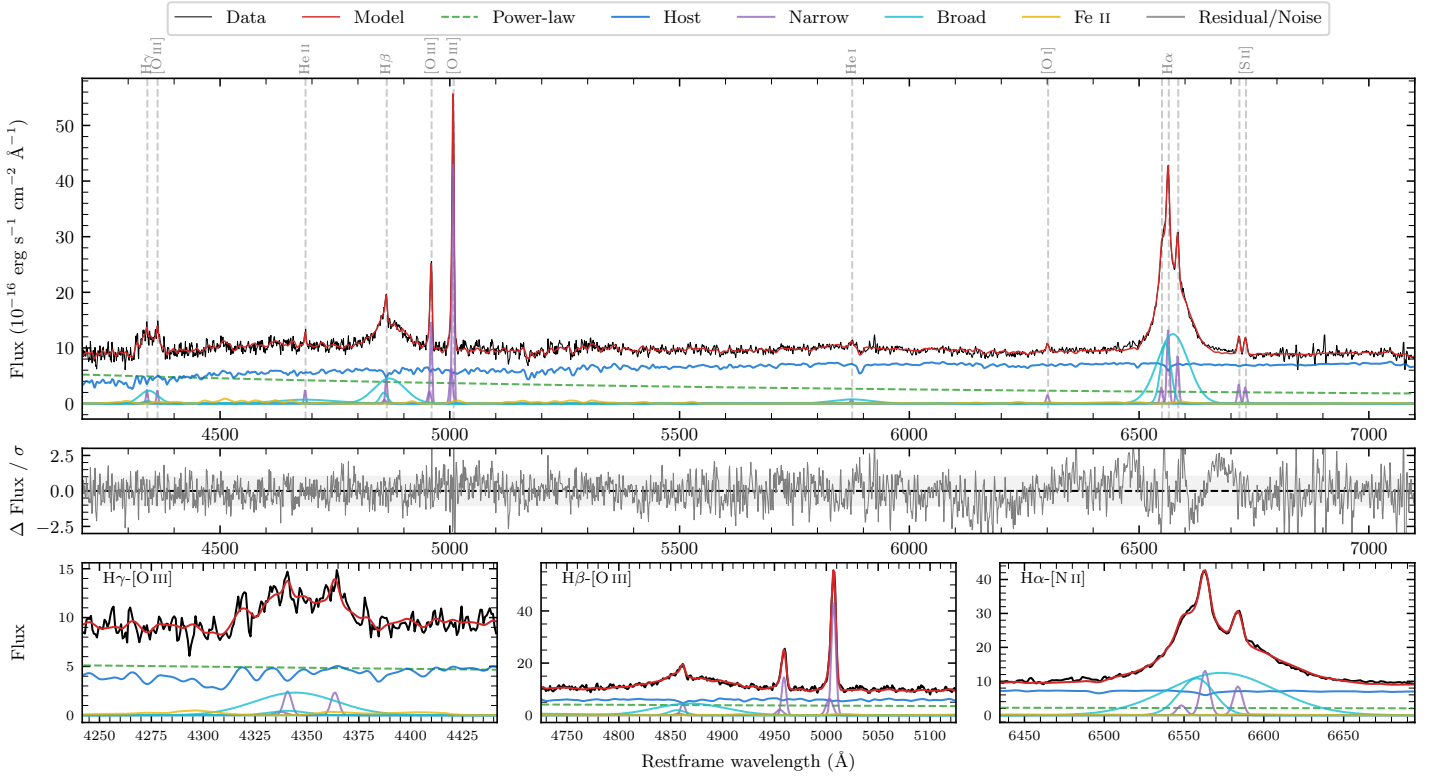
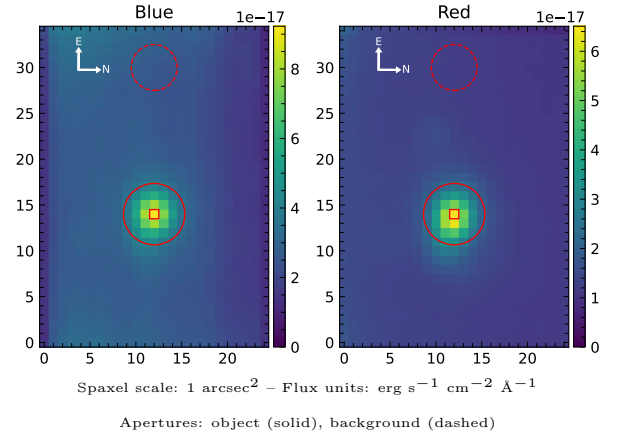


# LEDA 182874

Spectrum ID	94006307_sp1	Spectrum Type	Sy 1.5
Alt name	g1152059-033016	Quality Flag	good
$z$	0.0631	AGN reference	6dFGS
RA, Dec	178.0245, -3.5044	MW $E(B - V)$	0.023
MJD	59015.48	Power law $\alpha_\nu$	$0.01 \pm 0.24$
SNR/Å B/R	12.9/25.5	$\log L_{5100, \text{AGN}}$	$43.24 \pm 0.04$
Obs Airmass	1.63	$\log H\beta_{\text{Br}}/[\text{O III}]$	$0.16 \pm 0.01$
SMSS ID	94006307	$\log M_{L5100}/M_\odot$	$7.71 \pm 0.07$
Closest SMSS	4.23", 2154023495	$\log M_{\text{H}\alpha}/M_\odot$	$7.30 \pm 0.03$
SMSS Mean $r_{\text{psf}}$	$16.0 \pm 0.1$	$\log M_{\text{H}\beta}/M_\odot$	$7.80 \pm 0.07$
2MASS $K_{\text{ext}}$	$12.7 \pm 0.1$	$\log M_{[\text{O III}]} / M_\odot$	$7.87 \pm 0.07$



## Emission Line Measurements

Line	$\log L$ (erg s $^{-1}$ )	FWHM (km s $^{-1}$ )	$\sigma$ (km s $^{-1}$ )	EW (Å)
H $\gamma$ Narrow	$40.16 \pm 0.12$	$328 \pm 63$	$171 \pm 26$	$3.06 \pm 0.51$
<b>H<math>\gamma</math> Broad</b>	<b><math>41.12 \pm 0.04</math></b>	<b><math>2967 \pm 294</math></b>	<b><math>1129 \pm 65</math></b>	<b><math>27.31 \pm 1.43</math></b>
[O III] 4364	$40.05 \pm 0.13$	$306 \pm 63$	$129 \pm 25$	$2.43 \pm 0.43$
He II Narrow	$40.09 \pm 0.10$	$306 \pm 63$	$129 \pm 25$	$3.07 \pm 0.45$
He II Broad	$41.08 \pm 0.06$	$9921 \pm 187$	$4213 \pm 79$	$29.71 \pm 2.50$
H $\beta$ Narrow	$40.48 \pm 0.05$	$328 \pm 63$	$171 \pm 26$	$8.11 \pm 0.54$
<b>H<math>\beta</math> Broad</b>	<b><math>41.63 \pm 0.01</math></b>	<b><math>3680 \pm 277</math></b>	<b><math>1680 \pm 39</math></b>	<b><math>114.50 \pm 1.89</math></b>
[O III] 5007	$41.47 \pm 0.01$	$328 \pm 63$	$171 \pm 26$	$83.11 \pm 0.62$
He I Narrow	$39.67 \pm 0.14$	$306 \pm 63$	$129 \pm 25$	$1.82 \pm 0.39$
He I Broad	$40.94 \pm 0.04$	$5372 \pm 154$	$2281 \pm 65$	$34.01 \pm 1.59$
[O I] 6300	$40.03 \pm 0.06$	$306 \pm 63$	$129 \pm 25$	$4.75 \pm 0.41$
H $\alpha$ Narrow	$40.98 \pm 0.01$	$306 \pm 63$	$129 \pm 25$	$46.76 \pm 0.58$
<b>H<math>\alpha</math> Broad</b>	<b><math>42.14 \pm 0.01</math></b>	<b><math>2262 \pm 74</math></b>	<b><math>1155 \pm 25</math></b>	<b><math>676.82 \pm 1.82</math></b>
[N II] 6585	$40.80 \pm 0.01$	$306 \pm 63$	$129 \pm 25$	$30.62 \pm 0.55$
[S II] 6718	$40.41 \pm 0.02$	$306 \pm 63$	$129 \pm 25$	$13.07 \pm 0.48$
[S II] 6732	$40.34 \pm 0.03$	$306 \pm 63$	$129 \pm 25$	$11.31 \pm 0.49$

## Emission Summary

H $\alpha$ Broad SNR	29.91
H $\beta$ Broad SNR	8.36
H $\gamma$ Broad SNR	3.78
AGN frac	0.38
Host frac	0.62
$\log L_{5100, \text{Host}}$	43.45
Fe II/H $\beta$	0.27
Fe II/[O III]	0.39

## Quality Flags

spurious_hab/hbb	0/0
15100	1
balmer	0
balmer_snr	0
hb_width	0
balmer_width	0