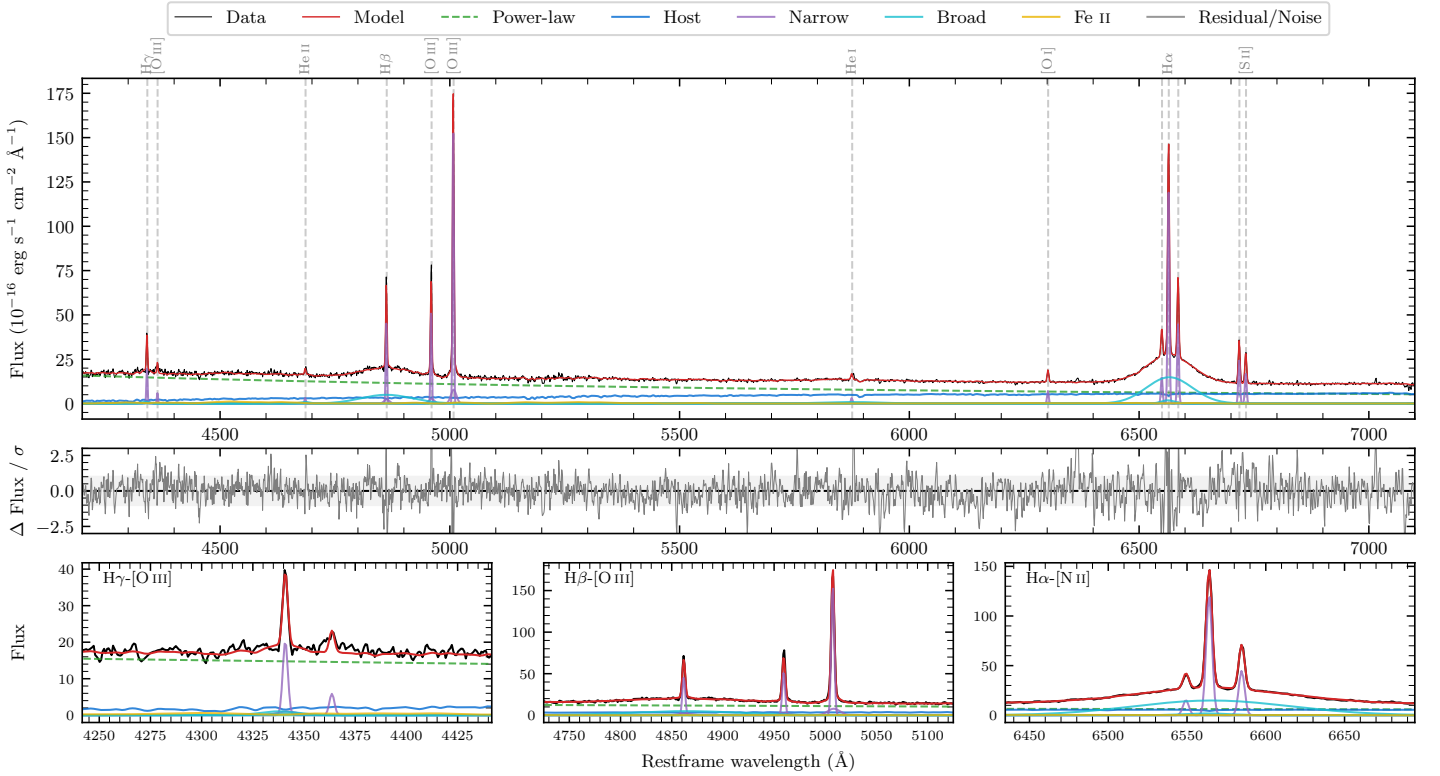
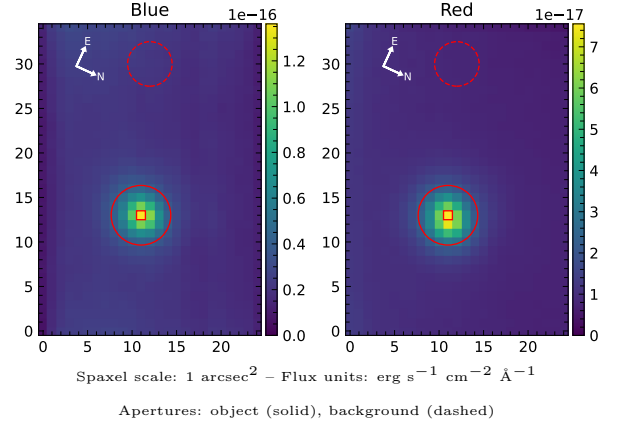


# LEDA 3096058

Spectrum ID	91619413_sp1	Spectrum Type	Sy 1.5
Alt name	g1136354-222935	Quality Flag	good
$z$	0.0724	AGN reference	6dFGS
RA, Dec	174.1474, -22.4932	MW $E(B - V)$	0.037
MJD	59015.47	Power law $\alpha_\nu$	$0.10 \pm 0.12$
SNR/ $\text{\AA}$ B/R	15.5/24.9	$\log L_{5100, \text{AGN}}$	$43.84 \pm 0.02$
Obs Airmass	1.37	$\log H\beta_{\text{Br}}/[\text{O III}]$	$0.01 \pm 0.03$
SMSS ID	91619413	$\log M_{L5100}/M_\odot$	$8.63 \pm 0.05$
Closest SMSS	None $< 15''$	$\log M_{\text{H}\alpha}/M_\odot$	$8.15 \pm 0.03$
SMSS Mean $r_{\text{psf}}$	$15.7 \pm 0.1$	$\log M_{\text{H}\beta}/M_\odot$	$8.61 \pm 0.05$
2MASS $K_{\text{ext}}$	$12.7 \pm 0.1$	$\log M_{[\text{O III}]} / M_\odot$	$8.78 \pm 0.05$



## Emission Line Measurements

Line	$\log L$ (erg s $^{-1}$ )	FWHM (km s $^{-1}$ )	$\sigma$ (km s $^{-1}$ )	EW ( $\text{\AA}$ )
H $\gamma$ Narrow	$41.02 \pm 0.03$	$214 \pm 62$	$170 \pm 27$	$5.54 \pm 0.30$
<b>H<math>\gamma</math> Broad</b>	<b><math>40.71 \pm 0.14</math></b>	<b><math>1546 \pm 238</math></b>	<b><math>529 \pm 77</math></b>	<b><math>2.52 \pm 0.40</math></b>
[O III] 4364	$40.40 \pm 0.08$	$202 \pm 62$	$85 \pm 25$	$1.35 \pm 0.14$
He II Narrow	$40.16 \pm 0.13$	$202 \pm 62$	$85 \pm 25$	$0.90 \pm 0.15$
He II Broad	$40.53 \pm 0.16$	$1639 \pm 235$	$696 \pm 99$	$2.14 \pm 0.44$
H $\beta$ Narrow	$41.42 \pm 0.01$	$214 \pm 62$	$170 \pm 27$	$17.59 \pm 0.33$
<b>H<math>\beta</math> Broad</b>	<b><math>41.98 \pm 0.03</math></b>	<b><math>7872 \pm 471</math></b>	<b><math>2983 \pm 182</math></b>	<b><math>63.89 \pm 1.08</math></b>
[O III] 5007	$41.97 \pm 0.01$	$214 \pm 62$	$170 \pm 27$	$66.13 \pm 0.39$
He I Narrow	$40.26 \pm 0.08$	$202 \pm 62$	$85 \pm 25$	$1.82 \pm 0.17$
He I Broad	$41.30 \pm 0.06$	$7746 \pm 606$	$3289 \pm 257$	$19.35 \pm 0.83$
[O I] 6300	$40.63 \pm 0.02$	$202 \pm 62$	$85 \pm 25$	$4.97 \pm 0.15$
H $\alpha$ Narrow	$41.89 \pm 0.01$	$202 \pm 62$	$85 \pm 25$	$97.76 \pm 0.24$
<b>H<math>\alpha</math> Broad</b>	<b><math>42.42 \pm 0.01</math></b>	<b><math>4938 \pm 115</math></b>	<b><math>1932 \pm 35</math></b>	<b><math>332.95 \pm 1.03</math></b>
[N II] 6585	$41.46 \pm 0.01$	$202 \pm 62$	$85 \pm 25$	$36.70 \pm 0.21$
[S II] 6718	$41.20 \pm 0.01$	$202 \pm 62$	$85 \pm 25$	$21.12 \pm 0.21$
[S II] 6732	$41.06 \pm 0.01$	$202 \pm 62$	$85 \pm 25$	$15.24 \pm 0.19$

## Emission Summary

H $\alpha$ Broad SNR	17.13
H $\beta$ Broad SNR	5.35
H $\gamma$ Broad SNR	1.55
AGN frac	0.76
Host frac	0.24
$\log L_{5100, \text{Host}}$	43.33
Fe II/H $\beta$	0.31
Fe II/[O III]	0.32

## Quality Flags

spurious_hab/hbb	0/0
15100	0
balmer	0
balmer_snr	1
hb_width	0
balmer_width	0