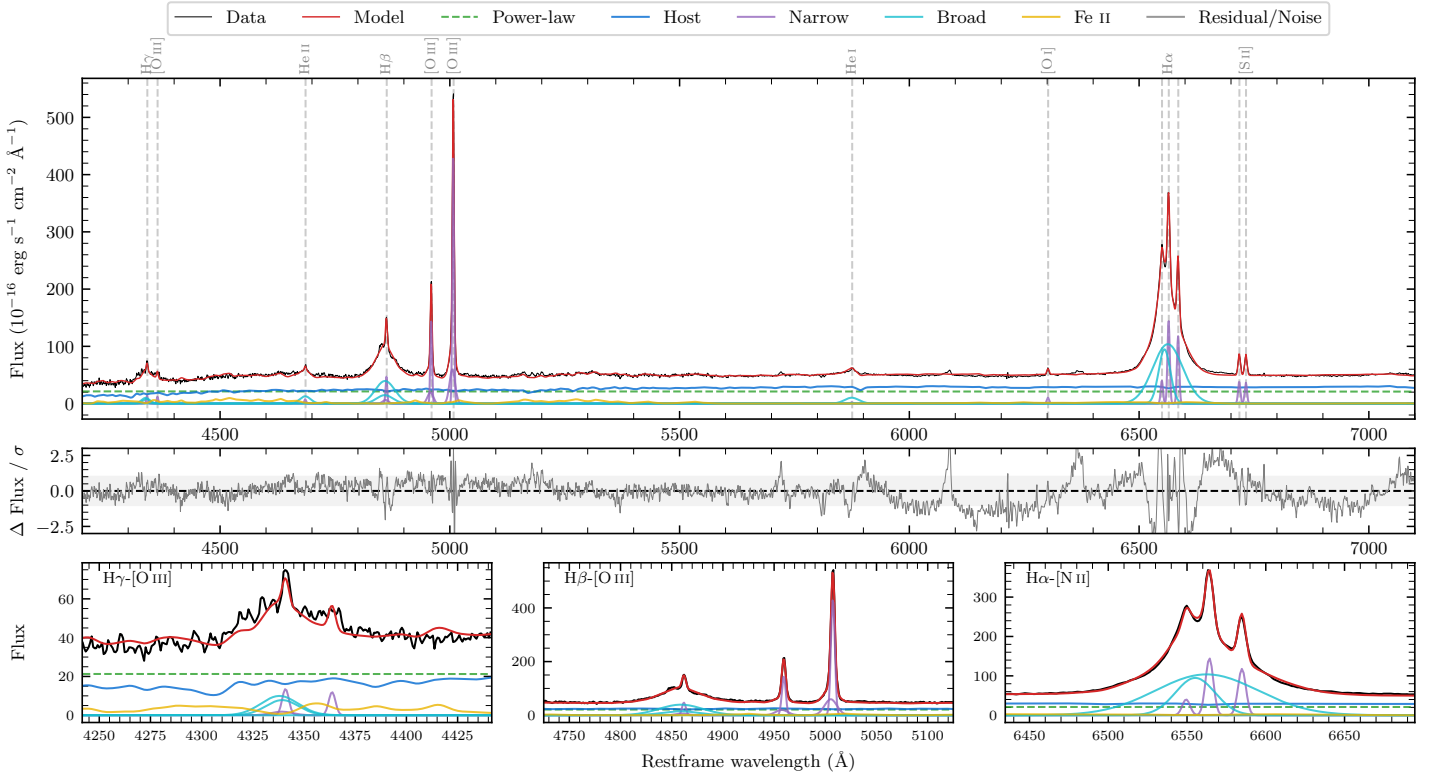
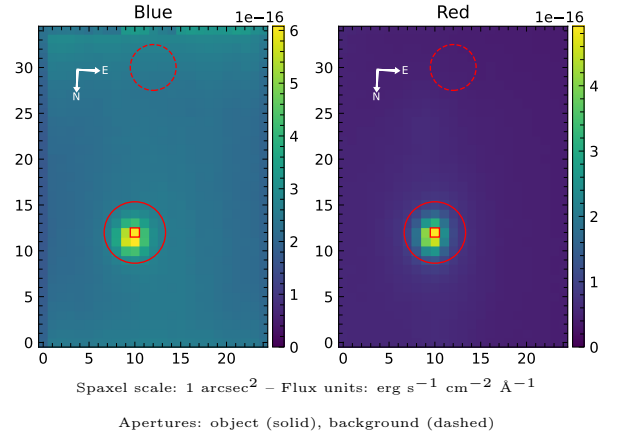


# ESO 140-43

Spectrum ID	478399456_sp3	Spectrum Type	Sy 1.5
Alt name	g1844540-622153	Quality Flag	good
$z$	0.0140	AGN reference	6dFGS
RA, Dec	281.2249, -62.3647	MW $E(B - V)$	0.093
MJD	59501.4	Power law $\alpha_\nu$	$-1.97 \pm 0.03$
SNR/Å B/R	9.8/26.2	$\log L_{5100, \text{AGN}}$	$42.69 \pm 0.03$
Obs Airmass	1.26	$\log H\beta_{\text{Br}}/[\text{O III}]$	$-0.03 \pm 0.04$
SMSS ID	478399456	$\log M_{L5100}/M_\odot$	$7.27 \pm 0.09$
Closest SMSS	None < 15"	$\log M_{\text{H}\alpha}/M_\odot$	$6.99 \pm 0.03$
SMSS Mean $r_{\text{psf}}$	$14.1 \pm 0.1$	$\log M_{\text{H}\beta}/M_\odot$	$7.36 \pm 0.10$
2MASS $K_{\text{ext}}$	$9.7 \pm 0.0$	$\log M_{[\text{O III}]} / M_\odot$	$7.51 \pm 0.09$



## Emission Line Measurements

Line	$\log L$ (erg s <sup>-1</sup> )	FWHM (km s <sup>-1</sup> )	$\sigma$ (km s <sup>-1</sup> )	EW (Å)
H $\gamma$ Narrow	$39.58 \pm 0.18$	$297 \pm 63$	$227 \pm 56$	$3.82 \pm 1.13$
<b>H<math>\gamma</math> Broad</b>	<b><math>40.28 \pm 0.11</math></b>	<b><math>1498 \pm 264</math></b>	<b><math>524 \pm 103</math></b>	<b><math>18.11 \pm 1.56</math></b>
[O III] 4364	$39.35 \pm 0.21$	$269 \pm 63$	$114 \pm 25$	$2.36 \pm 0.66$
He II Narrow	$39.19 \pm 0.24$	$269 \pm 63$	$114 \pm 25$	$1.65 \pm 0.50$
He II Broad	$40.25 \pm 0.12$	$1758 \pm 558$	$746 \pm 237$	$17.85 \pm 1.29$
H $\beta$ Narrow	$40.16 \pm 0.07$	$297 \pm 63$	$227 \pm 56$	$14.96 \pm 0.85$
<b>H<math>\beta</math> Broad</b>	<b><math>41.11 \pm 0.03</math></b>	<b><math>2933 \pm 284</math></b>	<b><math>1099 \pm 141</math></b>	<b><math>132.10 \pm 1.68</math></b>
[O III] 5007	$41.13 \pm 0.02$	$297 \pm 63$	$227 \pm 56$	$142.26 \pm 0.86$
He I Narrow	$38.73 \pm 0.31$	$269 \pm 63$	$114 \pm 25$	$0.58 \pm 0.22$
He I Broad	$40.26 \pm 0.09$	$1875 \pm 310$	$796 \pm 131$	$19.29 \pm 0.62$
[O I] 6300	$39.45 \pm 0.06$	$269 \pm 63$	$114 \pm 25$	$2.98 \pm 0.22$
H $\alpha$ Narrow	$40.61 \pm 0.01$	$269 \pm 63$	$114 \pm 25$	$43.62 \pm 0.34$
<b>H<math>\alpha</math> Broad</b>	<b><math>41.72 \pm 0.01</math></b>	<b><math>2137 \pm 66</math></b>	<b><math>1058 \pm 25</math></b>	<b><math>553.38 \pm 0.94</math></b>
[N II] 6585	$40.52 \pm 0.01$	$269 \pm 63$	$114 \pm 25$	$35.62 \pm 0.29$
[S II] 6718	$40.04 \pm 0.01$	$269 \pm 63$	$114 \pm 25$	$11.85 \pm 0.22$
[S II] 6732	$40.02 \pm 0.02$	$269 \pm 63$	$114 \pm 25$	$11.28 \pm 0.24$

## Emission Summary

H $\alpha$ Broad SNR	40.11
H $\beta$ Broad SNR	11.19
H $\gamma$ Broad SNR	3.55
AGN frac	0.48
Host frac	0.52
$\log L_{5100, \text{Host}}$	42.73
Fe II/H $\beta$	0.60
Fe II/[O III]	0.56

## Quality Flags

spurious_hab/hbb	0/0
15100	1
balmer	0
balmer_snr	0
hb_width	0
balmer_width	0