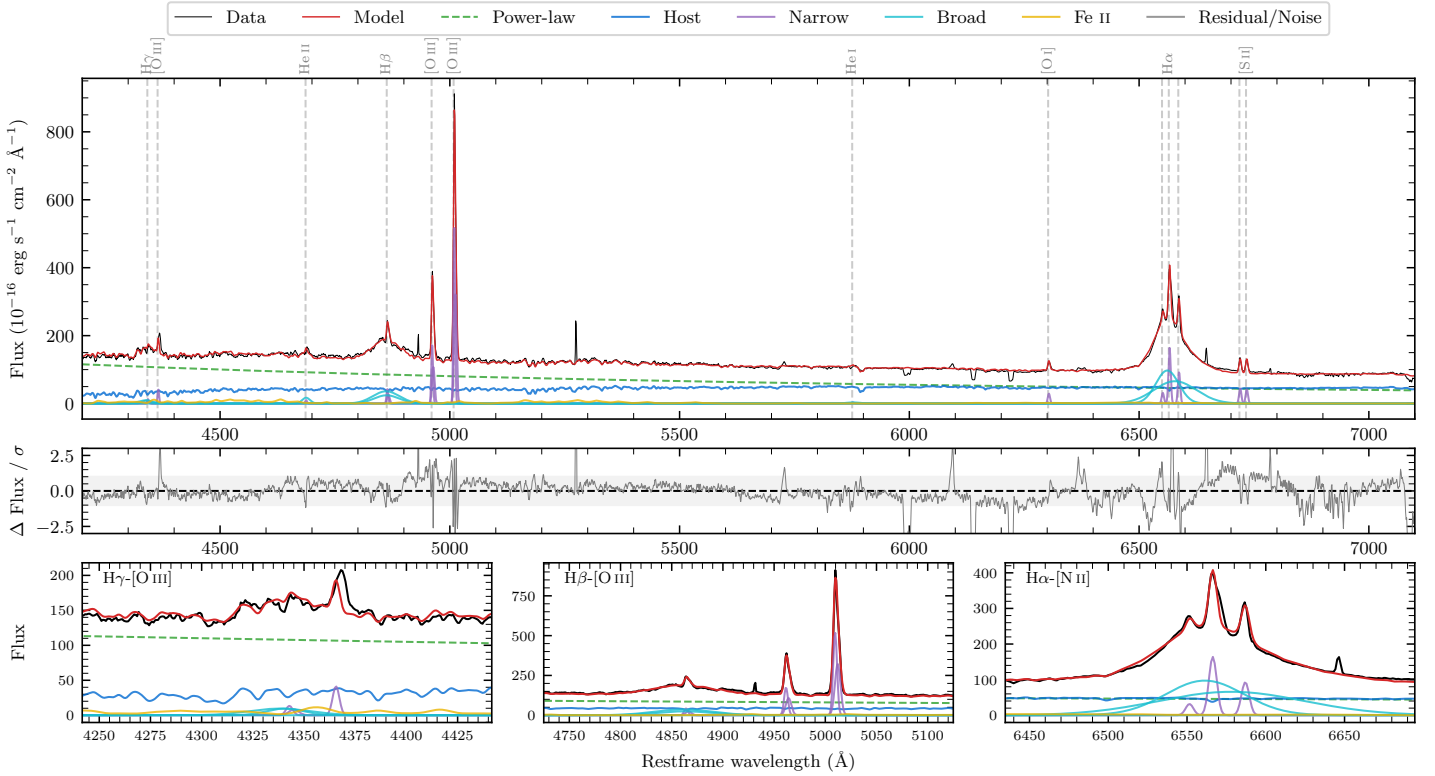
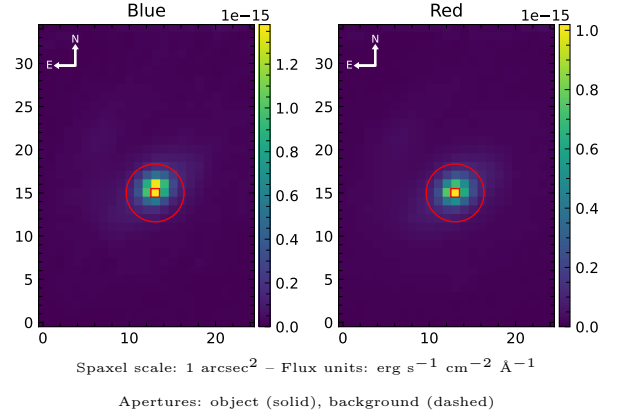


# ESO 362-18

Spectrum ID	19807012_sp1	Spectrum Type	Sy 1.5
Alt name	ESO362-G18	Quality Flag	good
$z$	0.0127	AGN reference	<b>S7</b>
RA, Dec	79.8992, -32.6575	MW $E(B-V)$	0.015
MJD	60650.5	Power law $\alpha_\nu$	$0.07 \pm 0.11$
SNR/ $\text{\AA}$ B/R	14.0/20.1	$\log L_{5100, \text{AGN}}$	$43.13 \pm 0.02$
Obs Airmass	1.15	$\log H\beta_{\text{Br}}/[\text{O III}]$	$-0.02 \pm 0.06$
SMSS ID	<b>19807012</b>	$\log M_{L5100}/M_\odot$	$7.75 \pm 0.06$
Closest SMSS	10.33", <b>2041562347</b>	$\log M_{\text{H}\alpha}/M_\odot$	$7.37 \pm 0.07$
SMSS Mean $r_{\text{psf}}$	$13.1 \pm 0.1$	$\log M_{\text{H}\beta}/M_\odot$	$7.69 \pm 0.08$
2MASS $K_{\text{ext}}$	$10.0 \pm 0.0$	$\log M_{[\text{O III}]} / M_\odot$	$7.83 \pm 0.06$



## Emission Line Measurements

Line	$\log L$ (erg s $^{-1}$ )	FWHM (km s $^{-1}$ )	$\sigma$ (km s $^{-1}$ )	EW ( $\text{\AA}$ )
H $\gamma$ Narrow	$39.58 \pm 0.24$	$349 \pm 63$	$159 \pm 25$	$0.99 \pm 0.28$
<b>H<math>\gamma</math> Broad</b>	<b><math>40.26 \pm 0.18</math></b>	<b><math>1899 \pm 548</math></b>	<b><math>758 \pm 146</math></b>	<b><math>5.37 \pm 0.71</math></b>
[O III] 4364	$39.78 \pm 0.14$	$271 \pm 63$	$113 \pm 25$	$1.63 \pm 0.25$
He II Narrow	$39.20 \pm 0.35$	$271 \pm 63$	$113 \pm 25$	$0.51 \pm 0.22$
He II Broad	$40.17 \pm 0.16$	$1282 \pm 187$	$544 \pm 79$	$4.03 \pm 0.49$
H $\beta$ Narrow	$40.12 \pm 0.07$	$349 \pm 63$	$159 \pm 25$	$4.41 \pm 0.31$
<b>H<math>\beta</math> Broad</b>	<b><math>41.19 \pm 0.06</math></b>	<b><math>4065 \pm 282</math></b>	<b><math>1520 \pm 279</math></b>	<b><math>50.79 \pm 0.94</math></b>
[O III] 5007	$41.21 \pm 0.01$	$349 \pm 63$	$159 \pm 25$	$58.99 \pm 0.40$
He I Narrow	$38.83 \pm 0.38$	$271 \pm 63$	$113 \pm 25$	$0.34 \pm 0.24$
He I Broad	$39.67 \pm 0.21$	$1692 \pm 241$	$718 \pm 102$	$2.22 \pm 0.59$
[O I] 6300	$39.79 \pm 0.05$	$271 \pm 63$	$113 \pm 25$	$3.58 \pm 0.27$
H $\alpha$ Narrow	$40.55 \pm 0.04$	$271 \pm 63$	$113 \pm 25$	$22.59 \pm 0.41$
<b>H<math>\alpha</math> Broad</b>	<b><math>41.68 \pm 0.01</math></b>	<b><math>3393 \pm 268</math></b>	<b><math>1437 \pm 102</math></b>	<b><math>303.40 \pm 1.27</math></b>
[N II] 6585	$40.30 \pm 0.03$	$271 \pm 63$	$113 \pm 25$	$12.91 \pm 0.38$
[S II] 6718	$40.00 \pm 0.04$	$271 \pm 63$	$113 \pm 25$	$6.62 \pm 0.26$
[S II] 6732	$39.97 \pm 0.03$	$271 \pm 63$	$113 \pm 25$	$6.22 \pm 0.27$

## Emission Summary

H $\alpha$ Broad SNR	16.62
H $\beta$ Broad SNR	6.19
H $\gamma$ Broad SNR	1.68
AGN frac	0.66
Host frac	0.34
$\log L_{5100, \text{Host}}$	42.84
Fe II/H $\beta$	0.52
Fe II/[O III]	0.47

## Quality Flags

spurious_hab/hbb	0/0
15100	0
balmer	0
balmer_snr	1
hb_width	0
balmer_width	0