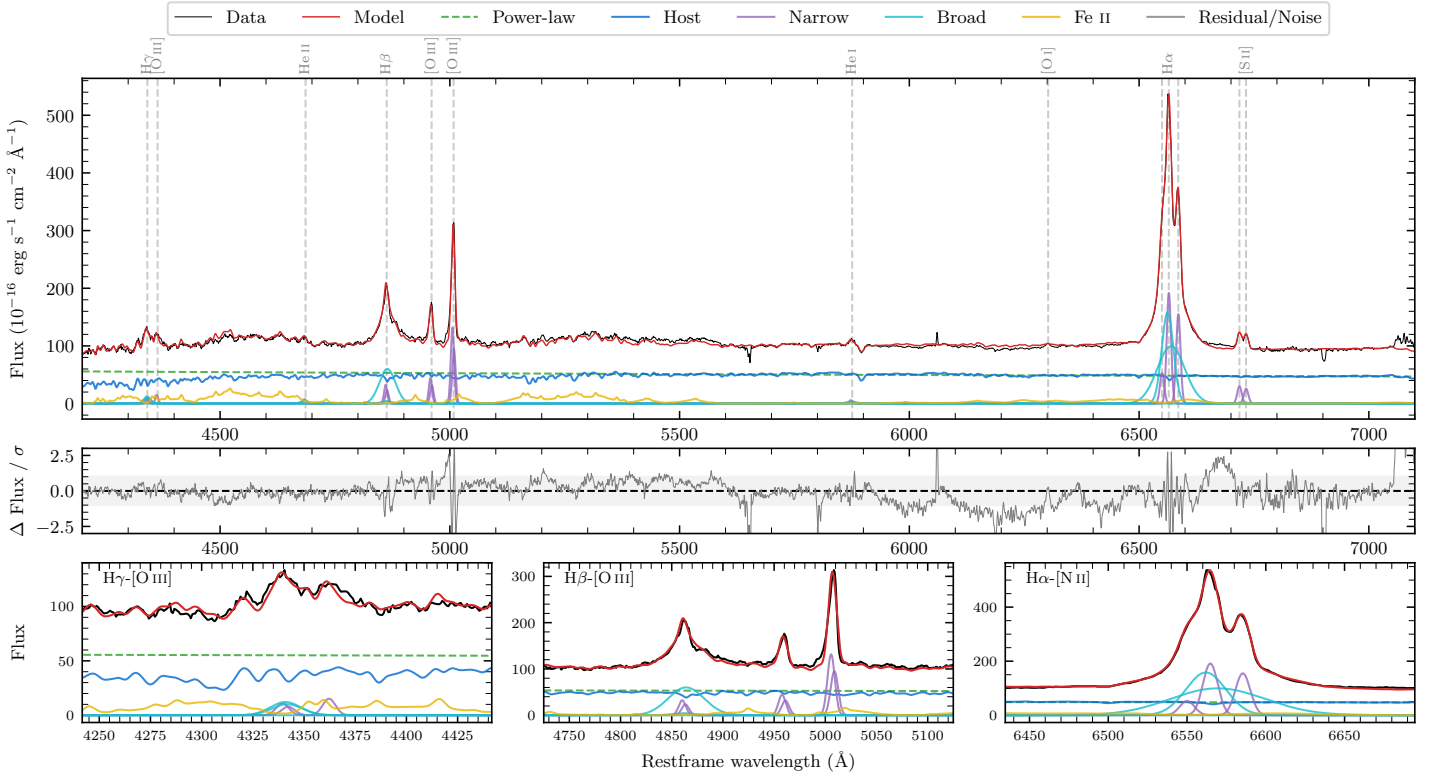
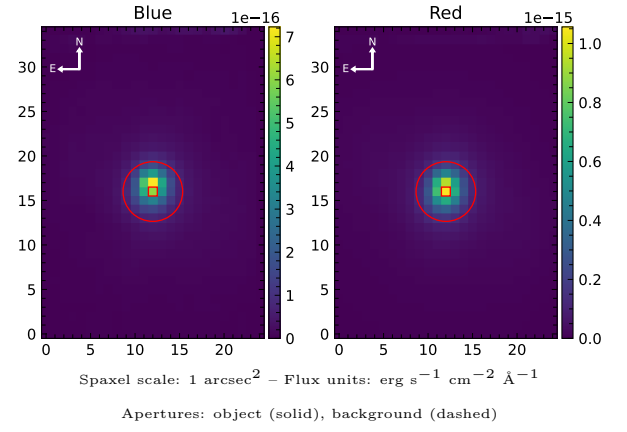


MCG-07-27-032

| | | | |
|----------------------------|--------------------------|--|------------------|
| Spectrum ID | 95691489_sp1 | Spectrum Type | Sy 1.5 |
| Alt name | ESO323-G77 | Quality Flag | good |
| z | 0.0157 | AGN reference | S7 |
| RA, Dec | 196.6092, -40.4144 | MW $E(B - V)$ | 0.086 |
| MJD | 60768.44 | Power law α_ν | -1.67 ± 0.04 |
| SNR/ \AA B/R | 13.5/29.9 | $\log L_{5100, \text{AGN}}$ | 43.16 ± 0.01 |
| Obs Airmass | 1.48 | $\log H\beta_{\text{Br}}/[\text{O III}]$ | 0.15 ± 0.03 |
| SMSS ID | 95691489 | $\log M_{L5100}/M_\odot$ | 7.34 ± 0.06 |
| Closest SMSS | 3.38", 2156470043 | $\log M_{\text{H}\alpha}/M_\odot$ | 6.91 ± 0.04 |
| SMSS Mean r_{psf} | 13.1 ± 0.3 | $\log M_{\text{H}\beta}/M_\odot$ | 7.27 ± 0.07 |
| 2MASS K_{ext} | 8.8 ± 0.0 | $\log M_{[\text{O III}]} / M_\odot$ | 7.34 ± 0.07 |



Emission Line Measurements

| Line | $\log L$ (erg s $^{-1}$) | FWHM (km s $^{-1}$) | σ (km s $^{-1}$) | EW (\AA) |
|-----------------------------------|------------------------------------|----------------------------------|--------------------------------|-------------------------------------|
| H γ Narrow | 39.90 ± 0.31 | 559 ± 64 | 235 ± 26 | 2.74 ± 0.58 |
| Hγ Broad | 40.46 ± 0.11 | 1201 ± 107 | 457 ± 45 | 7.60 ± 0.85 |
| [O III] 4364 | 39.82 ± 0.19 | 507 ± 65 | 214 ± 26 | 2.19 ± 0.54 |
| He II Narrow | 39.56 ± 0.31 | 507 ± 65 | 214 ± 26 | 1.24 ± 0.41 |
| He II Broad | 39.82 ± 0.27 | 1183 ± 77 | 502 ± 32 | 2.11 ± 0.63 |
| H β Narrow | 40.43 ± 0.08 | 559 ± 64 | 235 ± 26 | 9.42 ± 0.46 |
| Hβ Broad | 41.20 ± 0.03 | 2509 ± 176 | 924 ± 82 | 52.65 ± 0.95 |
| [O III] 5007 | 41.06 ± 0.01 | 559 ± 64 | 235 ± 26 | 39.77 ± 0.46 |
| He I Narrow | 39.55 ± 0.21 | 507 ± 65 | 214 ± 26 | 1.29 ± 0.22 |
| He I Broad | 39.80 ± 0.18 | 1207 ± 214 | 512 ± 90 | 1.89 ± 0.33 |
| [O I] 6300 | 39.32 ± 0.19 | 507 ± 65 | 214 ± 26 | 0.79 ± 0.21 |
| H α Narrow | 41.10 ± 0.02 | 507 ± 65 | 214 ± 26 | 47.69 ± 0.39 |
| Hα Broad | 41.84 ± 0.01 | 1788 ± 75 | 862 ± 25 | 264.52 ± 0.69 |
| [N II] 6585 | 41.01 ± 0.02 | 507 ± 65 | 214 ± 26 | 38.79 ± 0.36 |
| [S II] 6718 | 40.30 ± 0.02 | 507 ± 65 | 214 ± 26 | 7.72 ± 0.24 |
| [S II] 6732 | 40.24 ± 0.03 | 507 ± 65 | 214 ± 26 | 6.71 ± 0.24 |

Emission Summary

| | |
|------------------------------|-------|
| H α Broad SNR | 32.64 |
| H β Broad SNR | 8.19 |
| H γ Broad SNR | 3.25 |
| AGN frac | 0.53 |
| Host frac | 0.47 |
| $\log L_{5100, \text{Host}}$ | 43.11 |
| Fe II/H β | 1.52 |
| Fe II/[O III] | 2.03 |

Quality Flags

| | |
|------------------|-----|
| spurious_hab/hbb | 0/0 |
| 15100 | 0 |
| balmer | 0 |
| balmer_snr | 0 |
| hb_width | 0 |
| balmer_width | 0 |