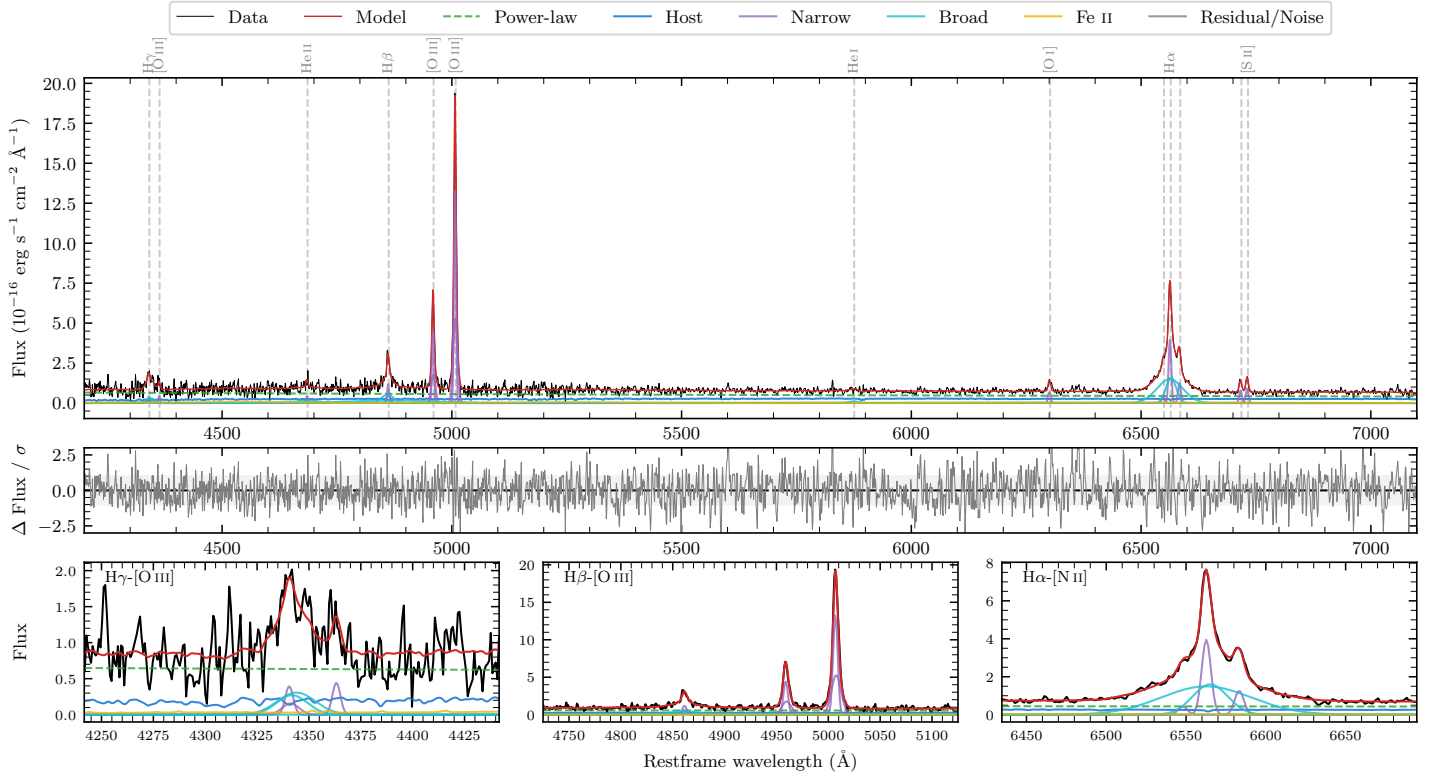
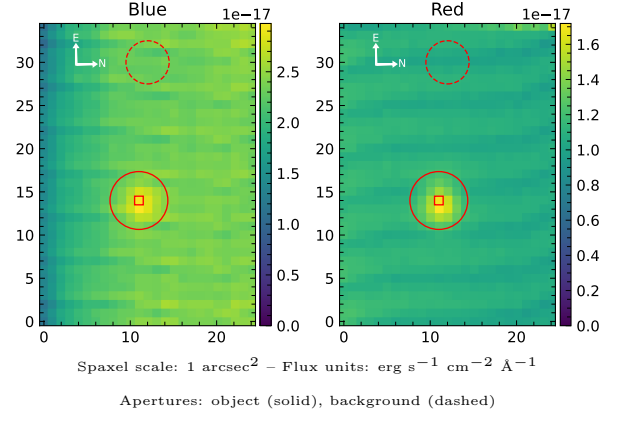


6dFGS gJ235457.7-054017

Spectrum ID	8609351_sp2	Spectrum Type	Sy 1.5
Alt name	g2354577-054017	Quality Flag	good
z	0.0806	AGN reference	6dFGS
RA, Dec	358.7402, -5.6713	MW $E(B - V)$	0.026
MJD	59426.62	Power law α_ν	-1.11 ± 0.19
SNR/ \AA B/R	3.9/7.4	$\log L_{5100, \text{AGN}}$	42.66 ± 0.04
Obs Airmass	1.36	$\log H\beta_{\text{Br}}/[\text{O III}]$	-0.41 ± 0.05
SMSS ID	8609351	$\log M_{L5100}/M_\odot$	7.03 ± 0.08
Closest SMSS	None $< 15''$	$\log M_{\text{H}\alpha}/M_\odot$	6.63 ± 0.04
SMSS Mean r_{psf}	18.0 ± 0.0	$\log M_{\text{H}\beta}/M_\odot$	7.07 ± 0.09
2MASS K_{ext}	nan \pm nan	$\log M_{[\text{O III}]} / M_\odot$	7.40 ± 0.08



Emission Line Measurements

Line	$\log L$ (erg s $^{-1}$)	FWHM (km s $^{-1}$)	σ (km s $^{-1}$)	EW (\AA)
H γ Narrow	39.78 ± 0.22	372 ± 63	213 ± 25	5.93 ± 1.57
Hγ Broad	40.36 ± 0.10	1377 ± 125	500 ± 42	20.68 ± 2.68
[O III] 4364	39.57 ± 0.20	317 ± 63	132 ± 25	3.67 ± 1.47
He II Narrow	39.59 ± 0.19	317 ± 63	132 ± 25	4.04 ± 1.00
He II Broad	40.19 ± 0.16	3304 ± 79	1403 ± 32	16.29 ± 3.37
H β Narrow	40.31 ± 0.05	372 ± 63	213 ± 25	22.22 ± 1.46
Hβ Broad	40.96 ± 0.05	2250 ± 193	3111 ± 171	100.05 ± 6.97
[O III] 5007	41.37 ± 0.01	372 ± 63	213 ± 25	261.32 ± 1.70
He I Narrow	—	—	—	—
He I Broad	39.66 ± 0.15	1180 ± 62	500 ± 25	5.86 ± 1.14
[O I] 6300	39.92 ± 0.04	317 ± 63	132 ± 25	11.29 ± 0.58
H α Narrow	40.70 ± 0.01	317 ± 63	132 ± 25	70.51 ± 0.69
Hα Broad	41.42 ± 0.01	1742 ± 72	872 ± 25	368.62 ± 1.98
[N II] 6585	40.20 ± 0.02	317 ± 63	132 ± 25	22.63 ± 0.64
[S II] 6718	40.00 ± 0.03	317 ± 63	132 ± 25	14.27 ± 0.71
[S II] 6732	40.07 ± 0.03	317 ± 63	132 ± 25	17.16 ± 0.77

Emission Summary

H α Broad SNR	13.92
H β Broad SNR	3.17
H γ Broad SNR	2.77
AGN frac	0.72
Host frac	0.28
$\log L_{5100, \text{Host}}$	42.25
Fe II/H β	0.35
Fe II/[O III]	0.14

Quality Flags

spurious_hab/hbb	0/0
15100	0
balmer	0
balmer_snr	1
hb_width	2
balmer_width	0