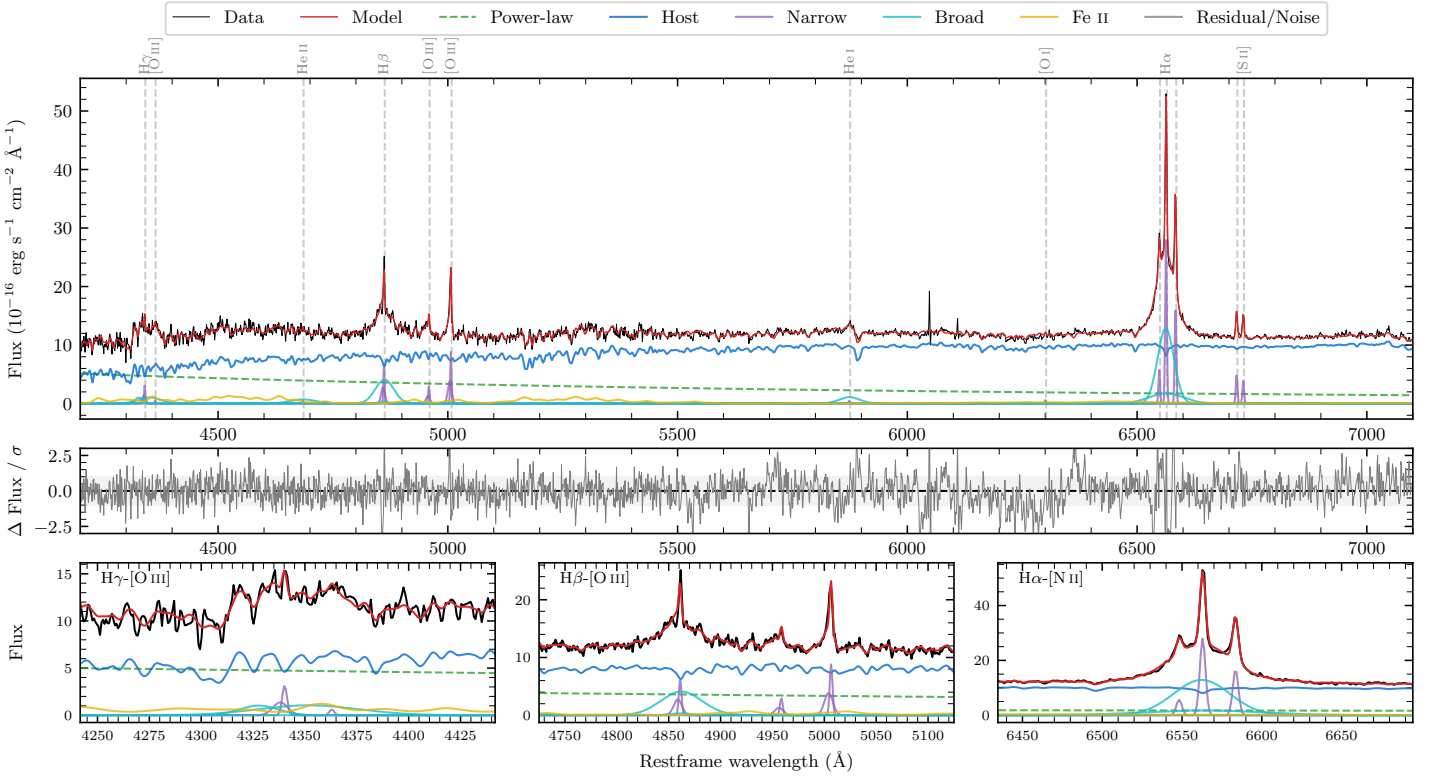
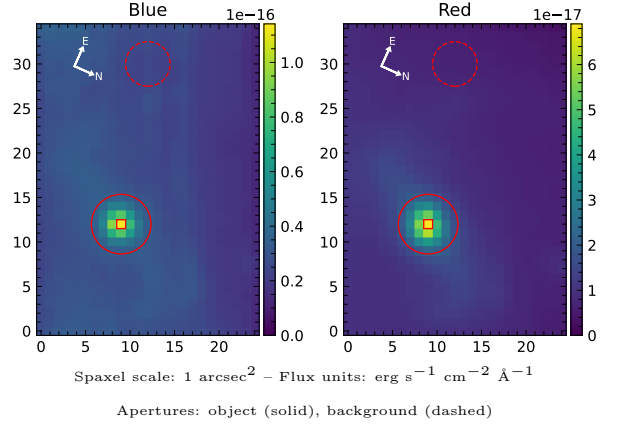


MCG-03-34-010

Spectrum ID	105550166_sp1	Spectrum Type	Sy 1.2
Alt name	g1311381-162346	Quality Flag	good
z	0.0414	AGN reference	6dFGS
RA, Dec	197.9088, -16.3960	MW $E(B - V)$	0.068
MJD	59019.48	Power law α_ν	0.43 ± 0.06
SNR/ \AA B/R	18.7/37.7	$\log L_{5100, \text{AGN}}$	42.82 ± 0.02
Obs Airmass	1.20	$\log H\beta_{\text{Br}}/[\text{O III}]$	0.50 ± 0.02
SMSS ID	105550166	$\log M_{L5100}/M_\odot$	7.30 ± 0.04
Closest SMSS	8.92", 2171927771	$\log M_{\text{H}\alpha}/M_\odot$	6.82 ± 0.03
SMSS Mean r_{psf}	16.1 ± 0.1	$\log M_{\text{H}\beta}/M_\odot$	7.27 ± 0.06
2MASS K_{ext}	11.8 ± 0.1	$\log M_{[\text{O III}]} / M_\odot$	7.15 ± 0.06



Emission Line Measurements

Line	$\log L$ (erg s ⁻¹)	FWHM (km s ⁻¹)	σ (km s ⁻¹)	EW (Å)
H γ Narrow	39.96 ± 0.07	246 ± 63	206 ± 28	4.69 ± 0.51
Hγ Broad	40.57 ± 0.06	3496 ± 623	1420 ± 69	19.42 ± 1.34
[O III] 4364	38.87 ± 0.37	201 ± 62	81 ± 25	0.39 ± 0.27
He II Narrow	38.86 ± 0.34	201 ± 62	81 ± 25	0.46 ± 0.27
He II Broad	40.34 ± 0.08	4244 ± 175	1802 ± 74	13.49 ± 1.38
H β Narrow	40.31 ± 0.03	246 ± 63	206 ± 28	13.92 ± 0.54
Hβ Broad	40.97 ± 0.02	2816 ± 118	1054 ± 38	62.12 ± 1.24
[O III] 5007	40.47 ± 0.02	246 ± 63	206 ± 28	21.66 ± 0.57
He I Narrow	38.89 ± 0.23	201 ± 62	81 ± 25	0.84 ± 0.28
He I Broad	40.43 ± 0.03	2711 ± 121	1151 ± 51	28.69 ± 1.06
[O I] 6300	39.03 ± 0.15	201 ± 62	81 ± 25	1.38 ± 0.32
H α Narrow	40.72 ± 0.01	201 ± 62	81 ± 25	75.09 ± 0.50
Hα Broad	41.49 ± 0.01	2041 ± 65	852 ± 27	443.46 ± 1.86
[N II] 6585	40.50 ± 0.01	201 ± 62	81 ± 25	45.16 ± 0.45
[S II] 6718	39.98 ± 0.02	201 ± 62	81 ± 25	14.49 ± 0.40
[S II] 6732	39.87 ± 0.03	201 ± 62	81 ± 25	11.29 ± 0.40

Emission Summary

H α Broad SNR	23.54
H β Broad SNR	7.19
H γ Broad SNR	2.74
AGN frac	0.29
Host frac	0.71
$\log L_{5100, \text{Host}}$	43.20
Fe II/H β	1.29
Fe II/[O III]	3.96

Quality Flags

spurious_hab/hbb	0/0
15100	2
balmer	0
balmer_snr	1
hb_width	0
balmer_width	0