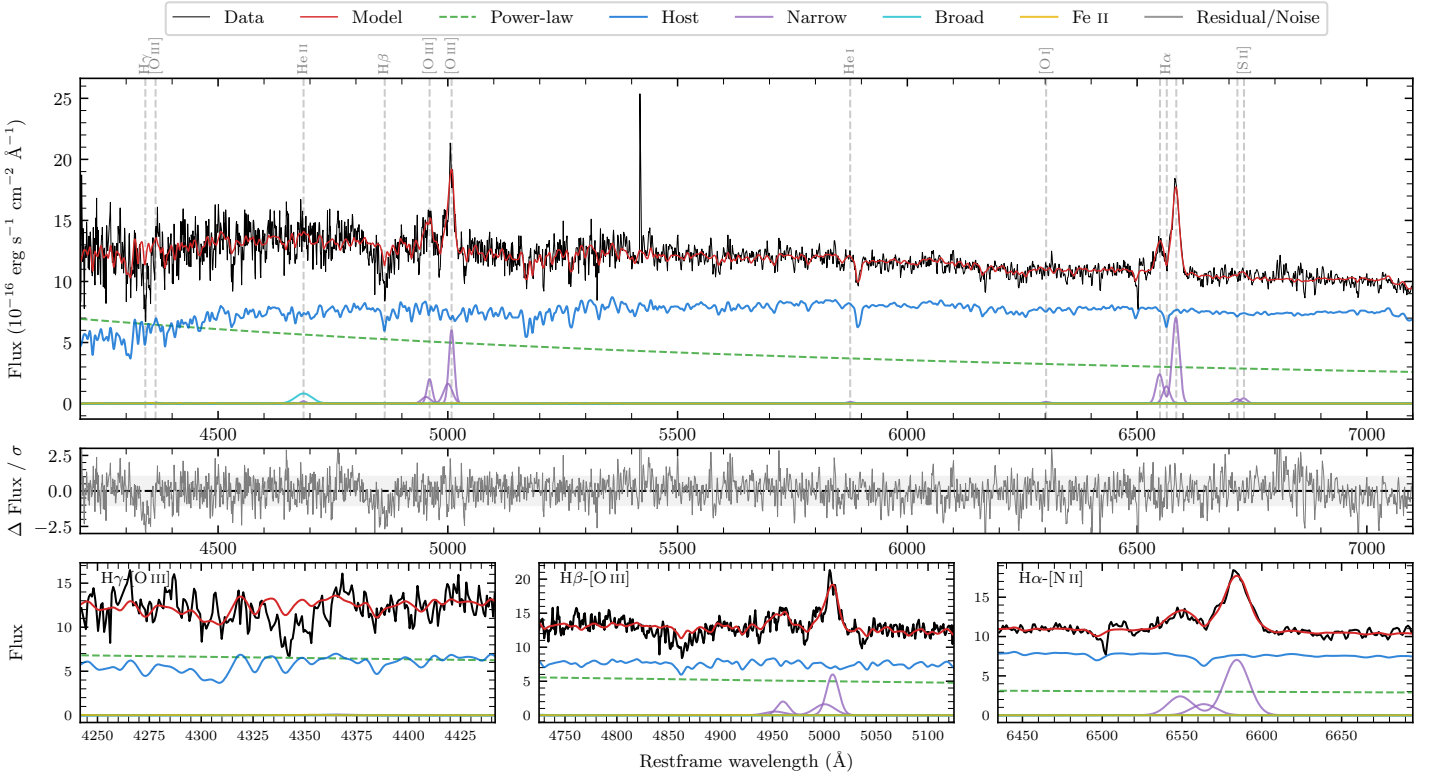
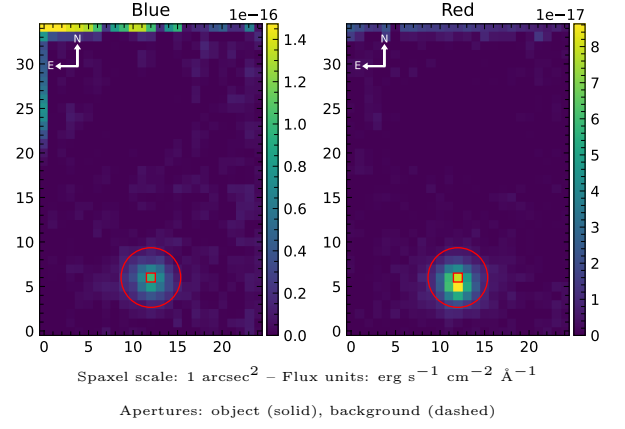


2459596967190824832

Spectrum ID	14418709_sp1	Spectrum Type	SF
Alt name	2459596967190824832	Quality Flag	good
z	0.0566	AGN reference	ALIBRICQS2
RA, Dec	29.8937, -12.4164	MW $E(B-V)$	0.015
MJD	60950.57	Power law α_ν	-0.12 ± 0.03
SNR/ \AA B/R	11.4/21.6	$\log L_{5100, \text{AGN}}$	43.27 ± 0.01
Obs Airmass	1.14	$\log H\beta_{\text{Br}}/[\text{O III}]$	—
SMSS ID	14418709	$\log M_{L5100}/M_\odot$	—
Closest SMSS	None $< 15''$	$\log M_{\text{H}\alpha}/M_\odot$	—
SMSS Mean r_{psf}	15.9 ± 0.0	$\log M_{\text{H}\beta}/M_\odot$	—
2MASS K_{ext}	13.2 ± 0.1	$\log M_{[\text{O III}]} / M_\odot$	—



Emission Line Measurements

Line	$\log L$ (erg s ⁻¹)	FWHM (km s ⁻¹)	σ (km s ⁻¹)	EW (Å)
H γ Narrow	—	—	—	—
Hγ Broad	—	—	—	—
[O III] 4364	—	—	—	—
He II Narrow	—	—	—	—
He II Broad	40.48 ± 0.14	2743 ± 62	1164 ± 25	7.06 ± 1.39
H β Narrow	—	—	—	—
Hβ Broad	—	—	—	—
[O III] 5007	41.02 ± 0.02	935 ± 67	485 ± 29	27.15 ± 1.04
He I Narrow	39.30 ± 0.48	832 ± 62	353 ± 25	0.71 ± 0.58
He I Broad	—	—	—	—
[O I] 6300	39.32 ± 0.42	832 ± 62	353 ± 25	0.84 ± 0.61
H α Narrow	40.35 ± 0.06	832 ± 62	353 ± 25	9.65 ± 0.77
Hα Broad	—	—	—	—
[N II] 6585	41.04 ± 0.01	832 ± 62	353 ± 25	48.49 ± 0.79
[S II] 6718	39.78 ± 0.21	832 ± 62	353 ± 25	2.73 ± 0.77
[S II] 6732	39.84 ± 0.18	832 ± 62	353 ± 25	3.14 ± 0.77

Emission Summary

H α Broad SNR	0.00
H β Broad SNR	0.00
H γ Broad SNR	0.00
AGN frac	0.40
Host frac	0.60
$\log L_{5100, \text{Host}}$	43.44
Fe II/H β	—
Fe II/[O III]	—

Quality Flags

spurious_hab/hbb	0/0
15100	1
balmer	2
balmer_snr	2
hb_width	2
balmer_width	2