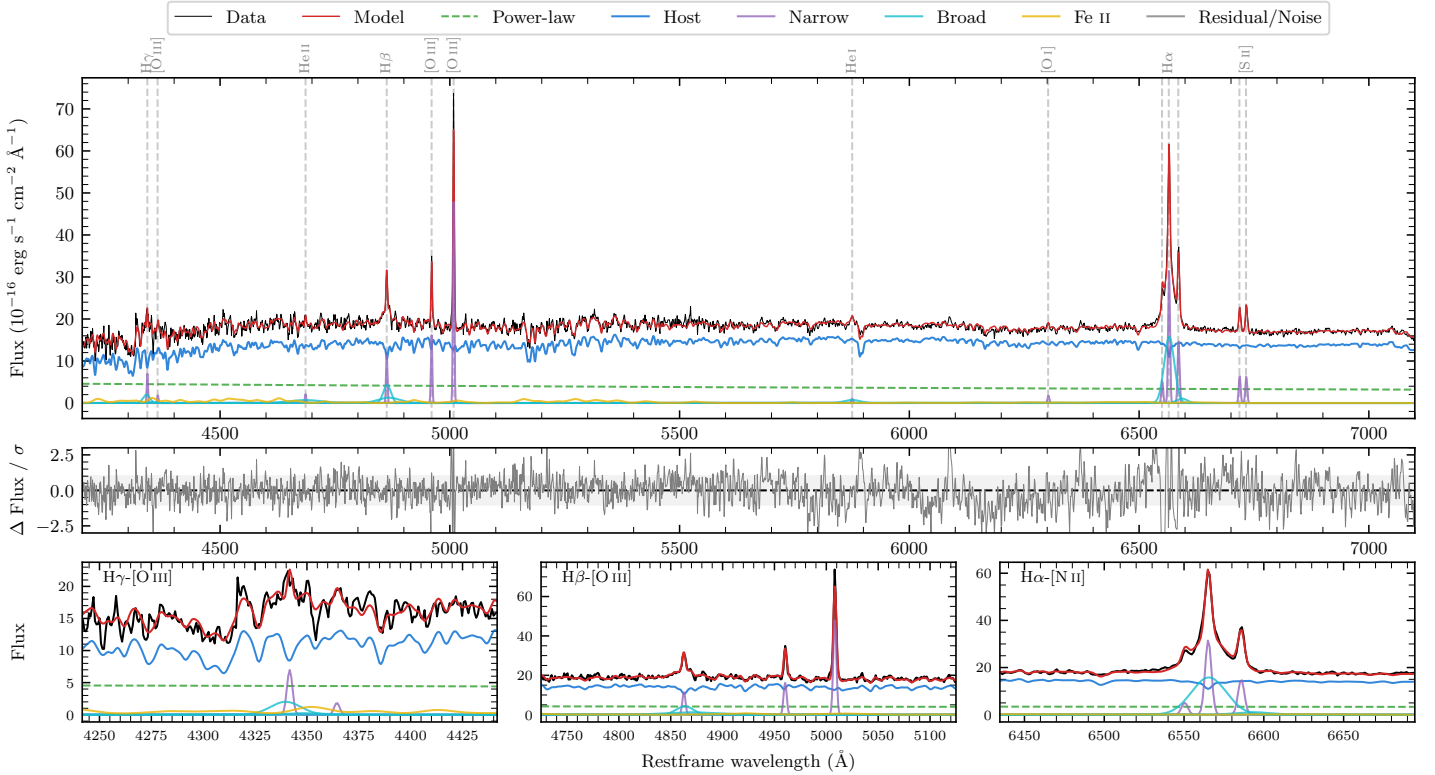
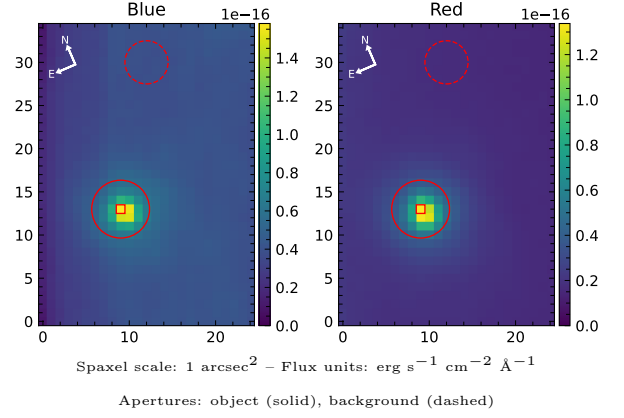


LEDA 668611

Spectrum ID	98616917_sp1	Spectrum type	Sy 1.5
Alt name	g1342426-335945	Quality flag	good
z	0.0188	AGN reference	6dFGS
RA, Dec	205.6775, -33.9958	MW $E(B - V)$	0.042
MJD	59353.42	Power law α_ν	-1.31 ± 0.07
SNR/ \AA B/R	17.3/38.1	$\log L_{5100, \text{AGN}}$	42.21 ± 0.02
Obs airmass	1.11	$\log H\beta_{\text{Br}}/[\text{O III}]$	-0.06 ± 0.03
SMSS ID	98616917	$\log M_{L5100}/M_\odot$	6.42 ± 0.06
Neighbour	12.5", 2160882672	$\log M_{\text{H}\alpha}/M_\odot$	5.80 ± 0.07
SMSS $\langle r_{6'' \text{ap}} \rangle$	15.59 ± 0.06	$\log M_{\text{H}\beta}/M_\odot$	6.27 ± 0.09
2MASS K_{ext}	11.94 ± 0.10	$\log M_{[\text{O III}]} / M_\odot$	6.39 ± 0.08



Emission Line Measurements

Line	$\log L$ (erg s ⁻¹)	FWHM (km s ⁻¹)	σ (km s ⁻¹)	EW (Å)
H γ Narrow	39.28 ± 0.09	217 ± 62	99 ± 26	5.32 ± 0.97
Hγ Broad	39.55 ± 0.12	1240 ± 82	446 ± 35	9.43 ± 1.69
[O III] 4364	38.70 ± 0.26	219 ± 62	91 ± 25	1.40 ± 0.56
He II Narrow	38.78 ± 0.19	219 ± 62	91 ± 25	1.79 ± 0.46
He II Broad	39.71 ± 0.11	5228 ± 72	2220 ± 29	14.86 ± 2.30
H β Narrow	39.56 ± 0.04	217 ± 62	99 ± 26	10.84 ± 0.76
Hβ Broad	40.12 ± 0.03	1382 ± 81	699 ± 59	39.94 ± 1.80
[O III] 5007	40.18 ± 0.01	217 ± 62	99 ± 26	46.87 ± 0.78
He I Narrow	38.62 ± 0.14	219 ± 62	91 ± 25	1.44 ± 0.27
He I Broad	39.41 ± 0.07	2030 ± 73	862 ± 30	8.85 ± 0.85
[O I] 6300	38.84 ± 0.08	219 ± 62	91 ± 25	2.48 ± 0.28
H α Narrow	40.11 ± 0.01	219 ± 62	91 ± 25	47.82 ± 0.33
Hα Broad	40.58 ± 0.01	1203 ± 63	436 ± 25	140.38 ± 0.79
[N II] 6585	39.78 ± 0.01	219 ± 62	91 ± 25	22.69 ± 0.31
[S II] 6718	39.43 ± 0.02	219 ± 62	91 ± 25	10.10 ± 0.30
[S II] 6732	39.42 ± 0.02	219 ± 62	91 ± 25	9.92 ± 0.33

Emission Summary

H α broad SNR	15.10
H β broad SNR	5.32
H γ broad SNR	2.11
AGN frac	0.24
Host frac	0.76
$\log L_{5100, \text{Host}}$	42.72
Fe II/H β	1.25
Fe II/[O III]	1.09

Quality Flags

spurious_hab/hbb	0/0
15100	1
balmer	0
balmer_snr	1
hb_width	1
balmer_width	0