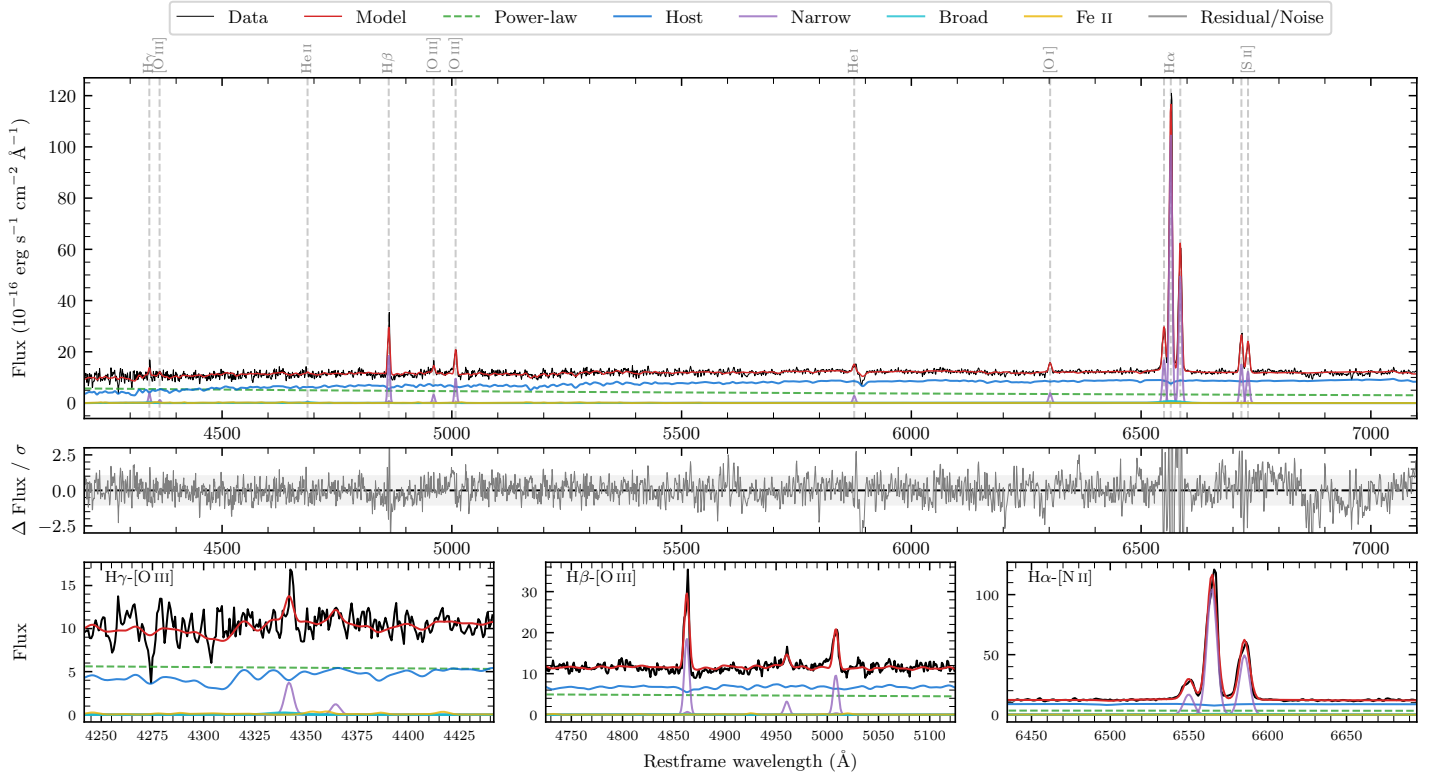
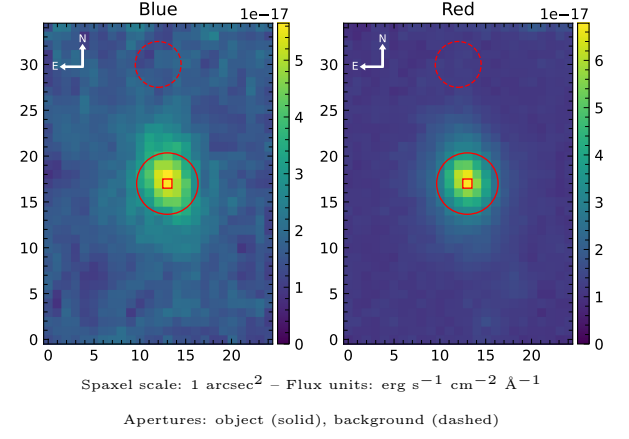


LEDA 88903

Spectrum ID	98608298_sp1	Spectrum type	Sy 2
Alt name	IRAS 13317-3312	Quality flag	good
z	0.0460	AGN reference	PGC
RA, Dec	203.6634, -33.4579	MW $E(B - V)$	0.049
MJD	61063.74	Power law α_ν	-0.80 ± 0.17
SNR/ \AA B/R	7.9/16.4	$\log L_{5100, \text{AGN}}$	43.06 ± 0.03
Obs airmass	1.08	$\log H\beta_{\text{Br}}/[\text{O III}]$	—
SMSS ID	98608298	$\log M_{L5100}/M_\odot$	—
Neighbour	5.2", 2160868100	$\log M_{H\alpha}/M_\odot$	—
SMSS $\langle r_{6''}^{\text{ap}} \rangle$	15.72 ± 0.04	$\log M_{H\beta}/M_\odot$	—
2MASS K_{ext}	11.33 ± 0.04	$\log M_{[\text{O III}]} / M_\odot$	—



Emission Line Measurements

Line	$\log L$ (erg s^{-1})	FWHM (km s^{-1})	σ (km s^{-1})	EW (\AA)
H γ Narrow	40.05 ± 0.16	345 ± 62	145 ± 25	3.90 ± 0.73
Hγ Broad	—	—	—	—
[O III] 4364	39.52 ± 0.37	342 ± 62	144 ± 25	1.24 ± 0.71
He II Narrow	—	—	—	—
He II Broad	39.57 ± 0.46	1189 ± 62	505 ± 25	1.50 ± 1.22
H β Narrow	40.78 ± 0.03	345 ± 62	145 ± 25	24.92 ± 0.74
Hβ Broad	—	—	—	—
[O III] 5007	40.51 ± 0.04	345 ± 62	145 ± 25	13.76 ± 0.69
He I Narrow	40.01 ± 0.08	342 ± 62	144 ± 25	5.41 ± 0.54
He I Broad	—	—	—	—
[O I] 6300	40.18 ± 0.05	342 ± 62	144 ± 25	8.77 ± 0.57
H α Narrow	41.66 ± 0.01	342 ± 62	144 ± 25	261.37 ± 0.98
Hα Broad	—	—	—	—
[N II] 6585	41.33 ± 0.01	342 ± 62	144 ± 25	124.05 ± 0.86
[S II] 6718	40.81 ± 0.01	342 ± 62	144 ± 25	39.79 ± 0.69
[S II] 6732	40.71 ± 0.02	342 ± 62	144 ± 25	32.23 ± 0.68

Emission Summary

H α broad SNR	0.00
H β broad SNR	0.00
H γ broad SNR	0.00
AGN frac	0.40
Host frac	0.60
$\log L_{5100, \text{Host}}$	43.23
Fe II/H β	—
Fe II/[O III]	0.74

Quality Flags

spurious_hab/hbb	1/0
15100	1
balmer	2
balmer_snr	2
hb_width	2
balmer_width	2