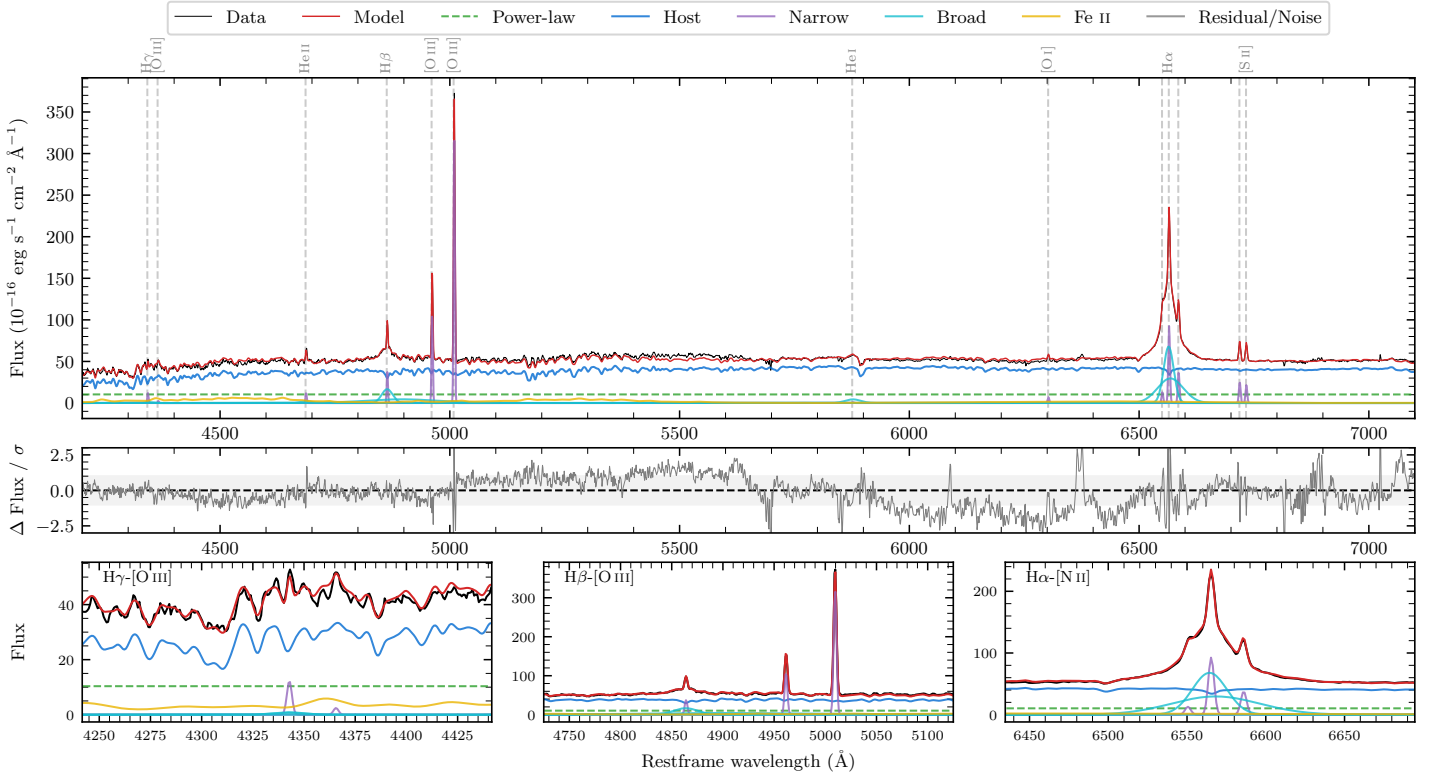
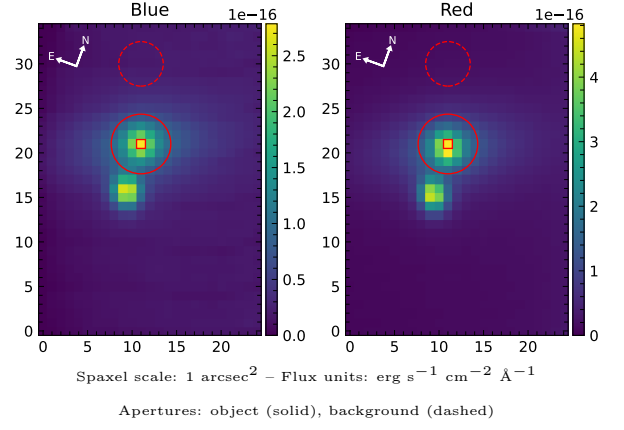


# MCG-06-30-015

Spectrum ID	98595967_sp3	Spectrum type	Sy 1.5
Alt name	g1335538-341744	Quality flag	good
$z$	0.0077	AGN reference	6dFGS
RA, Dec	203.9740, -34.2957	MW $E(B-V)$	0.052
MJD	60797.46	Power law $\alpha_\nu$	$-1.99 \pm 0.01$
SNR/ $\text{\AA}$ B/R	15.7/39.5	$\log L_{5100, \text{AGN}}$	$41.82 \pm 0.07$
Obs airmass	1.11	$\log H\beta_{\text{Br}}/[\text{O III}]$	$0.09 \pm 0.03$
SMSS ID	98595967	$\log M_{L5100}/M_\odot$	$6.58 \pm 0.06$
Neighbour	5.0", 98595966	$\log M_{H\alpha}/M_\odot$	$6.04 \pm 0.06$
SMSS $\langle r_{6''} \rangle_{\text{ap}}$	$14.19 \pm 0.06$	$\log M_{H\beta}/M_\odot$	$6.65 \pm 0.07$
2MASS $K_{\text{ext}}$	$9.58 \pm 0.02$	$\log M_{[\text{O III}]} / M_\odot$	$6.71 \pm 0.07$



## Emission Line Measurements

Line	$\log L$ ( $\text{erg s}^{-1}$ )	FWHM ( $\text{km s}^{-1}$ )	$\sigma$ ( $\text{km s}^{-1}$ )	EW ( $\text{\AA}$ )
H $\gamma$ Narrow	$38.68 \pm 0.16$	$202 \pm 62$	$85 \pm 25$	$3.67 \pm 0.82$
<b>H<math>\gamma</math> Broad</b>	—	—	—	—
[O III] 4364	$37.98 \pm 0.42$	$207 \pm 62$	$84 \pm 25$	$0.73 \pm 0.69$
He II Narrow	$38.70 \pm 0.11$	$207 \pm 62$	$84 \pm 25$	$3.84 \pm 0.54$
<b>He II Broad</b>	<b><math>38.95 \pm 0.20</math></b>	<b><math>1796 \pm 63</math></b>	<b><math>763 \pm 25</math></b>	<b><math>6.84 \pm 1.59</math></b>
H $\beta$ Narrow	$39.21 \pm 0.04$	$202 \pm 62$	$85 \pm 25$	$12.50 \pm 0.62$
<b>H<math>\beta</math> Broad</b>	<b><math>40.25 \pm 0.02</math></b>	<b><math>2024 \pm 56</math></b>	<b><math>2772 \pm 66</math></b>	<b><math>134.68 \pm 3.92</math></b>
[O III] 5007	$40.16 \pm 0.01$	$202 \pm 62$	$85 \pm 25$	$110.41 \pm 0.68$
He I Narrow	$37.68 \pm 0.41$	$207 \pm 62$	$84 \pm 25$	$0.36 \pm 0.25$
<b>He I Broad</b>	<b><math>39.37 \pm 0.04</math></b>	<b><math>2014 \pm 63</math></b>	<b><math>855 \pm 25</math></b>	<b><math>18.08 \pm 0.90</math></b>
[O I] 6300	$38.59 \pm 0.06$	$207 \pm 62$	$84 \pm 25$	$2.97 \pm 0.25$
H $\alpha$ Narrow	$39.74 \pm 0.01$	$207 \pm 62$	$84 \pm 25$	$41.82 \pm 0.38$
<b>H<math>\alpha</math> Broad</b>	<b><math>40.70 \pm 0.01</math></b>	<b><math>1458 \pm 63</math></b>	<b><math>735 \pm 25</math></b>	<b><math>385.36 \pm 1.09</math></b>
[N II] 6585	$39.35 \pm 0.01$	$207 \pm 62$	$84 \pm 25$	$17.08 \pm 0.31$
[S II] 6718	$39.18 \pm 0.02$	$207 \pm 62$	$84 \pm 25$	$11.69 \pm 0.26$
[S II] 6732	$39.11 \pm 0.02$	$207 \pm 62$	$84 \pm 25$	$9.98 \pm 0.25$

## Emission Summary

H $\alpha$ broad SNR	30.33
H $\beta$ broad SNR	6.51
H $\gamma$ broad SNR	0.66
AGN frac	0.22
Host frac	0.78
$\log L_{5100, \text{Host}}$	42.37
Fe II/H $\beta$	1.16
Fe II/[O III]	1.41

## Quality Flags

spurious_hab/hbb	0/0
15100	1
balmer	0
balmer_snr	2
hb_width	2
balmer_width	0