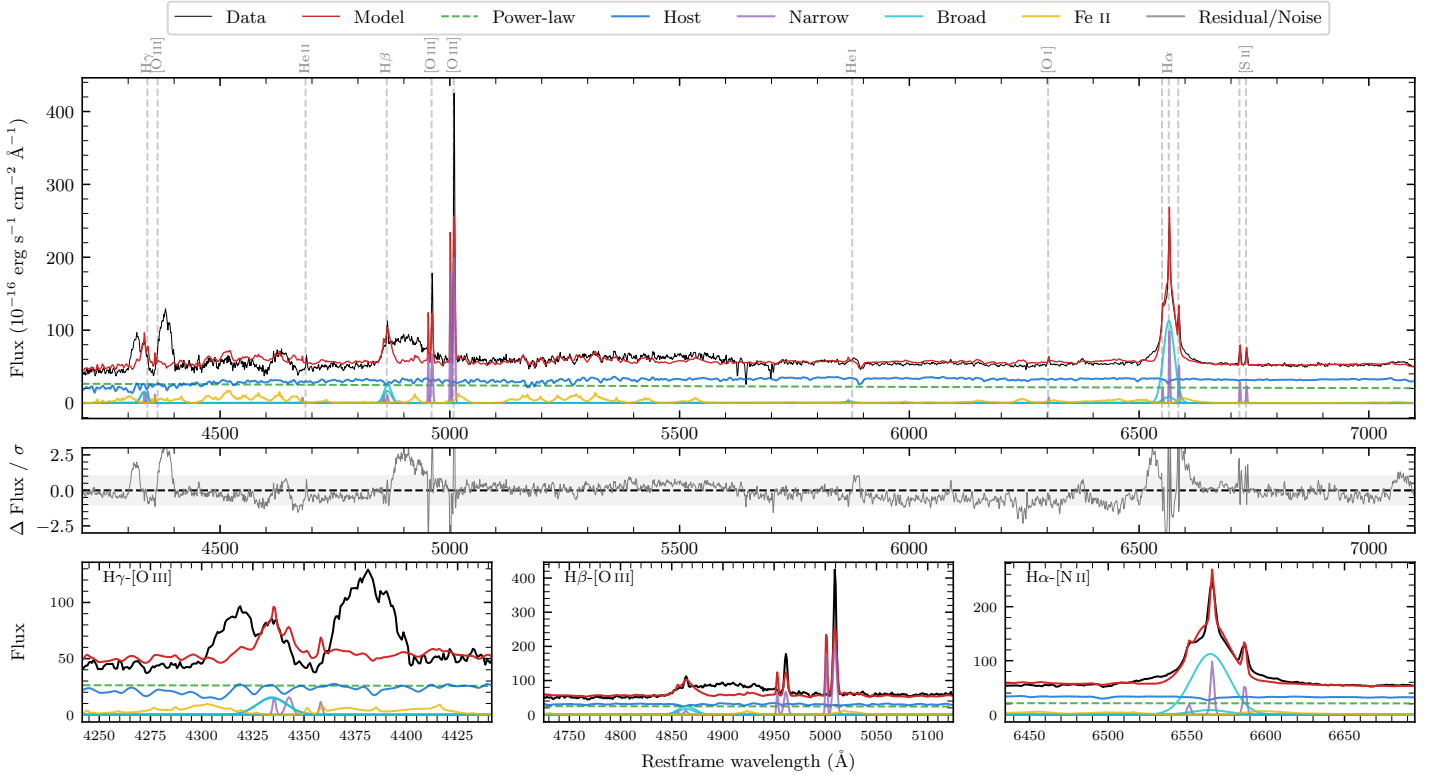
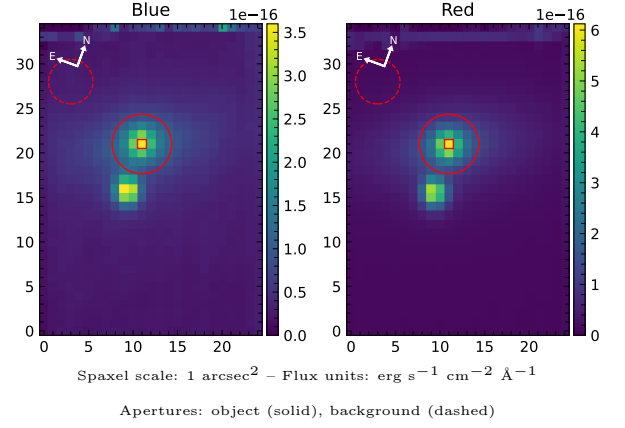


# MCG-06-30-015

Spectrum ID	98595967_sp2	Spectrum type	Bad
Alt name	g1335538-341744	Quality flag	bad_blue
$z$	0.0077	AGN reference	6dFGS
RA, Dec	203.9740, -34.2957	MW $E(B-V)$	0.052
MJD	60769.51	Power law $\alpha_\nu$	$-1.50 \pm 0.37$
SNR/ $\text{\AA}$ B/R	4.4/11.2	$\log L_{5100, \text{AGN}}$	$42.19 \pm 0.07$
Obs airmass	1.19	$\log H\beta_{\text{Br}}/[\text{O III}]$	$-0.18 \pm 0.05$
SMSS ID	98595967	$\log M_{L5100}/M_\odot$	$6.27 \pm 0.05$
Neighbour	5.0", 98595966	$\log M_{H\alpha}/M_\odot$	$5.91 \pm 0.07$
SMSS $\langle r_6''_{\text{ap}} \rangle$	$14.19 \pm 0.06$	$\log M_{H\beta}/M_\odot$	$6.10 \pm 0.07$
2MASS $K_{\text{ext}}$	$9.58 \pm 0.02$	$\log M_{[\text{O III}]} / M_\odot$	$6.28 \pm 0.06$



## Emission Line Measurements

Line	$\log L$ ( $\text{erg s}^{-1}$ )	FWHM ( $\text{km s}^{-1}$ )	$\sigma$ ( $\text{km s}^{-1}$ )	EW ( $\text{\AA}$ )
H $\gamma$ Narrow	$39.07 \pm 0.33$	—	$250 \pm 25$	$3.57 \pm 1.41$
<b>H<math>\gamma</math> Broad</b>	<b><math>39.87 \pm 0.10</math></b>	<b><math>1180 \pm 62</math></b>	<b><math>355 \pm 25</math></b>	<b><math>21.41 \pm 2.66</math></b>
[O III] 4364	—	—	—	—
He II Narrow	—	—	—	—
<b>He II Broad</b>	—	—	—	—
H $\beta$ Narrow	$38.95 \pm 0.32$	—	$250 \pm 25$	$2.91 \pm 1.02$
<b>H<math>\beta</math> Broad</b>	<b><math>40.05 \pm 0.05</math></b>	<b><math>1179 \pm 25</math></b>	<b><math>443 \pm 25</math></b>	<b><math>35.37 \pm 2.04</math></b>
[O III] 5007	$40.23 \pm 0.02$	—	$250 \pm 25$	$56.19 \pm 1.30$
He I Narrow	$38.17 \pm 0.41$	$129 \pm 62$	$50 \pm 25$	$0.52 \pm 0.34$
<b>He I Broad</b>	<b><math>38.87 \pm 0.33</math></b>	<b><math>1180 \pm 62</math></b>	<b><math>501 \pm 25</math></b>	<b><math>2.62 \pm 1.17</math></b>
[O I] 6300	$38.41 \pm 0.25$	$129 \pm 62$	$50 \pm 25$	$0.93 \pm 0.33$
H $\alpha$ Narrow	$39.54 \pm 0.03$	$129 \pm 62$	$50 \pm 25$	$13.04 \pm 0.40$
<b>H<math>\alpha</math> Broad</b>	<b><math>40.66 \pm 0.01</math></b>	<b><math>1283 \pm 63</math></b>	<b><math>484 \pm 25</math></b>	<b><math>172.90 \pm 1.29</math></b>
[N II] 6585	$39.31 \pm 0.03$	$129 \pm 62$	$50 \pm 25$	$7.66 \pm 0.40$
[S II] 6718	$39.06 \pm 0.07$	$129 \pm 62$	$50 \pm 25$	$4.28 \pm 0.37$
[S II] 6732	$38.93 \pm 0.08$	$129 \pm 62$	$50 \pm 25$	$3.20 \pm 0.34$

## Emission Summary

H $\alpha$ broad SNR	9.57
H $\beta$ broad SNR	3.40
H $\gamma$ broad SNR	2.54
AGN frac	0.45
Host frac	0.55
$\log L_{5100, \text{Host}}$	42.27
Fe II/H $\beta$	2.38
Fe II/[O III]	1.52

## Quality Flags

spurious_hab/hbb	0/0
15100	1
balmer	0
balmer_snr	1
hb_width	0
balmer_width	1