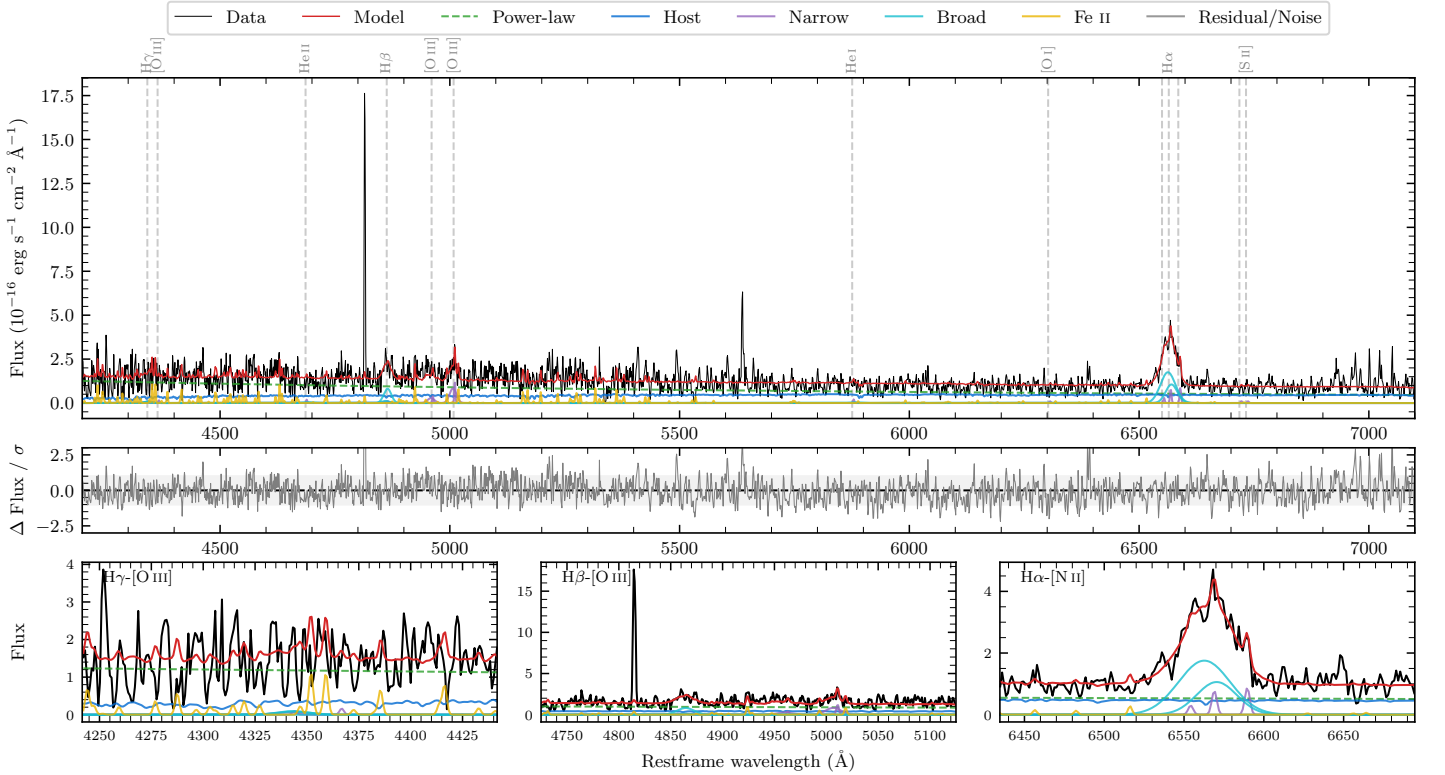
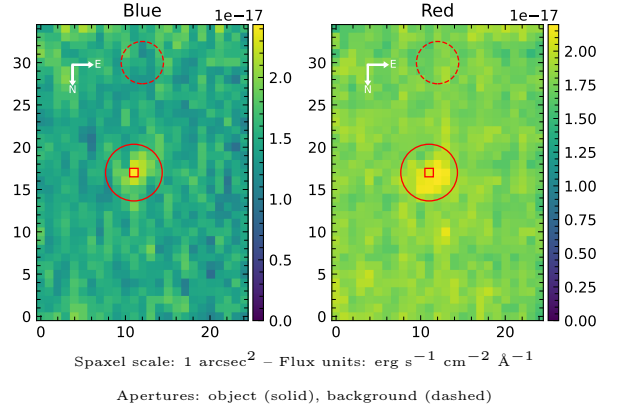


Spectrum ID	98508726_sp1	Spectrum type	Bad
Alt name	g1321582-310426	Quality flag	bad_blue
z	0.0454	AGN reference	6dFGS
RA, Dec	200.4925, -31.0737	MW $E(B - V)$	0.060
MJD	60079.48	Power law α_ν	-0.06 ± 0.11
SNR/ \AA B/R	1.8/2.1	$\log L_{5100, \text{AGN}}$	42.33 ± 0.06
Obs airmass	1.01	$\log H\beta_{\text{Br}}/[\text{O III}]$	0.04 ± 0.16
SMSS ID	98508726	$\log M_{L5100}/M_\odot$	6.35 ± 0.05
Neighbour	5.4", 2160698816	$\log M_{\text{H}\alpha}/M_\odot$	6.16 ± 0.07
SMSS $\langle r_{6'' \text{ap}} \rangle$	15.97 ± 0.09	$\log M_{\text{H}\beta}/M_\odot$	6.11 ± 0.09
2MASS K_{ext}	12.48 ± 0.06	$\log M_{[\text{O III}]} / M_\odot$	6.18 ± 0.09



Emission Line Measurements

Line	$\log L$ (erg s $^{-1}$)	FWHM (km s $^{-1}$)	σ (km s $^{-1}$)	EW (Angstrom)
H γ Narrow	—	—	—	—
Hγ Broad	—	—	—	—
[O III] 4364	—	—	—	—
He II Narrow	—	—	—	—
He II Broad	—	—	—	—
H β Narrow	—	—	—	—
Hβ Broad	40.02 ± 0.12	1210 ± 35	420 ± 25	21.43 ± 3.33
[O III] 5007	39.98 ± 0.11	296 ± 151	407 ± 27	22.22 ± 3.23
He I Narrow	—	—	—	—
He I Broad	—	—	—	—
[O I] 6300	—	—	—	—
H α Narrow	39.19 ± 0.27	176 ± 62	72 ± 25	6.11 ± 2.23
Hα Broad	40.72 ± 0.02	1640 ± 77	624 ± 25	206.54 ± 5.97
[N II] 6585	39.25 ± 0.16	176 ± 62	72 ± 25	6.93 ± 1.95
[S II] 6718	—	—	—	—
[S II] 6732	—	—	—	—

Emission Summary

H α broad SNR	3.64
H β broad SNR	1.34
H γ broad SNR	0.00
AGN frac	0.70
Host frac	0.30
$\log L_{5100, \text{Host}}$	41.95
Fe II/H β	1.85
Fe II/[O III]	1.89

Quality Flags

spurious_hab/hbb	0/0
15100	0
balmer	1
balmer_snr	2
hb_width	0
balmer_width	2