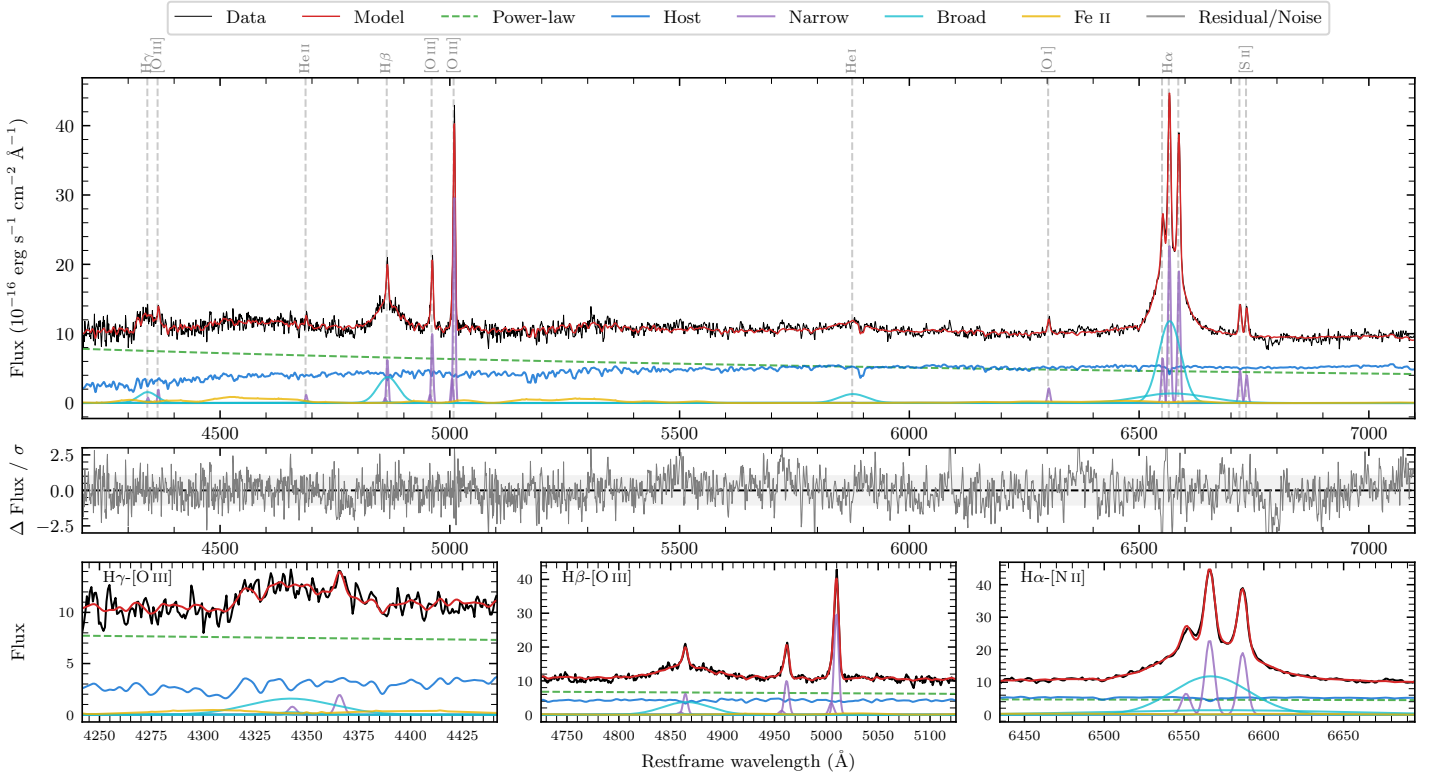
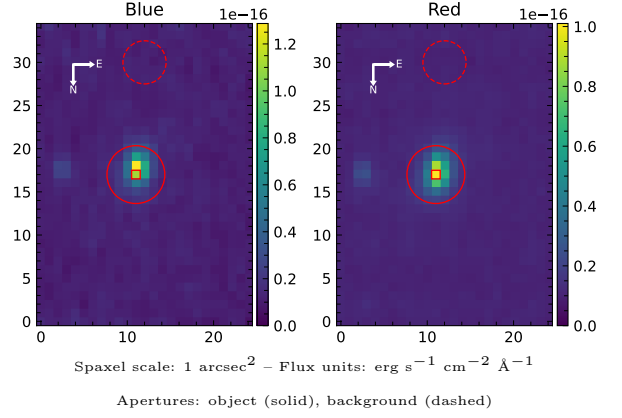


2MASS J12021698–3425153

Spectrum ID	97030380_sp1	Spectrum type	Sy 1.5
Alt name	g1202170–342515	Quality flag	good
z	0.0591	AGN reference	6dFGS
RA, Dec	180.5708, –34.4209	MW $E(B - V)$	0.073
MJD	60076.45	Power law α_ν	-0.81 ± 0.11
SNR/ \AA B/R	16.4/25.2	$\log L_{5100, \text{AGN}}$	43.42 ± 0.02
Obs airmass	1.00	$\log H\beta_{\text{Br}}/[\text{O III}]$	0.07 ± 0.02
SMSS ID	97030380	$\log M_{L5100}/M_\odot$	7.66 ± 0.03
Neighbour	8.6", 97030379	$\log M_{\text{H}\alpha}/M_\odot$	7.34 ± 0.02
SMSS $\langle r_6''_{\text{ap}} \rangle$	16.33 ± 0.03	$\log M_{\text{H}\beta}/M_\odot$	7.51 ± 0.04
2MASS K_{ext}	12.96 ± 0.10	$\log M_{[\text{O III}]} / M_\odot$	7.62 ± 0.03



Emission Line Measurements

Line	$\log L$ (erg s^{-1})	FWHM (km s^{-1})	σ (km s^{-1})	EW (\AA)
H γ Narrow	39.57 ± 0.31	332 ± 63	160 ± 25	0.59 ± 0.25
Hγ Broad	40.88 ± 0.05	2959 ± 316	1198 ± 47	12.08 ± 0.77
[O III] 4364	39.92 ± 0.12	313 ± 63	132 ± 25	1.34 ± 0.25
He II Narrow	39.73 ± 0.20	313 ± 63	132 ± 25	0.94 ± 0.22
He II Broad	39.69 ± 0.37	1180 ± 62	500 ± 25	0.87 ± 0.47
H β Narrow	40.51 ± 0.04	332 ± 63	160 ± 25	6.01 ± 0.26
Hβ Broad	41.28 ± 0.02	3180 ± 88	1199 ± 27	34.70 ± 0.76
[O III] 5007	41.21 ± 0.01	332 ± 63	160 ± 25	30.97 ± 0.28
He I Narrow	–	–	–	–
He I Broad	40.95 ± 0.03	3715 ± 67	1578 ± 27	20.31 ± 0.76
[O I] 6300	40.12 ± 0.04	313 ± 63	132 ± 25	3.28 ± 0.21
H α Narrow	41.17 ± 0.01	313 ± 63	132 ± 25	38.62 ± 0.34
Hα Broad	41.93 ± 0.01	2765 ± 65	1276 ± 31	223.96 ± 1.34
[N II] 6585	41.08 ± 0.01	313 ± 63	132 ± 25	32.11 ± 0.34
[S II] 6718	40.48 ± 0.02	313 ± 63	132 ± 25	8.21 ± 0.24
[S II] 6732	40.42 ± 0.02	313 ± 63	132 ± 25	7.14 ± 0.24

Emission Summary

H α broad SNR	19.43
H β broad SNR	5.80
H γ broad SNR	2.79
AGN frac	0.60
Host frac	0.40
$\log L_{5100, \text{Host}}$	43.24
Fe II/H β	0.78
Fe II/[O III]	0.90

Quality Flags

spurious_hab/hbb	0/0
15100	0
balmer	0
balmer_snr	1
hb_width	0
balmer_width	0