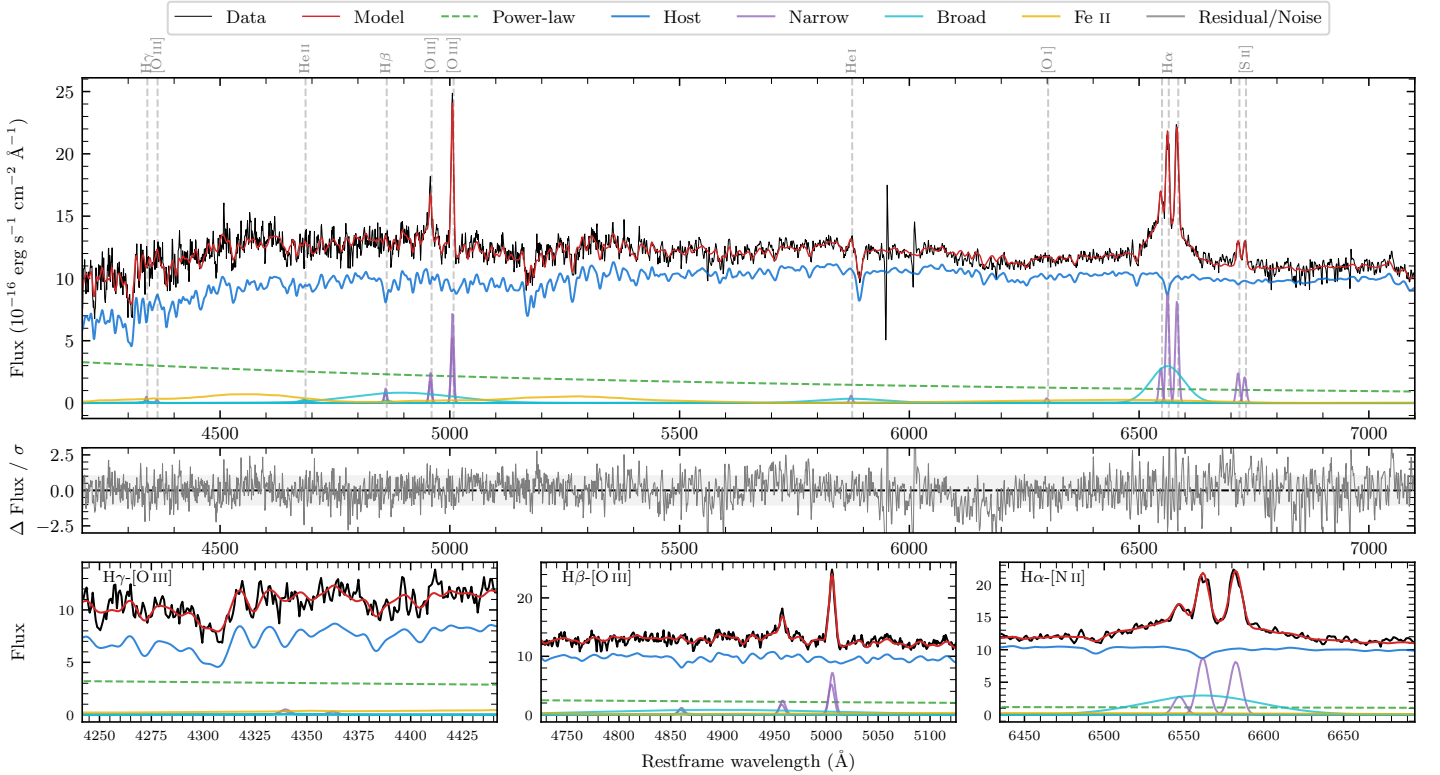
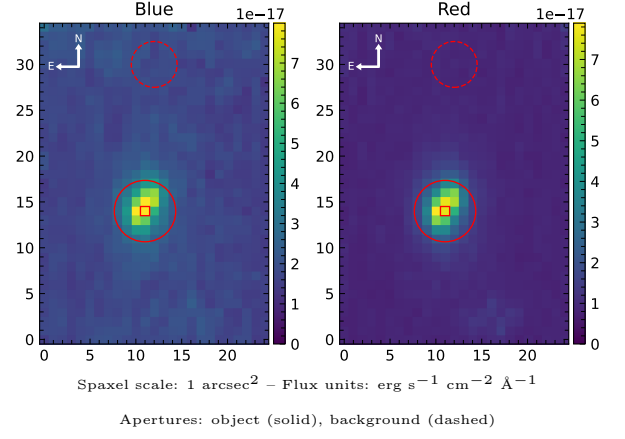


# LEDA 3081954

Spectrum ID	96892512_sp1	Spectrum type	Sy 1.2
Alt name	g1203575-343528	Quality flag	good
$z$	0.0587	AGN reference	6dFGS
RA, Dec	180.9897, -34.5912	MW $E(B - V)$	0.074
MJD	60329.73	Power law $\alpha_\nu$	$0.42 \pm 0.09$
SNR/ $\text{\AA}$ B/R	16.7/32.2	$\log L_{5100, \text{AGN}}$	$42.94 \pm 0.06$
Obs airmass	1.01	$\log H\beta_{\text{Br}}/[\text{O III}]$	$0.44 \pm 0.05$
SMSS ID	96892512	$\log M_{L5100}/M_\odot$	$8.72 \pm 0.14$
Neighbour	2.5", 2158344019	$\log M_{H\alpha}/M_\odot$	$7.28 \pm 0.04$
SMSS $\langle r_{6''}^{\text{ap}} \rangle$	$16.22 \pm 0.03$	$\log M_{H\beta}/M_\odot$	$8.80 \pm 0.14$
2MASS $K_{\text{ext}}$	$12.27 \pm 0.09$	$\log M_{[\text{O III}]} / M_\odot$	$8.73 \pm 0.14$



## Emission Line Measurements

Line	$\log L$ ( $\text{erg s}^{-1}$ )	FWHM ( $\text{km s}^{-1}$ )	$\sigma$ ( $\text{km s}^{-1}$ )	EW ( $\text{\AA}$ )
H $\gamma$ Narrow	$39.66 \pm 0.31$	$402 \pm 62$	$171 \pm 25$	$1.84 \pm 0.79$
<b>H<math>\gamma</math> Broad</b>	—	—	—	—
[O III] 4364	—	—	—	—
He II Narrow	$39.23 \pm 0.49$	$397 \pm 62$	$168 \pm 25$	$0.80 \pm 0.75$
<b>He II Broad</b>	<b><math>39.81 \pm 0.38</math></b>	<b><math>1717 \pm 62</math></b>	<b><math>729 \pm 25</math></b>	<b><math>3.02 \pm 1.70</math></b>
H $\beta$ Narrow	$40.09 \pm 0.12$	$402 \pm 62$	$171 \pm 25$	$6.32 \pm 0.82$
<b>H<math>\beta</math> Broad</b>	<b><math>41.33 \pm 0.05</math></b>	<b><math>13687 \pm 2212</math></b>	<b><math>5852 \pm 51</math></b>	<b><math>111.44 \pm 6.02</math></b>
[O III] 5007	$40.89 \pm 0.02$	$402 \pm 62$	$171 \pm 25$	$42.94 \pm 0.91$
He I Narrow	$39.64 \pm 0.16$	$397 \pm 62$	$168 \pm 25$	$3.55 \pm 0.72$
<b>He I Broad</b>	<b><math>40.76 \pm 0.08</math></b>	<b><math>9065 \pm 63</math></b>	<b><math>3850 \pm 25</math></b>	<b><math>47.12 \pm 5.22</math></b>
[O I] 6300	$39.48 \pm 0.21$	$397 \pm 62$	$168 \pm 25$	$2.94 \pm 0.80$
H $\alpha$ Narrow	$40.85 \pm 0.01$	$397 \pm 62$	$168 \pm 25$	$76.18 \pm 1.15$
<b>H<math>\alpha</math> Broad</b>	<b><math>41.39 \pm 0.02</math></b>	<b><math>3778 \pm 102</math></b>	<b><math>1421 \pm 25</math></b>	<b><math>257.53 \pm 3.36</math></b>
[N II] 6585	$40.82 \pm 0.01$	$397 \pm 62$	$168 \pm 25$	$71.81 \pm 1.12$
[S II] 6718	$40.30 \pm 0.03$	$397 \pm 62$	$168 \pm 25$	$22.61 \pm 1.09$
[S II] 6732	$40.24 \pm 0.04$	$397 \pm 62$	$168 \pm 25$	$19.61 \pm 1.03$

## Emission Summary

H $\alpha$ broad SNR	4.26
H $\beta$ broad SNR	1.42
H $\gamma$ broad SNR	0.36
AGN frac	0.18
Host frac	0.82
$\log L_{5100, \text{Host}}$	43.60
Fe II/H $\beta$	0.76
Fe II/[O III]	2.08

## Quality Flags

spurious_hab/hbb	0/0
15100	2
balmer	1
balmer_snr	2
hb_width	0
balmer_width	1