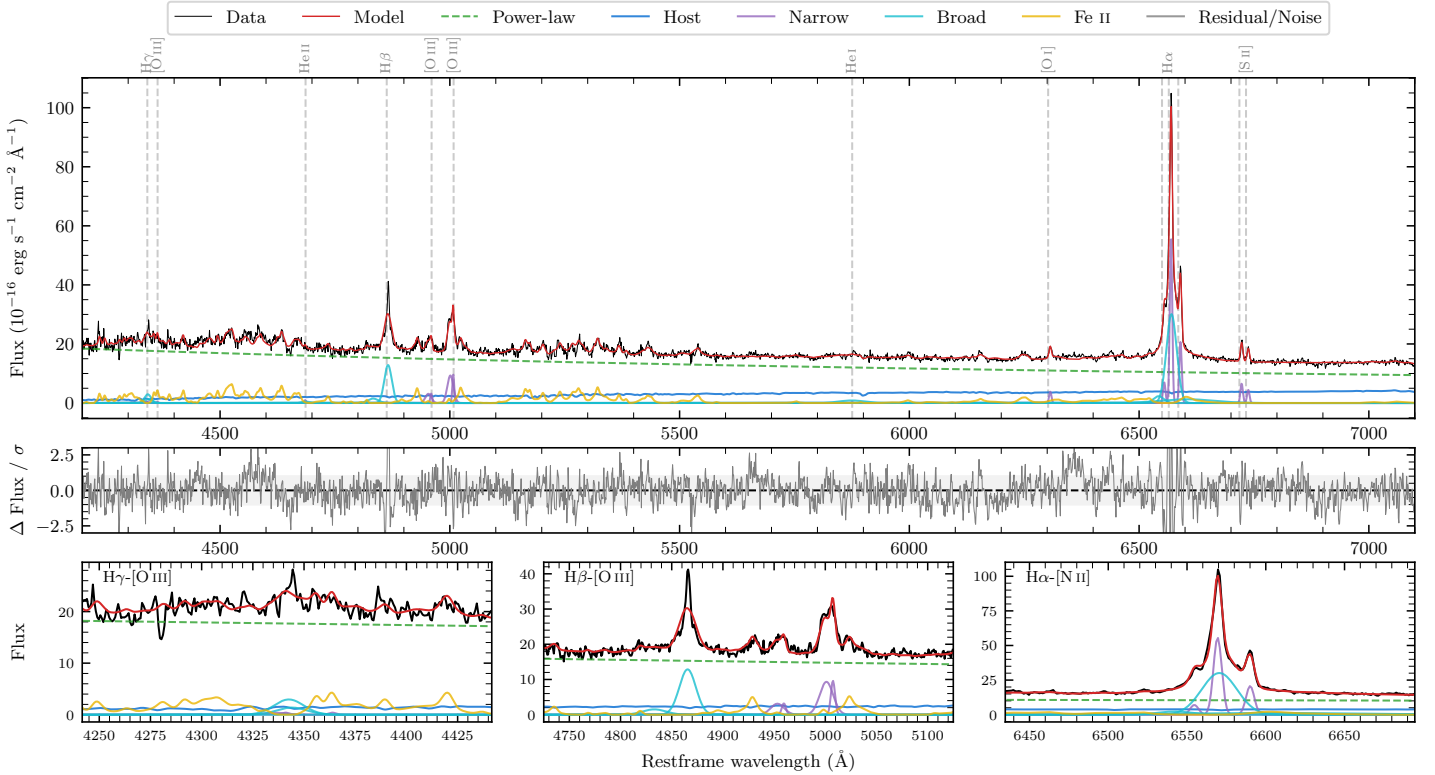
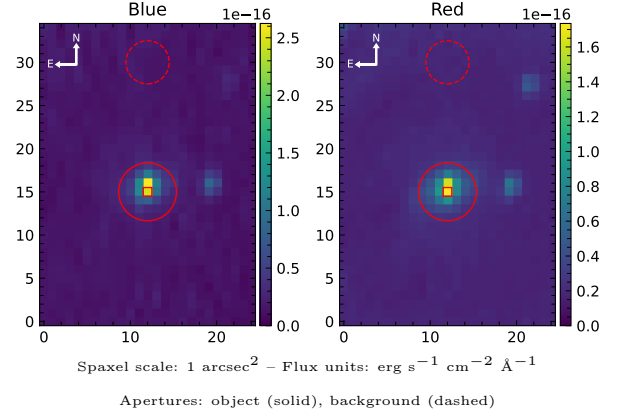


LEDA 88835

Spectrum ID	96500476_sp2	Spectrum type	Sy 1.5
Alt name	g1325194-382453	Quality flag	bad_fit
z	0.0657	AGN reference	6dFGS
RA, Dec	201.3307, -38.4146	MW $E(B-V)$	0.060
MJD	61124.64	Power law α_ν	-0.73 ± 0.07
SNR/ \AA B/R	16.2/22.6	$\log L_{5100, \text{AGN}}$	43.89 ± 0.01
Obs airmass	1.01	$\log H\beta_{\text{Br}}/[\text{O III}]$	0.19 ± 0.03
SMSS ID	96500476	$\log M_{L5100}/M_\odot$	7.01 ± 0.02
Neighbour	6.8", 96500478	$\log M_{\text{H}\alpha}/M_\odot$	6.76 ± 0.04
SMSS $\langle r_6 \rangle_{\text{ap}}$	15.88 ± 0.08	$\log M_{\text{H}\beta}/M_\odot$	6.78 ± 0.03
2MASS K_{ext}	11.89 ± 0.07	$\log M_{[\text{O III}]} / M_\odot$	6.84 ± 0.02



Emission Line Measurements

Line	$\log L$ (erg s^{-1})	FWHM (km s^{-1})	σ (km s^{-1})	EW (\AA)
H γ Narrow	39.91 ± 0.49	781 ± 63	383 ± 25	0.44 ± 0.29
Hγ Broad	40.97 ± 0.06	1183 ± 63	437 ± 25	4.77 ± 0.34
[O III] 4364	—	—	—	—
He II Narrow	39.72 ± 0.34	284 ± 62	120 ± 25	0.31 ± 0.16
He II Broad	40.07 ± 0.36	1229 ± 62	521 ± 25	0.70 ± 0.32
H β Narrow	—	—	—	—
Hβ Broad	41.54 ± 0.02	1192 ± 25	568 ± 43	21.48 ± 0.48
[O III] 5007	41.35 ± 0.02	781 ± 63	384 ± 25	14.58 ± 0.32
He I Narrow	—	—	—	—
He I Broad	40.83 ± 0.07	3298 ± 62	1400 ± 25	5.33 ± 0.49
[O I] 6300	40.44 ± 0.05	284 ± 62	120 ± 25	2.37 ± 0.16
H α Narrow	41.61 ± 0.01	284 ± 62	120 ± 25	37.57 ± 0.23
Hα Broad	42.09 ± 0.01	1259 ± 63	670 ± 26	111.68 ± 0.84
[N II] 6585	41.19 ± 0.01	284 ± 62	120 ± 25	14.06 ± 0.20
[S II] 6718	40.70 ± 0.03	284 ± 62	120 ± 25	4.68 ± 0.18
[S II] 6732	40.53 ± 0.05	284 ± 62	120 ± 25	3.18 ± 0.20

Emission Summary

H α broad SNR	26.69
H β broad SNR	11.01
H γ broad SNR	3.87
AGN frac	0.85
Host frac	0.15
$\log L_{5100, \text{Host}}$	43.14
Fe II/H β	2.70
Fe II/[O III]	4.12

Quality Flags

spurious_hab/hbb	0/0
15100	0
balmer	0
balmer_snr	0
hb_width	0
balmer_width	1