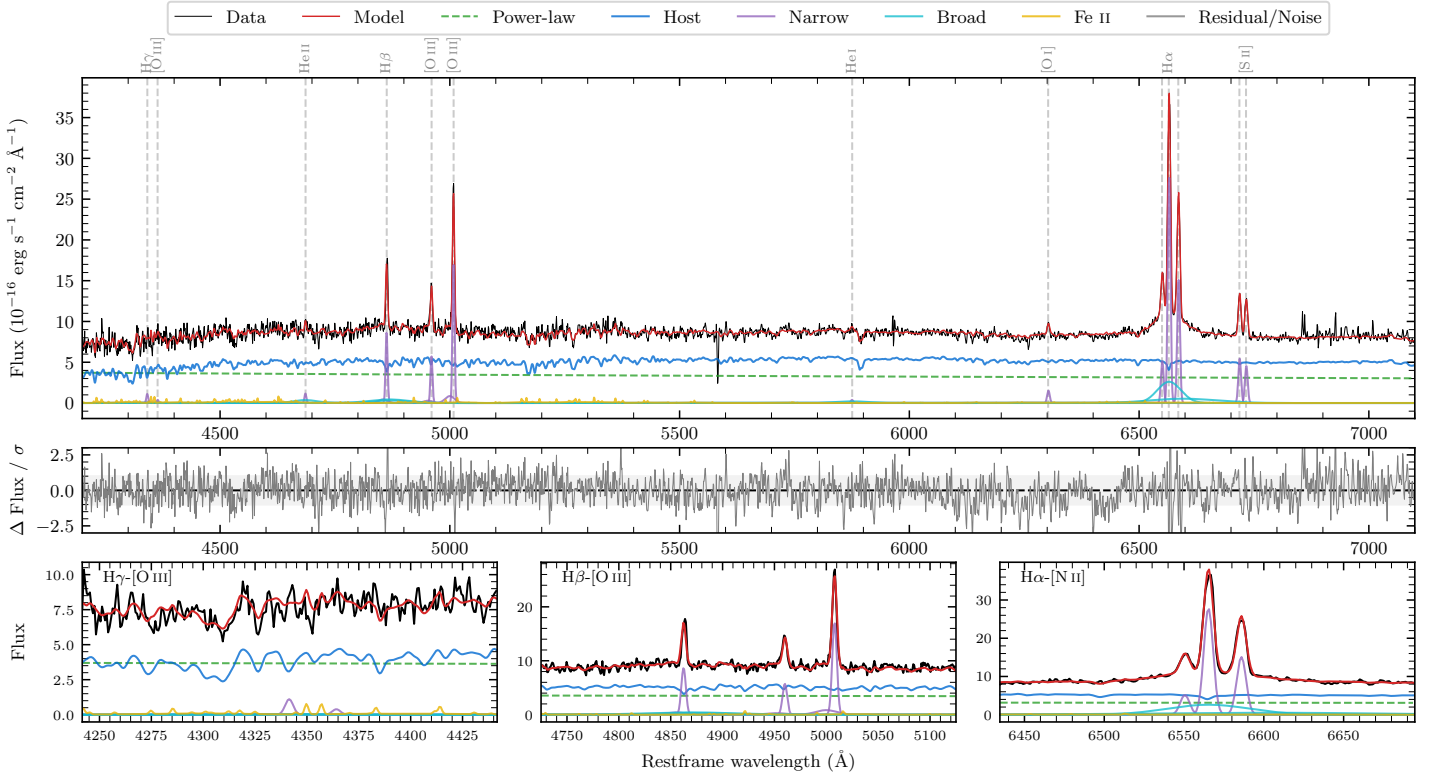
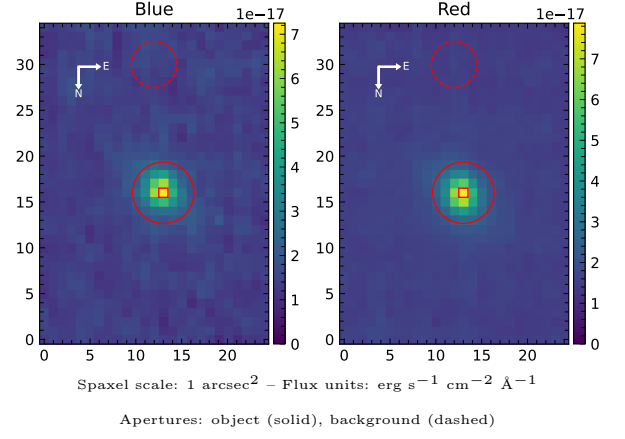


LEDA 593407

Spectrum ID	95998184_sp1	Spectrum type	Sy 1.5
Alt name	g1343431-395032	Quality flag	good
z	0.0565	AGN reference	6dFGS
RA, Dec	205.9296, -39.8422	MW $E(B-V)$	0.060
MJD	60081.46	Power law α_ν	-1.61 ± 0.06
SNR/ \AA B/R	13.8/23.1	$\log L_{5100, \text{AGN}}$	43.13 ± 0.02
Obs airmass	1.04	$\log H\beta_{\text{Br}}/[\text{O III}]$	-0.19 ± 0.07
SMSS ID	95998184	$\log M_{L5100}/M_\odot$	8.04 ± 0.06
Neighbour	None $< 15''$	$\log M_{H\alpha}/M_\odot$	7.07 ± 0.04
SMSS $\langle r_6'' \text{ap} \rangle$	16.32 ± 0.07	$\log M_{H\beta}/M_\odot$	7.80 ± 0.08
2MASS K_{ext}	12.60 ± 0.09	$\log M_{[\text{O III}]} / M_\odot$	8.01 ± 0.06



Emission Line Measurements

Line	$\log L$ (erg s^{-1})	FWHM (km s^{-1})	σ (km s^{-1})	EW (\AA)
H γ Narrow	39.73 ± 0.19	327 ± 63	338 ± 35	1.90 ± 0.90
Hγ Broad	—	—	—	—
[O III] 4364	39.19 ± 0.38	316 ± 63	134 ± 25	0.55 ± 0.41
He II Narrow	39.69 ± 0.17	316 ± 63	134 ± 25	1.82 ± 0.40
He II Broad	40.27 ± 0.17	3835 ± 69	1629 ± 28	6.86 ± 1.37
H β Narrow	40.67 ± 0.02	327 ± 63	338 ± 35	17.38 ± 0.84
Hβ Broad	40.79 ± 0.06	5690 ± 377	2146 ± 127	22.50 ± 1.74
[O III] 5007	40.98 ± 0.02	327 ± 63	338 ± 35	35.68 ± 0.84
He I Narrow	39.32 ± 0.25	316 ± 63	134 ± 25	0.84 ± 0.28
He I Broad	40.19 ± 0.14	4439 ± 72	1885 ± 29	6.20 ± 1.18
[O I] 6300	39.94 ± 0.05	316 ± 63	134 ± 25	3.59 ± 0.28
H α Narrow	41.22 ± 0.01	316 ± 63	134 ± 25	69.17 ± 0.41
Hα Broad	41.33 ± 0.02	3083 ± 97	1514 ± 63	89.18 ± 1.67
[N II] 6585	40.95 ± 0.01	316 ± 63	134 ± 25	37.68 ± 0.39
[S II] 6718	40.52 ± 0.02	316 ± 63	134 ± 25	13.95 ± 0.32
[S II] 6732	40.45 ± 0.02	316 ± 63	134 ± 25	11.81 ± 0.32

Emission Summary

H α broad SNR	4.99
H β broad SNR	1.24
H γ broad SNR	0.00
AGN frac	0.42
Host frac	0.58
$\log L_{5100, \text{Host}}$	43.26
Fe II/H β	0.67
Fe II/[O III]	0.43

Quality Flags

spurious_hab/hbb	0/0
15100	1
balmer	1
balmer_snr	2
hb_width	0
balmer_width	1