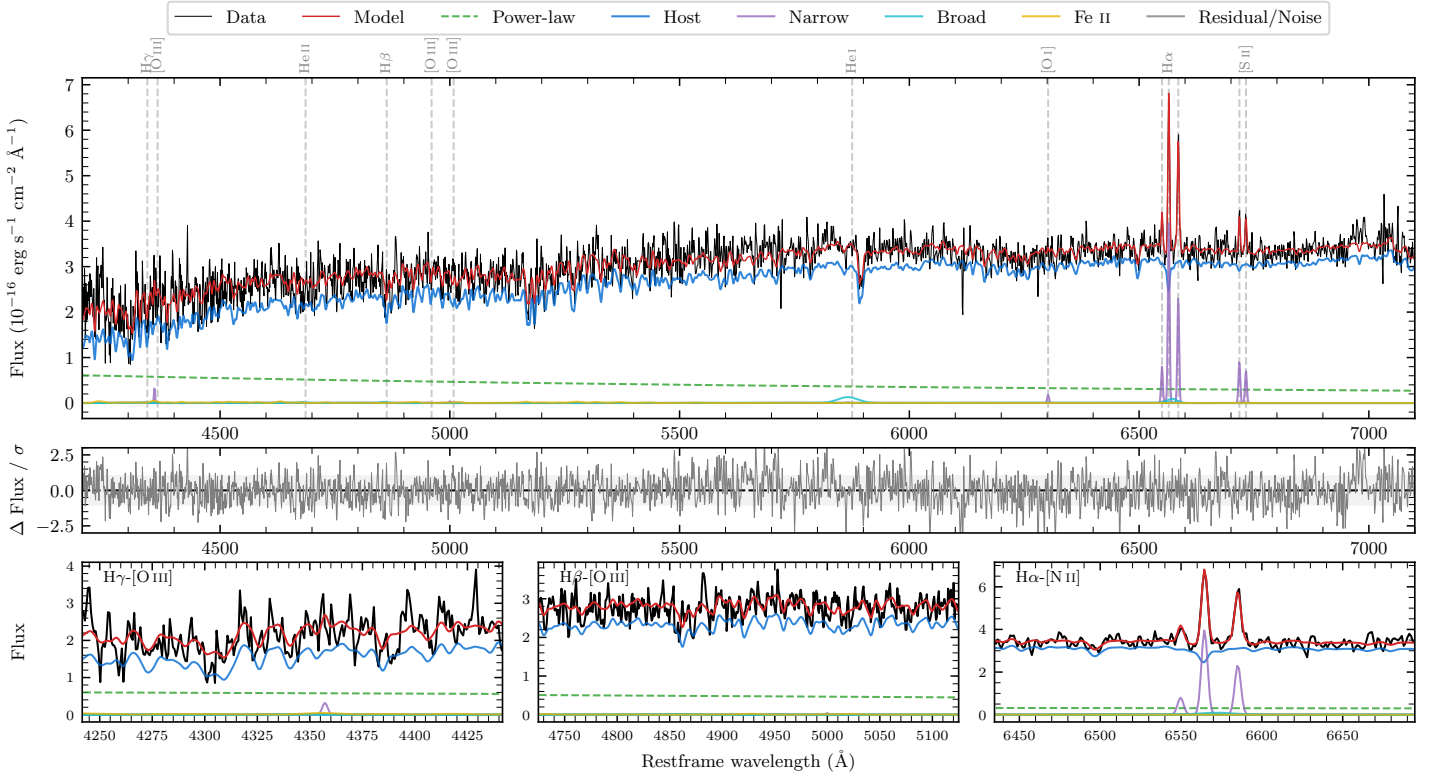
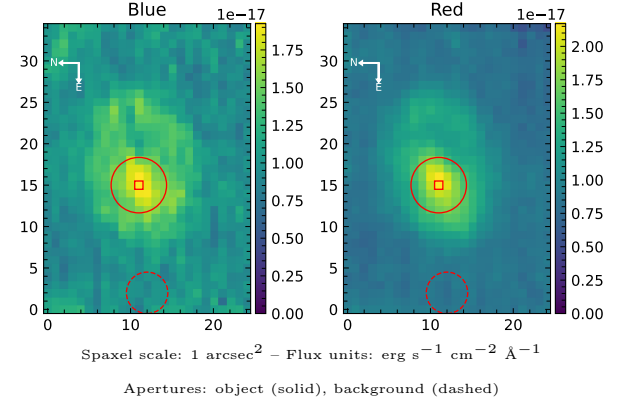


MCG-06-02-022a

Spectrum ID	9576026_sp1	Spectrum type	SF
Alt name	Cartwheel	Quality flag	good
z	0.0305	AGN reference	6dFGS
RA, Dec	9.4210, -33.7164	MW $E(B-V)$	0.009
MJD	60171.69	Power law α_ν	-0.46 ± 0.02
SNR/ \AA B/R	8.3/17.9	$\log L_{5100, \text{AGN}}$	41.69 ± 0.05
Obs airmass	1.01	$\log H\beta_{\text{Br}}/[\text{O III}]$	—
SMSS ID	9576026	$\log M_{L5100}/M_\odot$	—
Neighbour	1.6", 2016029195	$\log M_{\text{H}\alpha}/M_\odot$	—
SMSS $\langle r_{6'' \text{ap}} \rangle$	17.21 ± 0.12	$\log M_{\text{H}\beta}/M_\odot$	—
2MASS K_{ext}	12.60 ± 0.13	$\log M_{[\text{O III}]} / M_\odot$	—



Emission Line Measurements

Line	$\log L$ (erg s ⁻¹)	FWHM (km s ⁻¹)	σ (km s ⁻¹)	EW (Å)
H γ Narrow	—	—	—	—
Hγ Broad	—	—	—	—
[O III] 4364	38.34 ± 0.17	208 ± 62	86 ± 25	1.80 ± 1.15
He II Narrow	—	—	—	—
He II Broad	—	—	—	—
H β Narrow	—	—	—	—
Hβ Broad	—	—	—	—
[O III] 5007	—	—	—	—
He I Narrow	—	—	—	—
He I Broad	39.20 ± 0.13	2641 ± 62	1121 ± 25	20.28 ± 4.13
[O I] 6300	38.27 ± 0.19	208 ± 62	86 ± 25	2.67 ± 1.18
H α Narrow	39.62 ± 0.01	208 ± 62	86 ± 25	63.24 ± 1.26
Hα Broad	—	—	—	—
[N II] 6585	39.39 ± 0.01	208 ± 62	86 ± 25	37.59 ± 1.28
[S II] 6718	38.98 ± 0.04	208 ± 62	86 ± 25	15.34 ± 1.66
[S II] 6732	38.88 ± 0.06	208 ± 62	86 ± 25	12.06 ± 1.43

Emission Summary

H α broad SNR	0.36
H β broad SNR	0.00
H γ broad SNR	0.00
AGN frac	0.17
Host frac	0.83
$\log L_{5100, \text{Host}}$	42.38
Fe II/H β	—
Fe II/[O III]	—

Quality Flags

spurious_hab/hbb	0/0
15100	2
balmer	2
balmer_snr	2
hb_width	2
balmer_width	2