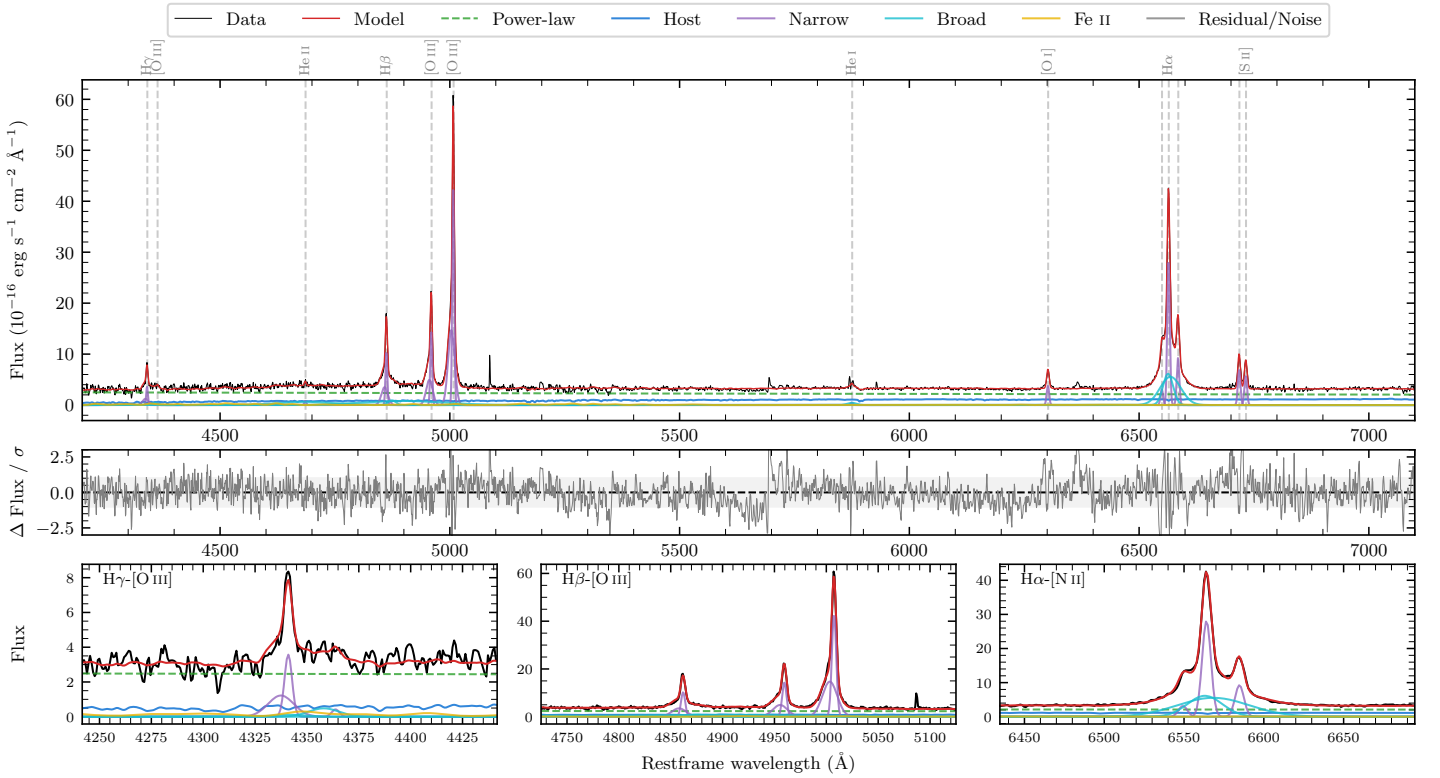
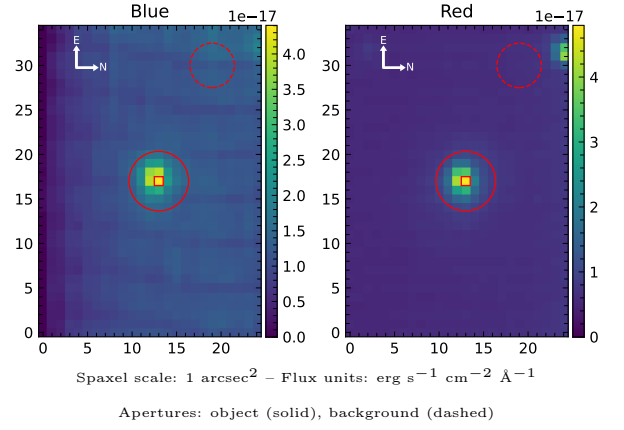


LEDA 628465

Spectrum ID	95390047_sp1	Spectrum type	Sy 1.8
Alt name	g1243078-370552	Quality flag	good
z	0.0732	AGN reference	6dFGS
RA, Dec	190.7827, -37.0976	MW $E(B - V)$	0.060
MJD	60351.72	Power law α_ν	-1.62 ± 0.26
SNR/ \AA B/R	8.1/12.9	$\log L_{5100, \text{AGN}}$	43.19 ± 0.02
Obs airmass	1.01	$\log H\beta_{\text{Br}} / [\text{O III}]$	-1.41 ± 0.55
SMSS ID	95390047	$\log M_{L5100} / M_\odot$	6.70 ± 0.03
Neighbour	None $< 15''$	$\log M_{H\alpha} / M_\odot$	6.82 ± 0.04
SMSS $\langle r_6 \rangle_{\text{ap}}$	17.21 ± 0.07	$\log M_{H\beta} / M_\odot$	6.27 ± 0.27
2MASS K_{ext}	nan \pm nan	$\log M_{[\text{O III}]} / M_\odot$	7.07 ± 0.02



Emission Line Measurements

Line	$\log L$ (erg s^{-1})	FWHM (km s^{-1})	σ (km s^{-1})	EW (\AA)
H γ Narrow	40.70 ± 0.04	363 ± 63	347 ± 25	15.36 ± 0.86
Hγ Broad	40.23 ± 0.17	1325 ± 214	564 ± 68	4.79 ± 1.00
[O III] 4364	39.44 ± 0.36	298 ± 62	126 ± 25	0.85 ± 0.44
He II Narrow	39.76 ± 0.16	298 ± 62	126 ± 25	1.83 ± 0.41
He II Broad	—	—	—	—
H β Narrow	41.21 ± 0.01	363 ± 63	347 ± 25	51.63 ± 0.85
Hβ Broad	$40.43^{+1.02}_{-0.07}$	1180 ± 25	332 ± 25	8.64 ± 0.89
[O III] 5007	41.84 ± 0.01	363 ± 63	347 ± 25	225.06 ± 0.99
He I Narrow	39.64 ± 0.19	298 ± 62	126 ± 25	1.52 ± 0.47
He I Broad	40.20 ± 0.11	1181 ± 63	501 ± 25	5.46 ± 0.69
[O I] 6300	40.55 ± 0.02	298 ± 62	126 ± 25	12.66 ± 0.29
H α Narrow	41.44 ± 0.01	298 ± 62	126 ± 25	98.79 ± 0.46
Hα Broad	41.83 ± 0.01	1618 ± 66	700 ± 25	245.63 ± 1.01
[N II] 6585	40.96 ± 0.01	298 ± 62	126 ± 25	32.69 ± 0.38
[S II] 6718	40.84 ± 0.01	298 ± 62	126 ± 25	25.13 ± 0.44
[S II] 6732	40.76 ± 0.01	298 ± 62	126 ± 25	20.79 ± 0.38

Emission Summary

H α broad SNR	26.56
H β broad SNR	2.14
H γ broad SNR	1.21
AGN frac	0.75
Host frac	0.25
$\log L_{5100, \text{Host}}$	42.71
Fe II/H β	—
Fe II/[O III]	—

Quality Flags

spurious_hab/hbb	0/2
15100	0
balmer	1
balmer_snr	1
hb_width	1
balmer_width	2