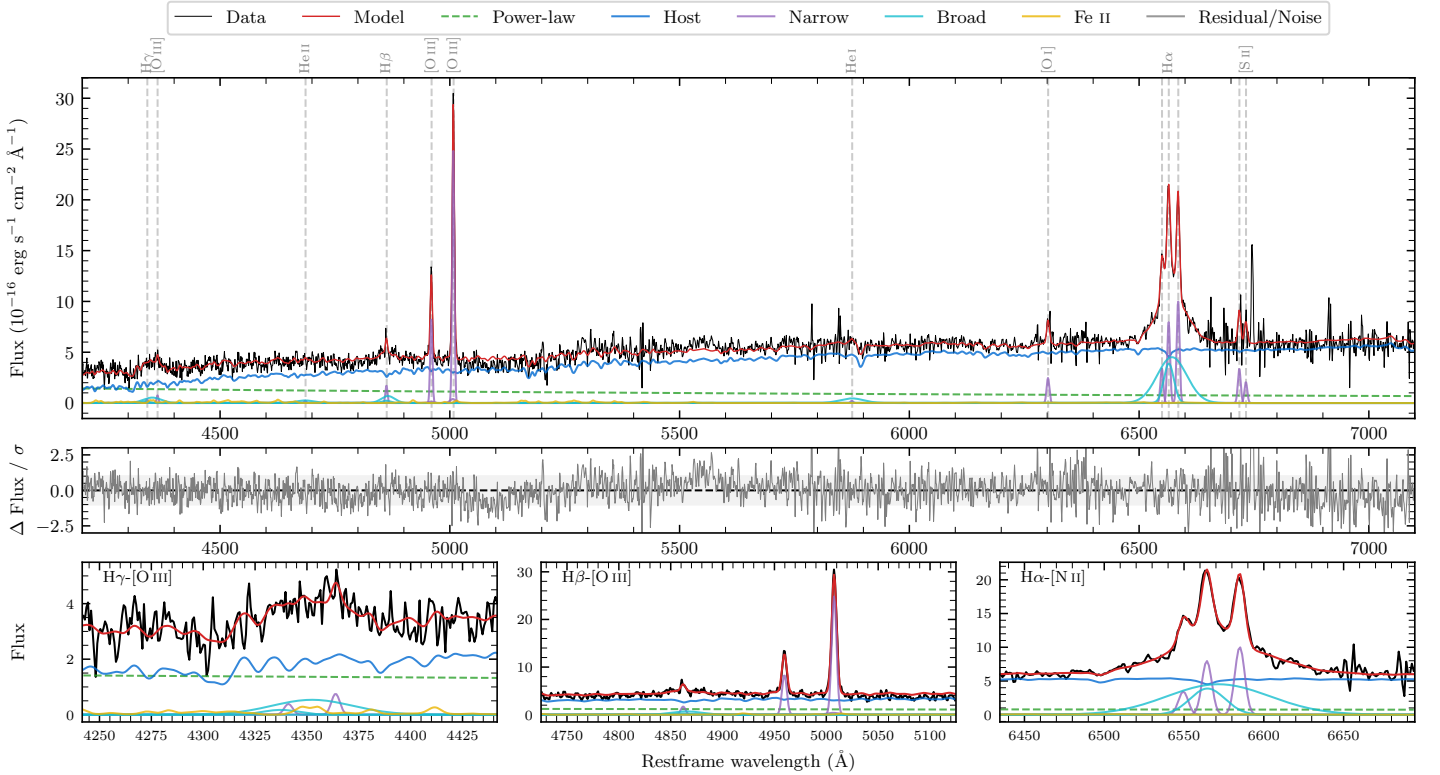
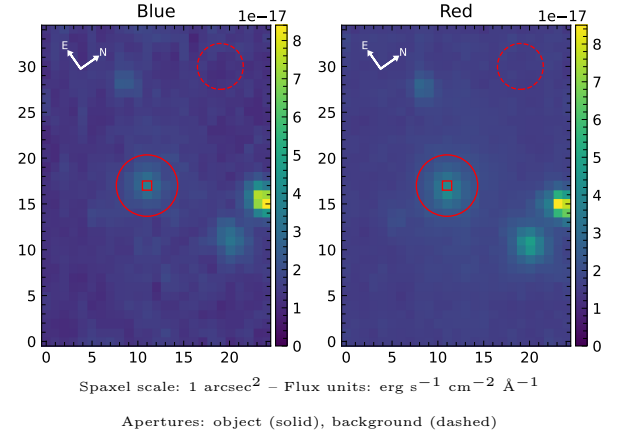


LEDA 631573

Spectrum ID	95330591_sp1	Spectrum type	Sy 1.8
Alt name	g1236333-365220	Quality flag	good
z	0.0884	AGN reference	6dFGS
RA, Dec	189.1387, -36.8722	MW $E(B - V)$	0.055
MJD	60081.44	Power law α_ν	-0.59 ± 0.56
SNR/ \AA B/R	6.6/10.7	$\log L_{5100, \text{AGN}}$	43.04 ± 0.10
Obs airmass	1.01	$\log H\beta_{\text{Br}}/[\text{O III}]$	-0.67 ± 0.09
SMSS ID	95330591	$\log M_{L5100}/M_\odot$	7.06 ± 0.09
Neighbour	10.7", 95330592	$\log M_{\text{H}\alpha}/M_\odot$	7.11 ± 0.05
SMSS $\langle r_6''_{\text{ap}} \rangle$	17.14 ± 0.22	$\log M_{\text{H}\beta}/M_\odot$	6.88 ± 0.10
2MASS K_{ext}	12.74 ± 0.12	$\log M_{[\text{O III}]} / M_\odot$	7.33 ± 0.08



Emission Line Measurements

Line	$\log L$ (erg s ⁻¹)	FWHM (km s ⁻¹)	σ (km s ⁻¹)	EW (Å)
H γ Narrow	39.64 ± 0.42	334 ± 63	154 ± 27	1.63 ± 1.51
Hγ Broad	—	—	—	—
[O III] 4364	39.91 ± 0.28	332 ± 63	140 ± 25	3.09 ± 1.10
He II Narrow	39.44 ± 0.45	332 ± 63	140 ± 25	1.16 ± 1.06
He II Broad	40.41 ± 0.24	2843 ± 71	1207 ± 29	10.71 ± 3.65
H β Narrow	40.34 ± 0.12	334 ± 63	154 ± 27	9.51 ± 1.85
Hβ Broad	40.84 ± 0.09	1932 ± 183	742 ± 47	28.87 ± 3.19
[O III] 5007	41.51 ± 0.01	334 ± 63	154 ± 27	147.70 ± 2.41
He I Narrow	39.52 ± 0.43	332 ± 63	140 ± 25	1.88 ± 1.72
He I Broad	40.80 ± 0.11	3098 ± 68	1315 ± 28	35.91 ± 5.94
[O I] 6300	40.59 ± 0.05	332 ± 63	140 ± 25	24.53 ± 2.25
H α Narrow	41.11 ± 0.03	332 ± 63	140 ± 25	87.33 ± 2.46
Hα Broad	42.00 ± 0.01	1998 ± 124	1046 ± 27	670.99 ± 8.36
[N II] 6585	41.22 ± 0.02	332 ± 63	140 ± 25	110.83 ± 2.32
[S II] 6718	40.75 ± 0.05	332 ± 63	140 ± 25	39.09 ± 3.00
[S II] 6732	40.54 ± 0.07	332 ± 63	140 ± 25	24.10 ± 3.03

Emission Summary

H α broad SNR	11.62
H β broad SNR	1.38
H γ broad SNR	0.96
AGN frac	0.25
Host frac	0.74
$\log L_{5100, \text{Host}}$	43.51
Fe II/H β	1.18
Fe II/[O III]	0.24

Quality Flags

spurious_hab/hbb	0/0
15100	1
balmer	1
balmer_snr	2
hb_width	0
balmer_width	1