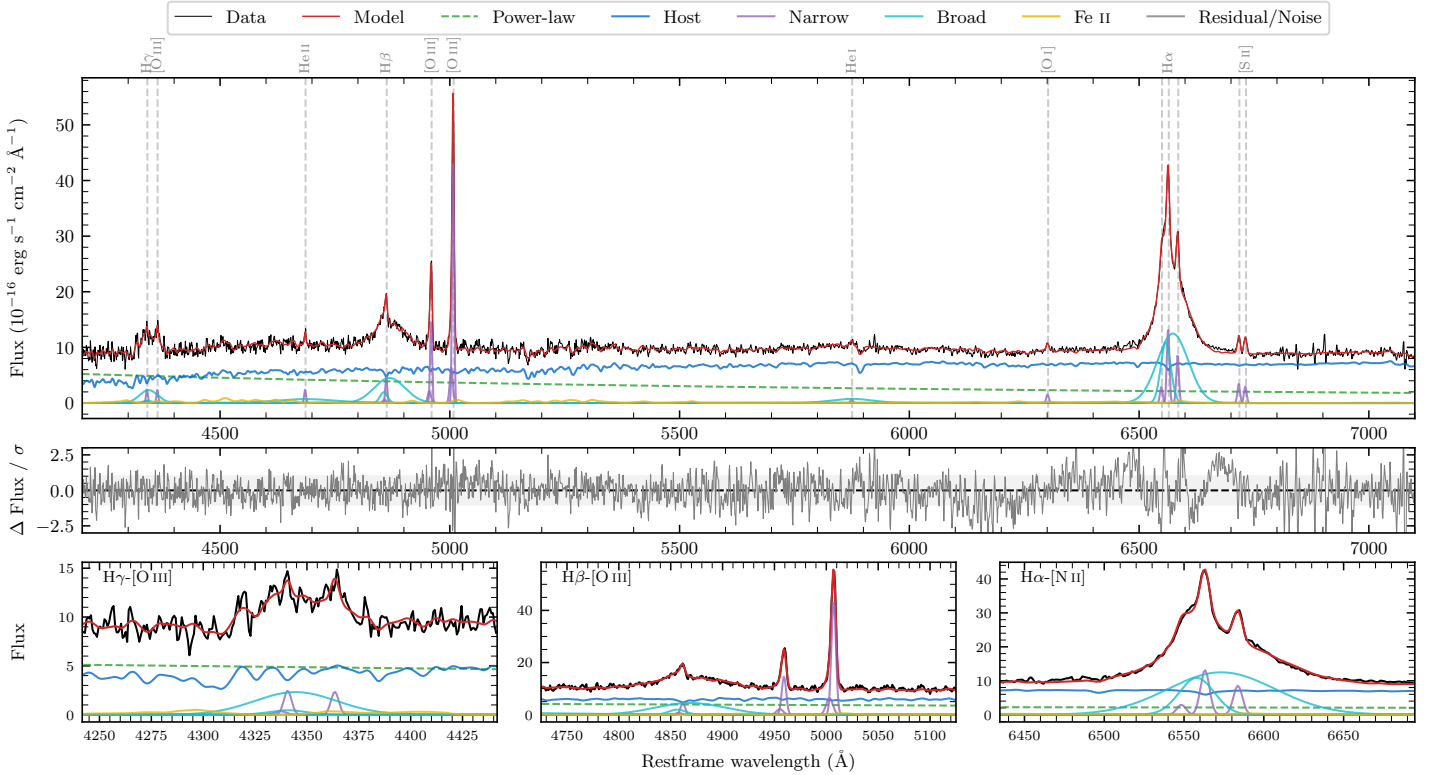
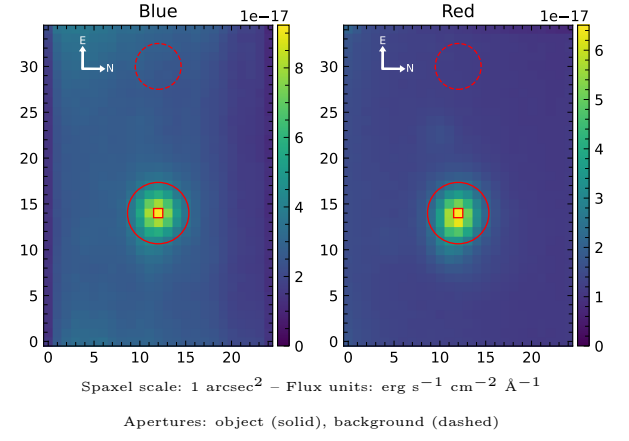


LEDA 182874

Spectrum ID	94006307_sp1	Spectrum type	Sy 1.5
Alt name	g1152059-033016	Quality flag	good
z	0.0631	AGN reference	6dFGS
RA, Dec	178.0245, -3.5044	MW $E(B - V)$	0.023
MJD	59015.48	Power law α_ν	0.01 ± 0.24
SNR/ \AA B/R	12.9/25.5	$\log L_{5100, \text{AGN}}$	43.24 ± 0.04
Obs airmass	1.63	$\log H\beta_{\text{Br}}/[\text{O III}]$	0.16 ± 0.01
SMSS ID	94006307	$\log M_{L5100}/M_\odot$	7.71 ± 0.07
Neighbour	4.2", 2154023495	$\log M_{\text{H}\alpha}/M_\odot$	7.30 ± 0.03
SMSS $\langle r_6''_{\text{ap}} \rangle$	16.27 ± 0.09	$\log M_{\text{H}\beta}/M_\odot$	7.80 ± 0.07
2MASS K_{ext}	12.75 ± 0.11	$\log M_{[\text{O III}]} / M_\odot$	7.87 ± 0.07



Emission Line Measurements

Line	$\log L$ (erg s^{-1})	FWHM (km s^{-1})	σ (km s^{-1})	EW (\AA)
H γ Narrow	40.16 ± 0.12	328 ± 63	171 ± 26	3.06 ± 0.51
Hγ Broad	41.12 ± 0.04	2967 ± 294	1129 ± 65	27.31 ± 1.43
[O III] 4364	40.05 ± 0.13	306 ± 63	129 ± 25	2.43 ± 0.43
He II Narrow	40.09 ± 0.10	306 ± 63	129 ± 25	3.07 ± 0.45
He II Broad	41.08 ± 0.06	9921 ± 187	4213 ± 79	29.71 ± 2.50
H β Narrow	40.48 ± 0.05	328 ± 63	171 ± 26	8.11 ± 0.54
Hβ Broad	41.63 ± 0.01	3680 ± 277	1680 ± 39	114.50 ± 1.89
[O III] 5007	41.47 ± 0.01	328 ± 63	171 ± 26	83.11 ± 0.62
He I Narrow	39.67 ± 0.14	306 ± 63	129 ± 25	1.82 ± 0.39
He I Broad	40.94 ± 0.04	5372 ± 154	2281 ± 65	34.01 ± 1.59
[O I] 6300	40.03 ± 0.06	306 ± 63	129 ± 25	4.75 ± 0.41
H α Narrow	40.98 ± 0.01	306 ± 63	129 ± 25	46.76 ± 0.58
Hα Broad	42.14 ± 0.01	2262 ± 74	1155 ± 25	676.82 ± 1.82
[N II] 6585	40.80 ± 0.01	306 ± 63	129 ± 25	30.62 ± 0.55
[S II] 6718	40.41 ± 0.02	306 ± 63	129 ± 25	13.07 ± 0.48
[S II] 6732	40.34 ± 0.03	306 ± 63	129 ± 25	11.31 ± 0.49

Emission Summary

H α broad SNR	29.91
H β broad SNR	8.36
H γ broad SNR	3.78
AGN frac	0.38
Host frac	0.62
$\log L_{5100, \text{Host}}$	43.45
Fe II/H β	0.27
Fe II/[O III]	0.39

Quality Flags

spurious_hab/hbb	0/0
15100	1
balmer	0
balmer_snr	0
hb_width	0
balmer_width	0