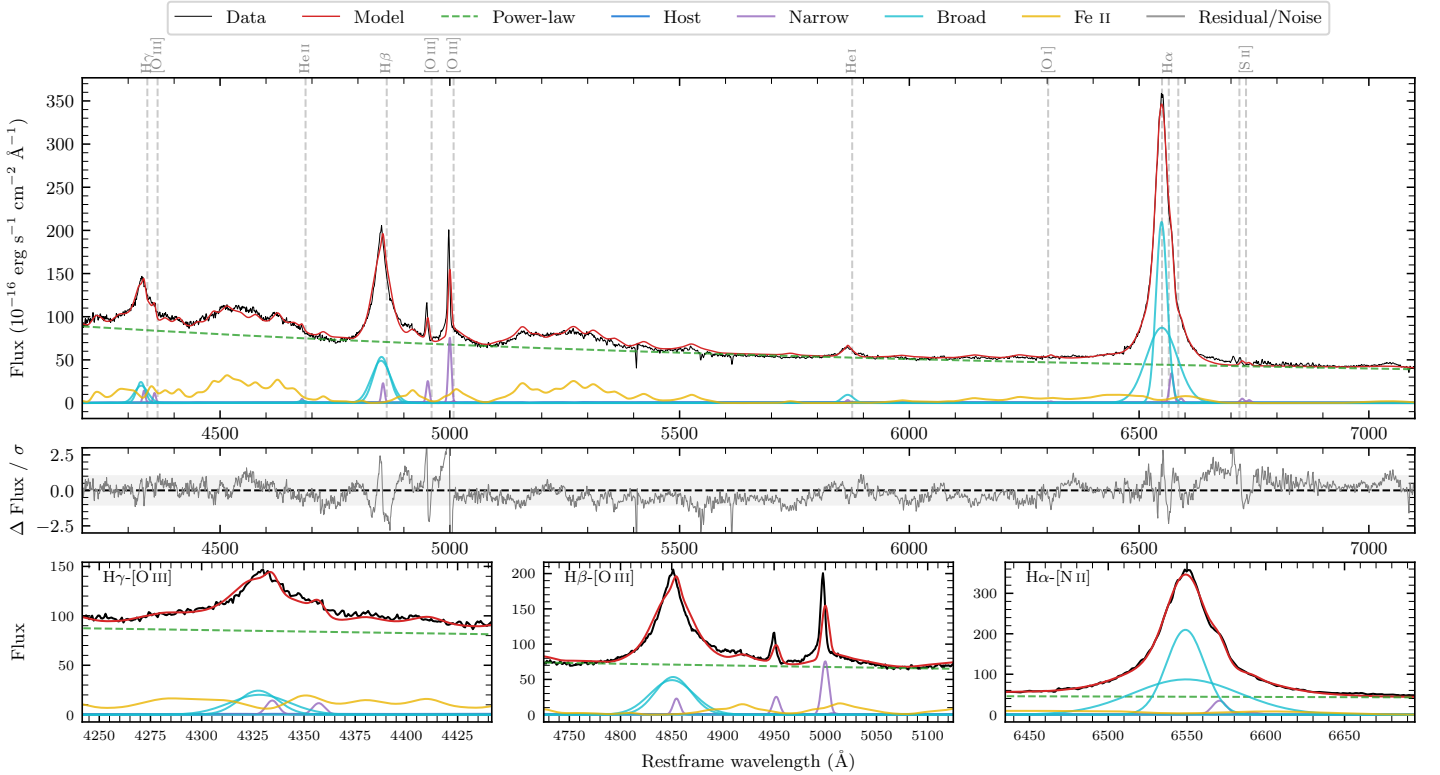
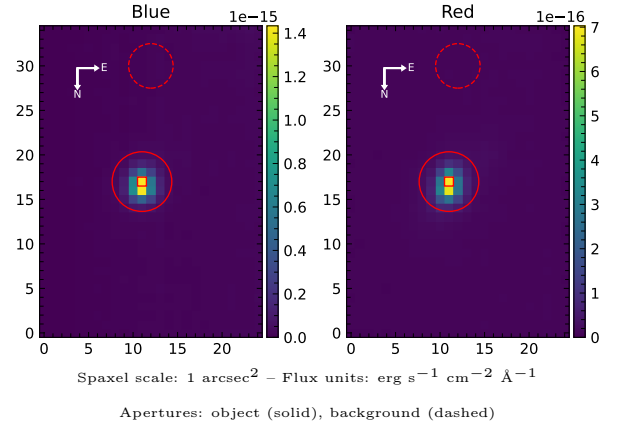


Mrk 1298

Spectrum ID	93654382_sp1	Spectrum type	Sy 1.0
Alt name	g1129167-042407	Quality flag	good
z	0.0619	AGN reference	6dFGS
RA, Dec	172.3197, -4.4020	MW $E(B - V)$	0.049
MJD	60048.5	Power law α_ν	-0.44 ± 0.05
SNR/ \AA B/R	14.1/14.0	$\log L_{5100, \text{AGN}}$	44.49 ± 0.01
Obs airmass	1.12	$\log H\beta_{\text{Br}}/[\text{O III}]$	0.86 ± 0.07
SMSS ID	93654382	$\log M_{L5100}/M_\odot$	7.95 ± 0.06
Neighbour	3.8", 2153403453	$\log M_{H\alpha}/M_\odot$	7.61 ± 0.07
SMSS $\langle r_{6'' \text{ap}} \rangle$	14.33 ± 0.07	$\log M_{H\beta}/M_\odot$	7.97 ± 0.06
2MASS K_{ext}	11.04 ± 0.03	$\log M_{[\text{O III}]} / M_\odot$	7.75 ± 0.07



Emission Line Measurements

Line	$\log L$ (erg s $^{-1}$)	FWHM (km s $^{-1}$)	σ (km s $^{-1}$)	EW (Angstroms)
H γ Narrow	41.01 ± 0.25	494 ± 129	218 ± 65	1.41 ± 0.26
Hγ Broad	42.16 ± 0.04	1944 ± 206	647 ± 155	16.46 ± 0.51
[O III] 4364	40.89 ± 0.19	490 ± 136	208 ± 54	1.12 ± 0.23
He II Narrow	40.53 ± 0.31	490 ± 136	208 ± 54	0.55 ± 0.21
He II Broad	40.80 ± 0.30	1290 ± 122	548 ± 51	0.85 ± 0.34
H β Narrow	41.25 ± 0.16	494 ± 129	218 ± 65	3.01 ± 0.31
Hβ Broad	42.67 ± 0.02	2624 ± 184	990 ± 102	73.99 ± 0.63
[O III] 5007	41.81 ± 0.07	494 ± 129	218 ± 65	10.70 ± 0.29
He I Narrow	40.49 ± 0.30	490 ± 136	208 ± 54	0.71 ± 0.23
He I Broad	41.50 ± 0.09	1534 ± 176	651 ± 74	6.14 ± 0.41
[O I] 6300	40.26 ± 0.33	490 ± 136	208 ± 54	0.46 ± 0.24
H α Narrow	41.61 ± 0.23	490 ± 136	208 ± 54	9.52 ± 0.44
Hα Broad	43.14 ± 0.01	1602 ± 105	860 ± 34	329.41 ± 0.95
[N II] 6585	40.73 ± 0.22	490 ± 136	208 ± 54	1.48 ± 0.33
[S II] 6718	40.73 ± 0.15	490 ± 136	208 ± 54	1.47 ± 0.27
[S II] 6732	40.57 ± 0.22	490 ± 136	208 ± 54	1.03 ± 0.28

Emission Summary

H α broad SNR	51.36
H β broad SNR	17.53
H γ broad SNR	7.81
AGN frac	0.99
Host frac	0.01
$\log L_{5100, \text{Host}}$	42.61
Fe II/H β	1.26
Fe II/[O III]	9.15

Quality Flags

spurious_hab/hbb	0/0
15100	0
balmer	0
balmer_snr	0
hb_width	0
balmer_width	0