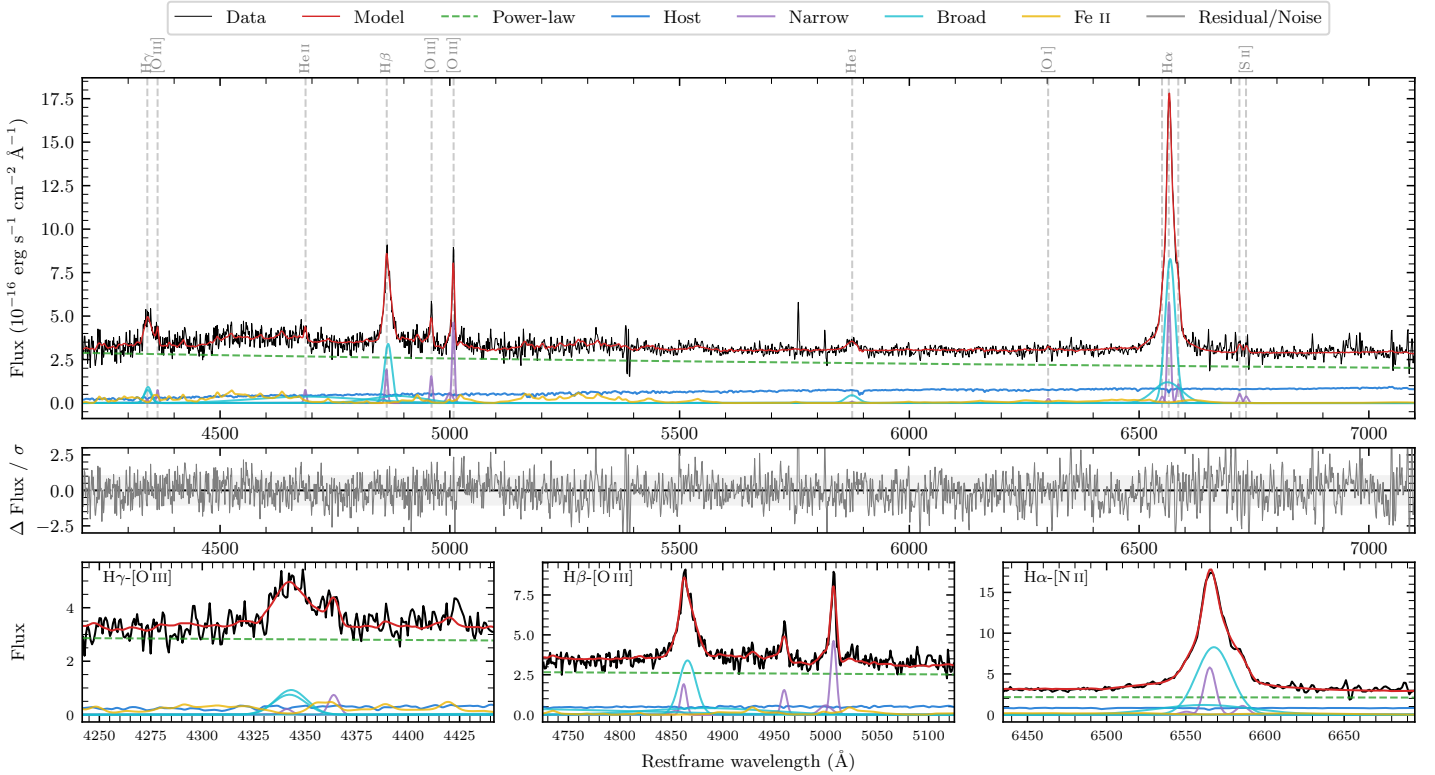
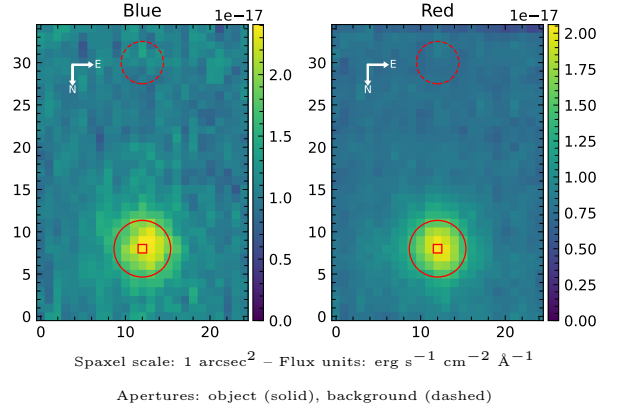


# LEDA 649044

Spectrum ID	9352426_sp1	Spectrum type	Sy 1.2
Alt name	g0142223-352541	Quality flag	good
$z$	0.0939	AGN reference	6dFGS
RA, Dec	25.5928, -35.4281	MW $E(B-V)$	0.014
MJD	60209.65	Power law $\alpha_\nu$	$-1.32 \pm 0.17$
SNR/ $\text{\AA}$ B/R	10.0/14.8	$\log L_{5100, \text{AGN}}$	$43.46 \pm 0.02$
Obs airmass	1.00	$\log H\beta_{\text{Br}}/[\text{O III}]$	$0.50 \pm 0.04$
SMSS ID	9352426	$\log M_{L5100}/M_\odot$	$6.90 \pm 0.03$
Neighbour	7.6", 1013098373	$\log M_{\text{H}\alpha}/M_\odot$	$6.65 \pm 0.04$
SMSS $\langle r_{6''}^{\text{ap}} \rangle$	$16.73 \pm 0.08$	$\log M_{\text{H}\beta}/M_\odot$	$6.83 \pm 0.04$
2MASS $K_{\text{ext}}$	$13.11 \pm 0.06$	$\log M_{[\text{O III}]} / M_\odot$	$6.74 \pm 0.04$



## Emission Line Measurements

Line	$\log L$ (erg s $^{-1}$ )	FWHM (km s $^{-1}$ )	$\sigma$ (km s $^{-1}$ )	EW (Angstrom)
H $\gamma$ Narrow	$39.61 \pm 0.43$	$424 \pm 64$	$289 \pm 34$	$0.65 \pm 0.52$
<b>H<math>\gamma</math> Broad</b>	<b><math>40.91 \pm 0.05</math></b>	<b><math>1261 \pm 75</math></b>	<b><math>463 \pm 27</math></b>	<b><math>12.52 \pm 0.70</math></b>
[O III] 4364	$40.05 \pm 0.15$	$404 \pm 63$	$170 \pm 25$	$1.80 \pm 0.38$
He II Narrow	$40.09 \pm 0.12$	$404 \pm 63$	$170 \pm 25$	$2.07 \pm 0.45$
<b>He II Broad</b>	<b><math>41.42 \pm 0.05</math></b>	<b><math>17660 \pm 62</math></b>	<b><math>7500 \pm 25</math></b>	<b><math>44.41 \pm 3.08</math></b>
H $\beta$ Narrow	$40.61 \pm 0.08$	$424 \pm 64$	$289 \pm 34$	$7.02 \pm 0.55$
<b>H<math>\beta</math> Broad</b>	<b><math>41.50 \pm 0.03</math></b>	<b><math>1298 \pm 41</math></b>	<b><math>1325 \pm 61</math></b>	<b><math>54.43 \pm 1.86</math></b>
[O III] 5007	$41.01 \pm 0.02$	$424 \pm 64$	$289 \pm 34$	$17.81 \pm 0.59$
He I Narrow	$39.13 \pm 0.45$	$404 \pm 63$	$170 \pm 25$	$0.27 \pm 0.24$
<b>He I Broad</b>	<b><math>40.58 \pm 0.06</math></b>	<b><math>1675 \pm 83</math></b>	<b><math>711 \pm 34</math></b>	<b><math>7.46 \pm 0.56</math></b>
[O I] 6300	$39.72 \pm 0.18$	$404 \pm 63$	$170 \pm 25$	$1.08 \pm 0.30$
H $\alpha$ Narrow	$41.12 \pm 0.02$	$404 \pm 63$	$170 \pm 25$	$27.86 \pm 0.39$
<b>H<math>\alpha</math> Broad</b>	<b><math>41.89 \pm 0.01</math></b>	<b><math>1279 \pm 63</math></b>	<b><math>568 \pm 25</math></b>	<b><math>163.43 \pm 1.01</math></b>
[N II] 6585	$40.39 \pm 0.05$	$404 \pm 63$	$170 \pm 25$	$5.23 \pm 0.34$
[S II] 6718	$40.09 \pm 0.08$	$404 \pm 63$	$170 \pm 25$	$2.62 \pm 0.37$
[S II] 6732	$39.95 \pm 0.12$	$404 \pm 63$	$170 \pm 25$	$1.90 \pm 0.36$

## Emission Summary

H $\alpha$ broad SNR	27.10
H $\beta$ broad SNR	10.88
H $\gamma$ broad SNR	4.92
AGN frac	0.84
Host frac	0.16
$\log L_{5100, \text{Host}}$	42.72
Fe II/H $\beta$	0.90
Fe II/[O III]	2.79

## Quality Flags

spurious_hab/hbb	0/0
15100	0
balmer	0
balmer_snr	0
hb_width	2
balmer_width	0