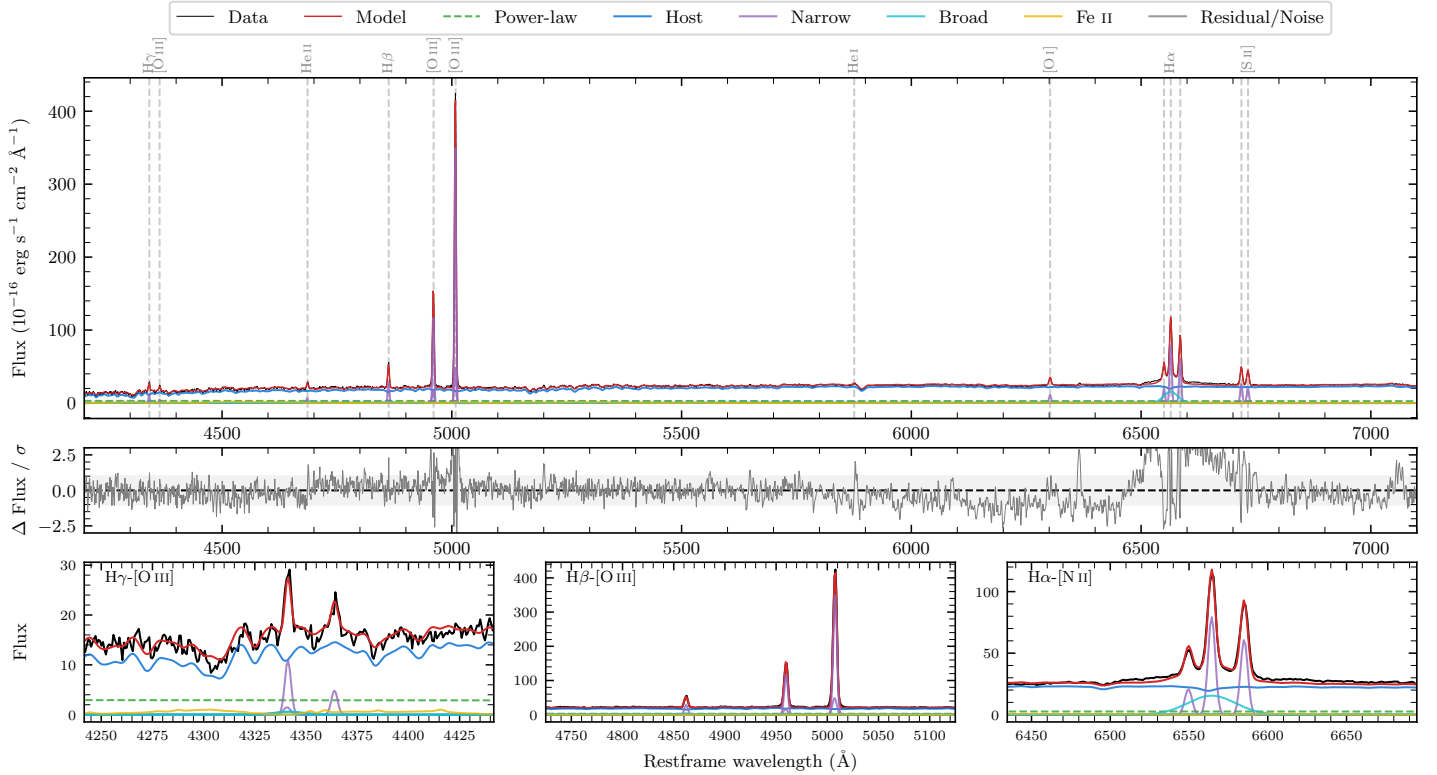
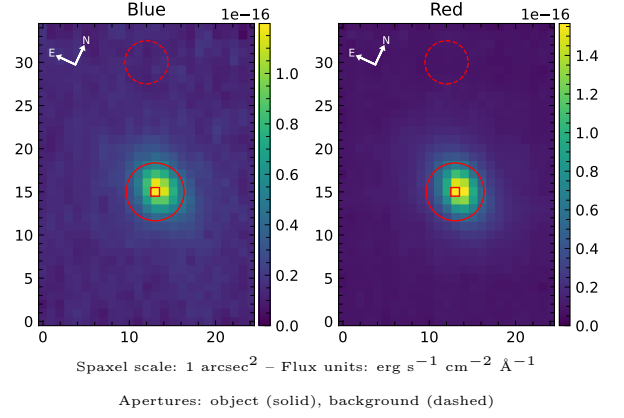


NGC 526

Spectrum ID	9343939_sp1	Spectrum type	Sy 1.8
Alt name	g0123544-350356	Quality flag	good
z	0.0189	AGN reference	6dFGS
RA, Dec	20.9766, -35.0654	MW $E(B - V)$	0.022
MJD	60166.79	Power law α_ν	-1.73 ± 0.20
SNR/ \AA B/R	13.0/26.8	$\log L_{5100, \text{AGN}}$	42.07 ± 0.15
Obs airmass	1.02	$\log H\beta_{\text{Br}}/[\text{O III}]$	-1.52 ± 0.14
SMSS ID	9343939	$\log M_{L5100}/M_\odot$	6.22 ± 0.08
Neighbour	None $< 15''$	$\log M_{\text{H}\alpha}/M_\odot$	6.16 ± 0.07
SMSS $\langle r_6''_{\text{ap}} \rangle$	14.83 ± 0.02	$\log M_{\text{H}\beta}/M_\odot$	5.93 ± 0.10
2MASS K_{ext}	10.44 ± 0.05	$\log M_{[\text{O III}]} / M_\odot$	6.75 ± 0.03



Emission Line Measurements

Line	$\log L$ (erg s ⁻¹)	FWHM (km s ⁻¹)	σ (km s ⁻¹)	EW (\AA)
H γ Narrow	39.63 ± 0.08	258 ± 62	109 ± 25	16.79 ± 1.40
Hγ Broad	—	—	—	—
[O III] 4364	39.19 ± 0.17	248 ± 63	104 ± 25	6.53 ± 1.29
He II Narrow	39.40 ± 0.10	248 ± 63	104 ± 25	10.66 ± 1.10
He II Broad	39.19 ± 0.35	1370 ± 63	582 ± 25	6.59 ± 2.47
H β Narrow	40.09 ± 0.02	258 ± 62	109 ± 25	51.00 ± 1.19
Hβ Broad	39.67 ± 0.14	1181 ± 26	442 ± 25	18.23 ± 2.34
[O III] 5007	41.18 ± 0.01	258 ± 62	109 ± 25	656.48 ± 1.87
He I Narrow	38.93 ± 0.18	248 ± 63	104 ± 25	3.88 ± 0.73
He I Broad	38.82 ± 0.44	1179 ± 63	500 ± 25	2.91 ± 1.69
[O I] 6300	39.70 ± 0.03	248 ± 63	104 ± 25	23.33 ± 0.82
H α Narrow	40.58 ± 0.01	248 ± 63	104 ± 25	178.58 ± 1.11
Hα Broad	40.73 ± 0.03	1637 ± 91	620 ± 33	242.87 ± 2.42
[N II] 6585	40.47 ± 0.02	248 ± 63	104 ± 25	137.64 ± 1.03
[S II] 6718	40.11 ± 0.01	248 ± 63	104 ± 25	60.17 ± 0.92
[S II] 6732	40.01 ± 0.02	248 ± 63	104 ± 25	48.34 ± 0.91

Emission Summary

H α broad SNR	9.82
H β broad SNR	1.59
H γ broad SNR	0.90
AGN frac	0.14
Host frac	0.86
$\log L_{5100, \text{Host}}$	42.86
Fe II/H β	5.85
Fe II/[O III]	0.16

Quality Flags

spurious_hab/hbb	0/0
15100	2
balmer	1
balmer_snr	2
hb_width	0
balmer_width	2